



**High Performance Radiant Insulation Systems**  
SERVICE | INTEGRITY | INNOVATION  
SINCE 1983

# PHILOSOPHY & APPROACH

Fi-Foil has long been committed to advancing green building technology through high-performance insulation innovations. Our reflective insulation and radiant barriers provide energy efficiency and superior thermal performance for **residential, commercial** and **industrial** buildings.

Fi-Foil opened in 1983 with the goal to create radiant insulation and barrier products that contribute to better energy efficiency and indoor comfort. This goal remains strong today and has expanded to include a commitment to sustainable design and educating customers to understand the benefits and values of reflective technologies. All these goals remain part of the mission today—along with a commitment to provide exceptional customer service and integrity at the center of all we do.

As a leading manufacturer of air and specialty barriers and reflective insulation, Fi-Foil has been specified by production and custom builders and preferred by local and national insulation contractors & distributors including TopBuild, TruTeam, Service Partners, Installed Building Products (IBP), Pinnacle Housing Corporation, Kolter Properties, Moss Construction, Convenience Products, PrimeSource Building Products, The Home Depot, Lowe's, D.R. Horton, Lennar, Pulte Homes, Neal Communities, along with energy consultants including Two Trails and SkyeTec and leading architects designing for sustainability and resilience.

Since 2017, Fi-Foil components have been specified in the National Association of Home Builders' (NAHB) showcase homes — The New American Home (TNAH) and the New American Remodel (TNAR).

## Why Fi-Foil?

Fi-Foil's innovative radiant insulation products improve building efficiency and indoor comfort. We dedicate resources to developing new solutions for improved energy sustainability. Our products meet or exceed ASTM International standards with compliance verified by reputable third parties. Products are designed to meet local, state and international building codes and can help builders qualify for Energy Star and other Department of Energy certifications.

## Fi-Foil Technology

Unlike traditional thermal insulation, Fi-Foil uses Low-e surfaces to reflect or emit heat rather than absorb it. When our Low-e layers are expanded in enclosed cavities, the result is a reduction of all three modes of heat transfer for notably better performance. Fi-foil insulation and barrier products and systems contribute to sustainable design principles through reducing these three modes of heat transfer: **conduction** (heat transfer between objects in direct contact), **convection** (the circular flow of heat through air and moisture) and **radiation** (the movement of heat in electromagnetic waves).

Fi-Foil has advanced the science of energy conservation through breakthrough improvements in insulation capabilities. Fi-Foil advantages include:

- Reflective insulation technology that reduces the flow of hot air and radiant heat to keep building spaces cooler in the summer and warmer in the winter
- Radiant barriers that stop up to 97% of heat transfer
- Hybrid systems that combine Low-e effectiveness with mass insulation performance
- Air barriers that separate adjacent conditioned and unconditioned spaces to improve energy efficiency and comfort
- Specialty barriers and accessories to meet specific facing, security, thermal and radiant insulation needs

In addition to developing, manufacturing and delivering outstanding products, Fi-Foil is a leader in customer service, field support and technical expertise. Fi-Foil offers AIA-approved continuing education, in-person seminars and distance-learning coursework to ensure architects and customers have assistance throughout the build and installation process, including online resources.

## Fi-Foil Accolades

Fi-Foil has been celebrated for its green building practices and sustainable innovations, including:

- Receiving the Professional Remodeler Top 100 Products designation for the HY-Fi® hybrid frame wall system and M-Shield paperless masonry wall insulation in 2017.
- Earning Product of the Year for our groundbreaking advancement in gas-filled panel technology, called GFP Insulation in 2011 at the Global Insulation Conference in Toronto.



- Landing a Featured Insulation Product spot on The History Channel and receiving the Cool Product Award from the Pacific Coast Builders Conference for our Silver Shield® multi-layer attic radiant barrier in 2006.



Our products help builders reach their target Home Energy Rating System (HERS) Index and qualify for green building certification programs, including the Florida Green Building Coalition (FGBC), the U.S. Green Building Council's (USGBC) Leadership in Energy and Environmental Design (LEED), Department of Energy (DOE) Zero Energy Ready Certification, Earth Craft and Green Globes.

We also proudly affiliate with other industry leaders, including the Reflective Insulation Manufacturers Association International (RIMA-I), the American Society for Testing and Materials (ASTM) International, the Insulation Contractors Association of America (ICAA), the National Insulation Contractors' Exchange (NICE), the International Association of Plumbing and Mechanical Officials (IAPMO), the Residential Energy Services Network (RESNET), The National Association of Home Builders (NAHB) and Leading Suppliers Council (LSC), The Building Officials Association of Florida (BOAF) and the Masonry Association of Florida (MAF).

## Product Categories

- **Reflective Insulation**  
Combines the effectiveness of a radiant barrier with the thermal performance of traditional insulation when used in enclosed air spaces in wall or ceiling applications.
- **Attic Radiant Barriers**  
Stops 97% of radiant heat transfer to reduce energy expenditures and costs year-round.
- **Air Barriers**  
Restricts air and water vapor movement between conditioned space and unconditioned or partially conditioned space to provide interior comfort.
- **SCIF Barriers**  
Blocks radio frequency (RF) and electromagnetic frequency (EF) interference to protect sensitive information.
- **Class A Facing**  
A cost-effective way to meet code requirements for flammability.
- **Metal Building Insulation**  
Easy-to-install system specifically for metal construction or retrofits; adds up to R-16 without additional insulation.
- **Accessories**  
Clip & Pin fastener systems, tapes and garage door kits to support the efficiency of Fi-Foil's specialty insulation products.





## HY-Fi® Hybrid Insulation System for Frame Walls and Ceilings



HY-Fi® is a multi-layered radiant reflective hybrid insulation solution for frame walls and can be combined with any mass insulation for improved thermal performance, requires a minimum 1-1/2" cavity air space to provide a minimum R7; commonly used as a wall or ceiling system with spray foam to minimize excess waste and gain flexibility for last-minute wiring changes without sacrificing performance. 10-year transferable warranty. Perforated version recommended in hot-humid climates.

### FEATURES:

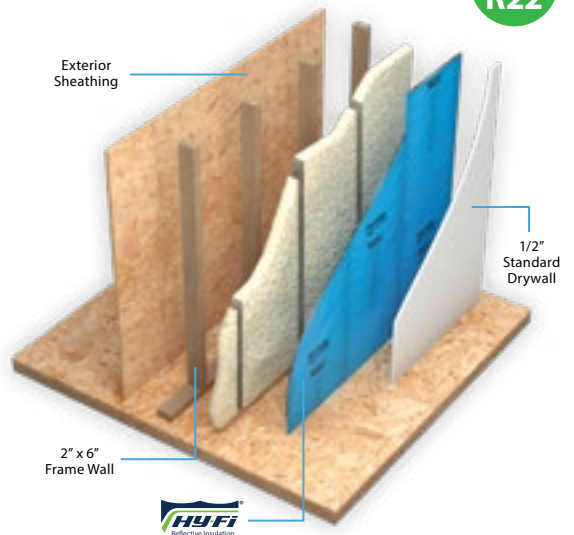
- Multi-Layer Hybrid Insulation System
- Outer Layer of Kraft Paper Coated with Polyethylene
- Inner Layer of Premium Grade Aluminum Foil
- Plus Additional Layer of Foil Reinforced with Fiberglass Scrim

### BENEFITS:

- Adds R7.0+ with minimum 1-1/2" enclosed air space<sup>1</sup>
- Turbocharges ocSPF Performance by 10%<sup>2</sup>
- Saves Labor with Less Waste Removal
- Allows for Last Minute Changes to Wiring/Plumbing

This System with

Hy-Fi & SPF R22<sup>3</sup>





## AA2 Vapor Shield™ Reflective Insulation for Masonry Walls



AA2 Vapor Shield™ is a radiant reflective insulation solution designed for masonry walls with wood furring or metal framing and can be used alone or in combination with other mass insulation. Gain cost-effective thermal performance by enhancing a minimum 3/4" enclosed cavity air space, provides R-value and potential to maximize livable area. 10-year transferable warranty. Perforated version recommended in hot-humid climates.

### FEATURES:

- Two (2) Layer Reflective Insulation
- Outer Layer of Natural Kraft Paper
- Inner Layer of Premium Grade Aluminum Foil
- Fi-Foil Expander Technology Separates layers to create two (2) reflective air spaces

### BENEFITS:

- Adds R4.1 - R5.1<sup>1</sup>
- Third-Party Verified Compliance
- Lightweight 500 SF Rolls Install Faster
- 1 Roll = 16 Sheets of Foam Board<sup>2</sup>



This System Gain R4.1<sup>1</sup>

## M-Shield® Reflective Insulation for Masonry Walls



M-Shield® is a paperless radiant reflective insulation solution designed for masonry walls with wood furring or metal framing and can be used alone or in combination with other mass insulation. Ideal for mold-sensitive projects to reduce risk of moisture accumulation and improve indoor air quality. Gain thermal performance by enhancing a minimum of 3/4" enclosed cavity space, provides R-value and potential to maximize livable area. 10-year transferable warranty. Ideal for use in hot-humid climates.

### FEATURES:

- Paperless Reflective Insulation for Mold Sensitive Projects
- Two (2) Layers of Reflective Insulation
- Outer Layer of Synthetic Polymer Facing
- Allows Vapor Transmission for Zero Mold growth

### BENEFITS:

- Adds R4.1 - R5.1<sup>1</sup>
- Improves Indoor Air Quality
- Third-Party Verified Code Compliance
- 1 Roll = 16 Sheets of Foam Board<sup>2</sup>



This System Gain R5.1<sup>1</sup>

## VR Plus Shield™ Reflective Insulation Multi-layer for Masonry Walls



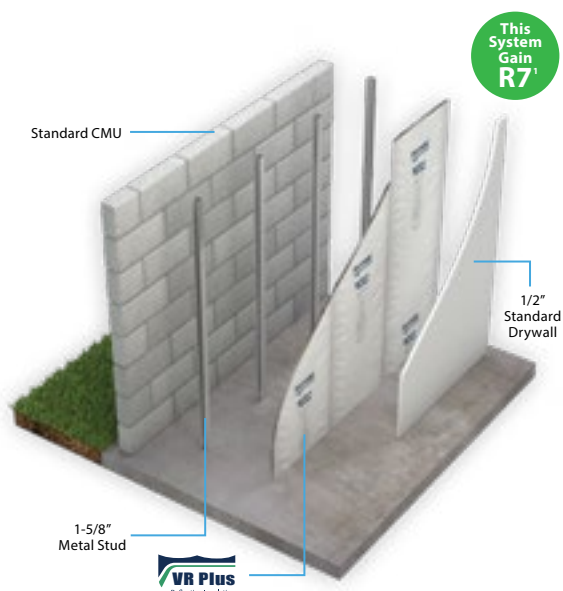
VR Plus Shield™ is a multi-layered radiant reflective insulation solution for masonry walls with wood furring or metal framing and can be used alone or in combination with other mass insulation. Gain cost effective thermal performance utilizing multiple Low-e layers to enhance enclosed cavity air space, requires a minimum 1-1/2" air space, provides significant R-value and potential to maximize livable area. 10-year transferable warranty. Perforated version recommended in hot-humid climates.

### FEATURES:

- Three (3) Layer Reflective Insulation
- Outer Layer of Natural Kraft Paper
- Inner Layers of Premium Grade Aluminum Foil
- Fi-Foil Expander Technology Separates layers to create three (3) reflective air spaces

### BENEFITS:

- Adds R7.0<sup>1</sup>
- Third-Party Verified Compliance
- Lightweight 500 SF Rolls Install Faster
- 1 Roll = 16 Sheets of Foam Board<sup>2</sup>



This System Gain R7<sup>1</sup>

<sup>1</sup>Based on 2x6 cavity using 4.0" SPF with HY-Fi vs - 5.5" of ocSPF @ 3.8/in.

## RBI Shield™ Multipurpose Reflective Bubble Insulation



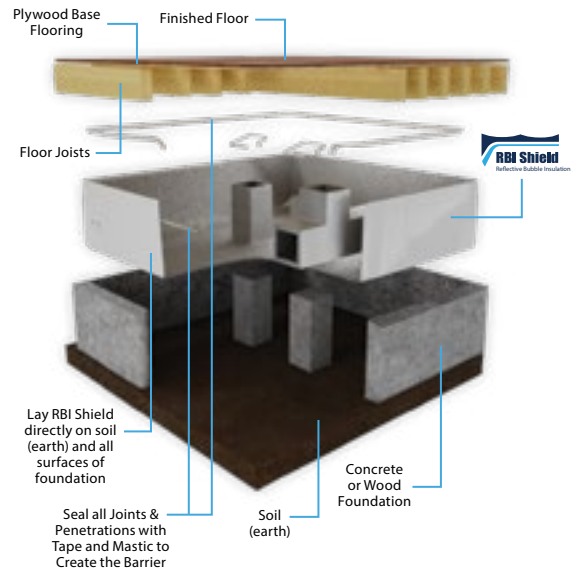
RBI Shield™ is a multi-purpose reflective bubble insulation designed for use in residential, commercial or institutional buildings. Available in single or double bubble versions. Versatile and easy to use in many areas across the building envelope including sealed crawl spaces. Keeps floors warmer in the winter and cooler in the summer and can reduce load on HVAC systems. Reduces condensation. Gain up to R16 on bottom of floor joists. 10-year warranty.

### FEATURES:

- Flexible, Multi-Use Reflective Bubble Insulation
- Single or Double Bubble Versions
- Moisture Resistant Material
- Class A Flammability Rating
- 7 Sizes Available to Fit a Wide Range of Applications

### BENEFITS:

- Adds up to R16<sup>1</sup>
- Third-Party Verified Code Compliance
- Improves Thermal Performance & Comfort Year-Round
- Reduces Condensation

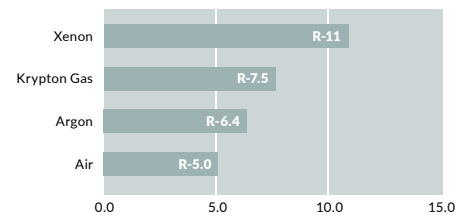


## GFP Insulation™ Gas Filled Panel Technology



GFP Insulation™ contains baffled chambers formed by honeycombed layers of Low-e metalized aluminum. Ideal for thermal and acoustic applications in transportation, aerospace and packaging industries. Can be filled with air, argon, xenon or krypton. Boasts excellent sound transmission ratings for industrial uses, resists mold and mildew growth. 10-year transferable warranty.

R-Value of 1.5" GFP Insulation Panel with Selected Gas Components



Available for Larger Scale Special Projects

### FEATURES:

- Lawrence Berkeley National Laboratory developed
- Five (5) Low-e Internal Baffled Chambers
- Baffled Chambers Fill with Air, Argon or Other Inert Gases
- Ships flat
- Moisture resistant

### BENEFITS:

- Unique, High Thermal Performance System
- Clean, Inert Gases are Safe for the Environment
- Fiber Free with Zero Mold Growth
- Adds R13 with 1 Layer, R22 with 3 Layers<sup>1</sup>

### COMPLIANCE AND APPROVALS:

- Meets LEED and other Green Building Program Requirements

## Silver Shield™ Attic Radiant Barrier - Premium Multi-Layer



Silver Shield™ is a multi-layered radiant barrier solution that can be used alone or in combination with other mass insulation. The Highest performing radiant barrier on the market, stops radiant heat to reduce attic temperatures by up to 30 degrees in summer months. Improve HVAC duct and system performance by up to 50%. Perforated to allow vapor transmission. 20-year transferable warranty.

### FEATURES:

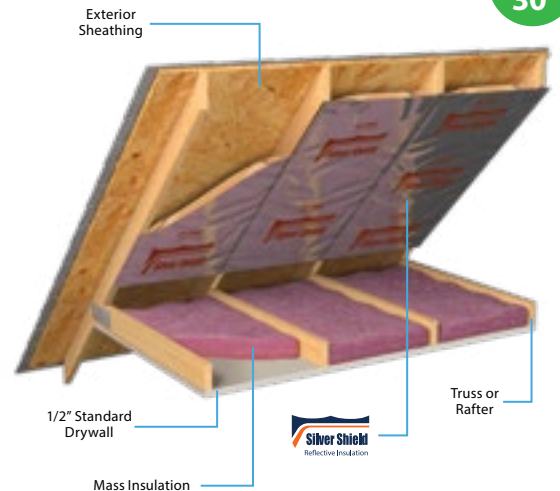
- Premium Grade Multi-Layer Radiant Barrier
- Reflects 97% of Radiant Heat at the Roof
- Third-Party Verified Code Compliance
- Outer Layer of Kraft Paper Reinforced with Aluminum

### BENEFITS:

- Proven Performance Reduces Attic Temperatures up to 30°F in the Summer
- Improves HVAC System Performance by up to 50%
- Keeps Homes Cooler in the Summer and Warmer in the Winter for greater comfort
- Highest Performing Radiant Barrier on the Market

Reduces Attic Temps

As Much As 30°



## SkyFlex VT™ Flexible Sheet Air Barrier - Vapor Transmitting



SkyFlex VT™ is a tough, flexible air barrier for residential and commercial applications, and can be used alone or in combination with other mass insulation. Vapor transmitting superior strength CLAF® fabric reinforced with Low-e surfaces that reduce radiant heat transfer and increase R-value by enhancing air of adjacent films or enclosed cavities. Adds R1.4 with one side exposed to attic and R2.0 with 3/4" enclosed air space. VT version recommended for hot-humid climate zones.

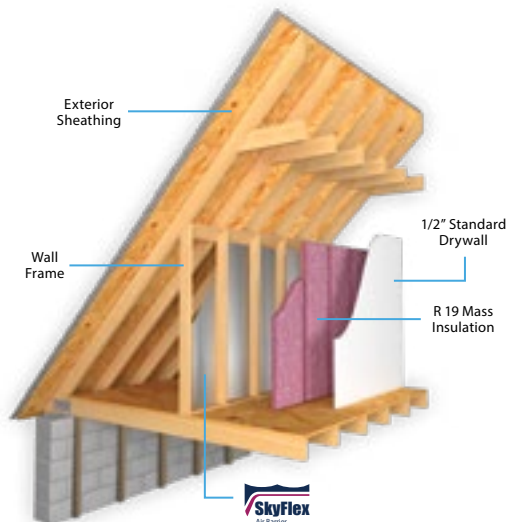
### FEATURES:

- Premium Flexible Sheet Air Barrier
- Low-e Surfaces Reduce Radiant Heat Transfer
- Tough, Puncture-Resistant Material Wont Tear
- Consists of Superior Strength CLAF® fabric reinforced with Metalized Film

### BENEFITS:

- Creates a Six (6) Sided Cavity to Improve Thermal Performance & Comfort in Living Areas at Attic Knee Walls
- Vapor Transmitting Material Allows Walls to Dry to Reduce Risk of Moisture Accumulation in Hot-Humid Climates
- 1 Roll = 16 Sheets of Rigid Board<sup>4</sup>

This System Gain Up to: **R1.4<sup>1</sup>** Attic Side  
**R2.0<sup>1</sup>** with 3/4" Enclosed Air Space



## SkyFlex™ Flexible Sheet Air Barrier - Class I Vapor Retarder



SkyFlex™ is a tough, flexible air barrier for residential and commercial applications, and can be used alone or in combination with other mass insulation. Improve thermal performance year-round. Low-e reflective surfaces reduce radiant heat transfer and increase R-value by enhancing air of adjacent films or enclosed cavities. Adds up to R1.7 with one side exposed to attic and up to R2.9 with 3/4" enclosed air space.

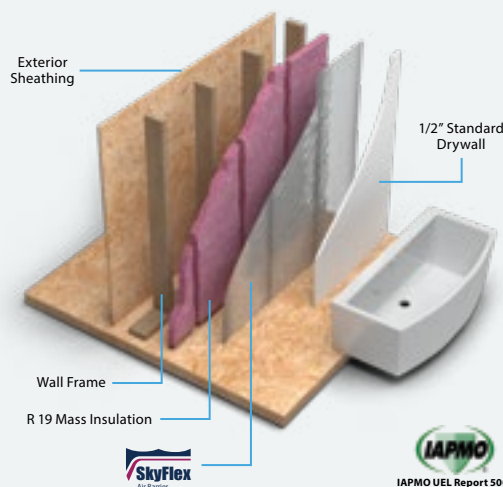
### FEATURES:

- Premium Flexible Sheet Air Barrier
- Low-e Surfaces Reduce Radiant Heat Transfer
- Tough, Puncture-Resistant Material Wont Tear
- Flexible sheet for easy handling

### BENEFITS:

- Improves Thermal Performance of Building Envelope
- Significantly Improves Comfort in Living Areas with Exposed Walls
- Solid Material is a Class I Vapor Retarder
- 1 Roll = 16 Sheets of Rigid Board<sup>4</sup>
- 1 Pallet Covers as much as 2 Pallets of Rigid Board

This System Gain Up to: **R1.7<sup>1</sup>** Attic Side  
**R2.9<sup>1</sup>** with 3/4" Enclosed Air Space



## Radiant Shield™ Premium Sheet Two-sided Radiant Barrier



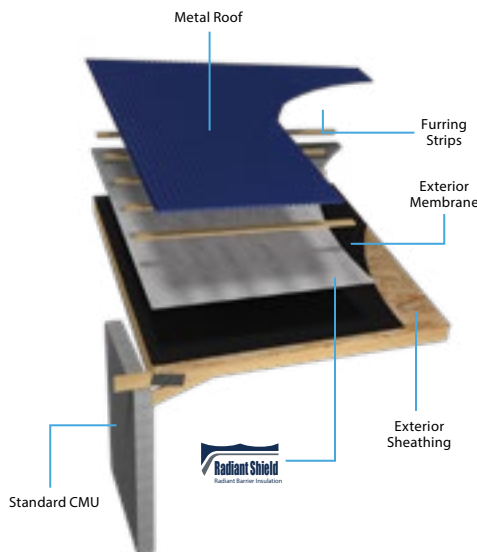
Radiant Shield is a radiant barrier that can be used alone or in combination with other mass insulation. Stop heat at the roof and improve performance with less heat transfer to HVAC ductwork and improve comfort in attics and indoor envelopes. Radiant Shield stops up to 95% of radiant heat. Perforated to allow for vapor transmission.

### FEATURES:

- Premium Grade Radiant Barrier
- Reflects 95% of Radiant Heat at the Roof
- Metalized Aluminum Deposited on Each Side of a Layer of Woven Polyethylene
- Perforated to Allow Vapor Transmission

### BENEFITS:

- Reduces Attic Temperatures in the Summer
- Improves Performance of HVAC Ducts and System Efficiency
- Effective Performance as a Vented System Under Metal Roofs
- Reduces Heat Loss in the Winter



<sup>1</sup>R-values vary based on direction of heat flow, amount of enclosed air space and r-value of other insulation used in combination, see our specification sheets at Fifoil.com for more specific information. <sup>4</sup>Based on standard 4' x 8' rigid board product.



## RF Shield™ SCIF Barrier for Sensitive Compartmented Information Facilities



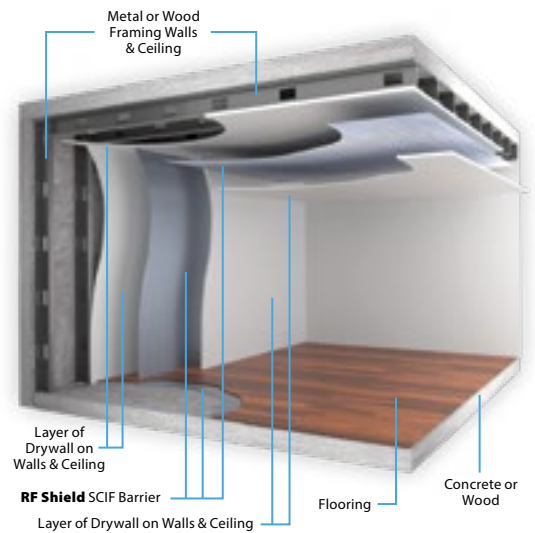
RF Shield™ is a multi-layered security shielding solution to block electromagnetic (EM) and radio frequency (RF) interference in order to protect highly sensitive information. Reduces sound attenuation and meets or exceeds shielding effectiveness requirements of the NSA.

### FEATURES:

- Multi-Layered Security Shielding
- Solid or Perforated Versions
- Two (2) Outer Layers of 99% Pure Aluminum Foil
- Inner Layer of Fiberglass Reinforcing & Kraft Paper

### BENEFITS:

- Protects Highly Sensitive Information
- Blocks Electromagnetic (EM) Interference
- Blocks Radio Frequency (RF) Interference
- Third-Party Verified for Shielding Effectiveness by NSA Approved TEMPST Facility, IEEE 299



## FSK Shield™ Class A Insulation-Facing / Vapor Retarder



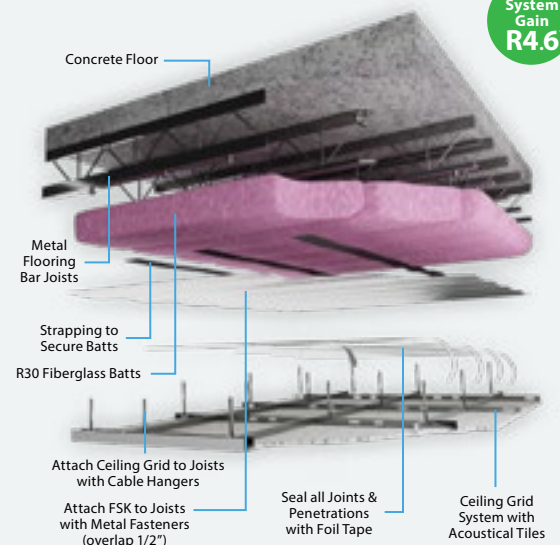
FSK Shield™ is a cost-effective radiant insulation solution with a single-sided Low-e foil facing reinforced with fiberglass scrim bonded to natural kraft paper. FSK can be used alone or in combination with other mass insulation and is commonly used as a Class A facing for unfaced batts or plenum ceiling applications. Adds up to R4.6 to exposed roof or ceiling systems. An easy, economical alternative to expensive foil-faced batts.

### FEATURES:

- Class A Insulation Facing
- Ideal for Unfaced Batt
- Can Be Used as Radiant Barrier for Attics, Roofs and Walls
- Low-e Aluminum Foil Bonded to Natural Kraft Paper

### BENEFITS:

- Adds R4.6 to an Exposed Roof or Ceiling Applications<sup>1</sup>
- Cost Effective Method to Meet Code Requirements for Class A Flammability
- Replaces Expensive Foil-Faced Batt
- Increases Thermal Resistance for Better Performance



## RetroShield System® Metal Building Insulation for Retrofit & New Construction



RetroShield System® is an advanced high performance reflective double bubble insulation system that can be used alone or in combination with other mass insulation in new and existing metal buildings.

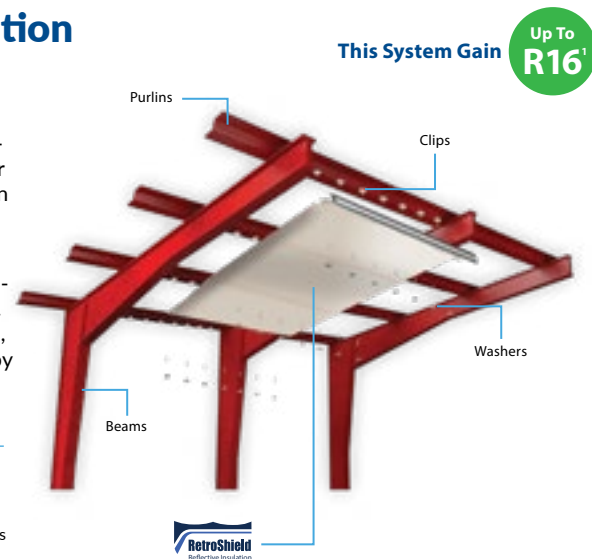
Featuring a patented Clip & Pin technology to allow for quick and easy installation without glue or support cables. Gain thermal performance in commercial, agricultural or institutional applications by adding up to R16. 10-year warranty.

### FEATURES:

- Flexible, High Performance Reflective Double Bubble Insulation
- Reduces Thermal Bridging for Continuous Insulation
- Patented Clip & Pin Components for a Strong Mechanical Connection
- Variety of Clip & Pin Components & Facing Color Options

### BENEFITS:

- Adds R16 without Additional Insulation<sup>1</sup>
- Improves Thermal Performance & Comfort and Saves Energy to Reduce Operating Costs
- White/Reflective System Doubles as a Beautiful Ceiling and Creates a Brighter Workspace





# RESIDENTIAL APPLICATIONS

## REFLECTIVE INSULATION & RADIANT BARRIERS



### Attic

- 1 **SkyFlex VT™ Flexible Sheet Air Barrier - Vapor Transmitting** - Attic Knee Wall shown with SkyFlex VT™ and R19 fiberglass batt installed in bonus room above the garage.
- 2 **Silver Shield™ Attic Radiant Barrier** - Attic Radiant Barrier shown with Silver Shield™ installed directly on bottom of top cord of roof trusses.

### 2nd Floor

- 3 **HY-Fi® Hybrid Frame Wall & Ceiling Reflective Insulation** - Hybrid Frame Wall System shown with HY-Fi® installed over 2" of closed cell spray foam in 2x4 framing, works with minimum 1-1/2" enclosed cavity air space to add R7 to the assembly.
- 4 **SkyFlex™ Flexible Sheet Air Barrier - Class I Vapor Retarder** - Bathroom shown with SkyFlex™ installed behind shower tile.

### 1st Floor

- 5 **VR Plus Shield™ Masonry Wall Reflective Insulation** - Walls shown with VR Plus Shield™ installed on masonry block with 1-1/2" furring.

- 6 **HY-Fi® Hybrid Frame Wall & Ceiling Reflective Insulation** - Hybrid Frame Ceiling shown with HY-Fi® installed over R-19 fiberglass batt on the face of ceiling beam cavities, works with minimum 1-1/2" furring enclosed cavity air space to add R7 to the assembly.

### Basement Floor

- 7 **VR Plus Shield™ Masonry Wall Reflective Insulation** - Basement wall assembly shown with 1/2" foam board (R3) installed on masonry block combined with VR Plus Shield™ attached to 1-1/2" (R7).
- 8 **RBI Shield™ Multi-Purpose Reflective Bubble Insulation** - Sealed Crawl space shown with RBI Shield™ installed on walls, reflective side up, joints and penetrations sealed with tape and mastic.

# COMMERCIAL & METAL BUILDING APPLICATIONS

## REFLECTIVE INSULATION & RADIANT BARRIERS

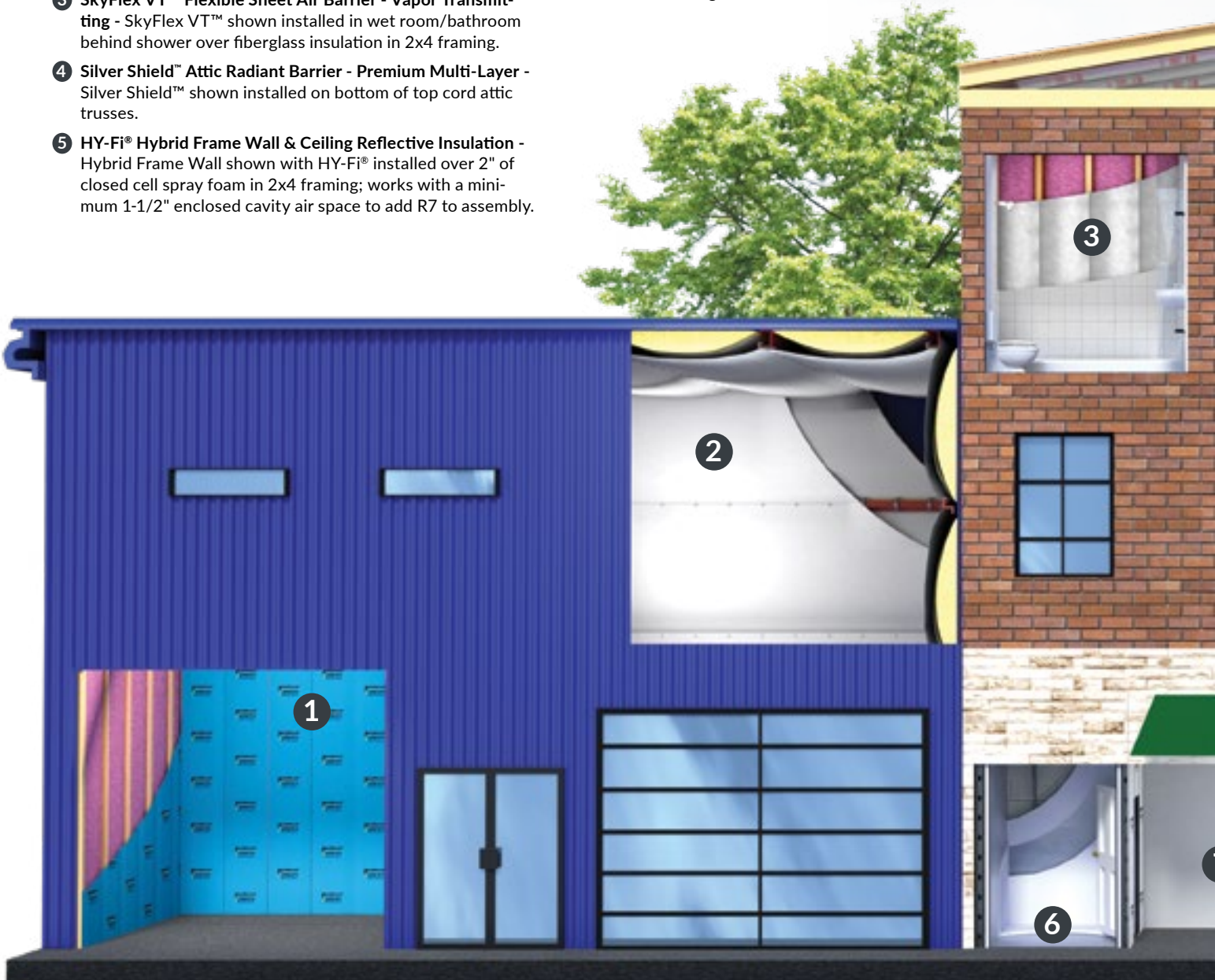
### Metal Building

- 1 **HY-Fi® Hybrid Frame Wall & Ceiling Reflective Insulation** - Hybrid Frame Wall shown in metal building office with HY-Fi® installed over 2" of fiberglass in 2x4 framing; alternative is HY-Fi® installed over 2" of closed cell spray foam; works with a minimum 1-1/2" enclosed cavity air space to add R7 to the assembly.
- 2 **RetroShield System® Metal Building Insulation for Retrofit & New Construction** - Metal Building Insulation shown as retrofit with RetroShield System® installed over existing insulation on roof and wall purlins, adds R16.

### Mixed Use Residential/Commercial Building

- 3 **SkyFlex VT™ Flexible Sheet Air Barrier - Vapor Transmitting** - SkyFlex VT™ shown installed in wet room/bathroom behind shower over fiberglass insulation in 2x4 framing.
- 4 **Silver Shield™ Attic Radiant Barrier - Premium Multi-Layer** - Silver Shield™ shown installed on bottom of top cord attic trusses.
- 5 **HY-Fi® Hybrid Frame Wall & Ceiling Reflective Insulation** - Hybrid Frame Wall shown with HY-Fi® installed over 2" of closed cell spray foam in 2x4 framing; works with a minimum 1-1/2" enclosed cavity air space to add R7 to assembly.

- 6 **RF Shield™ SCIF Barrier for Sensitive Compartmented Information Facilities** - SCIF system shown with RF Shield™ installed between two layers of drywall on the walls, ceiling and floor.
- 7 **VR Plus Shield™ Reflective Insulation- Multi-layer for Masonry Walls** - Walls shown with VR Plus Shield™ installed on masonry block with 1-1/2" furring, adds R7.
- 8 **M-Shield® Reflective Insulation for Masonry Wall - Paperless for Mold Sensitive Projects** - Walls shown with M-Shield® installed on masonry block with 1-5/8" metal framing, adds R5.
- 9 **FSK Shield™ Class A Facing - Vapor Retarder - Plenum Ceiling** system shown with FSK Shield™ attached to floor joists under secured fiberglass batt.







Products <sup>1</sup>	SPECIFICATIONS								STRUCTURES		APPLICATIONS						
	Widths	Roll Size	Versions Available in All Widths	Enclosed Cavity Air Space	R-Value <sup>3</sup> Heat Flow Horizontal	R-Value <sup>3</sup> Heat Flow Down	R-Value <sup>3</sup> Heat Flow Up	Compliance <sup>4</sup> Approvals	Masonry	Frame	Walls	Attics, Ceilings, Plenums, Roofs	Floors, Crawl Spaces, Basements	Garages, Workshops, Barns	Metal or Tile Roofs	Metal Buildings	
<b>REFLECTIVE INSULATION</b>																	
<b>VR Plus Shield™</b>	16" o.c.	500 SF	Perforated Semi-Permeable <sup>2</sup>	1-1/2", 1-5/8"	R7.0 - R7.1	—	—	ASTM C1224	X		X		X				
	24" o.c.	500 SF	Solid Vapor Retarder														
<b>M-Shield®</b> Paperless	16" o.c.	500 SF	Perforated Semi-Permeable <sup>2</sup>	3/4", 7/8", 1-1/2"	R4.1 - R5.1	—	—	ASTM C1224	X		X						
	24" o.c.	500 SF															
<b>AA2 Vapor Shield™</b>	16" o.c.	500 SF	Perforated Semi-Permeable <sup>2</sup>	3/4", 7/8", 1-1/2"	R4.1 - R5.1	—	—	ASTM C1224	X		X						
	24" o.c.	500 SF	Solid Vapor Retarder														
<b>HY-Fi®</b>	16" o.c.	500 SF	Perforated Semi-Permeable <sup>2</sup>	1-1/2" - 2"	R7.0 - R7.1	≥R7.0 <sup>5</sup>	—	ASTM C1224		X	X	X		X		X	
	24" o.c.	500 SF	Solid Vapor Retarder														
<b>RBI Shield™</b> Multi-Purpose Bubble	16"	166 SF	Double Bubble	1"	R4.1 - R5.5	R6.5 - R10	R3.4 - R4.1	ASTM C1224	X	X		X	X	X		X	
	24"	250 SF	Reflective/Reflective	6" - 8"	R4.4 - R5.4	R12 - R16	R4.0 - R4.7										
	48"	500 SF	Reflective/Poly White or Black														
	54"	563 SF															
	66"	688 SF															
	72"	750 SF															
<b>GFP Insulation™</b> Gas Filled Panels	Contact Us		Reflective/Reflective 1-3 Layers with an Inert Gas	N/A	R16 - R22	R13 - R22	—	ASTM C1224	X	X	X	X					
	<b>ATTIC RADIANT BARRIERS</b>																
<b>Silver Shield™</b>	16"	500 SF	Multi-Layer	N/A	—	—	—	ASTM C1313	X	X		X		X			
	24"	500 SF	Perforated Semi-Permeable <sup>2</sup>														
	30"	250 SF															
<b>Radiant Shield™</b>	25.5"	500 SF	Premium Single Sheet	N/A	—	—	—	ASTM C1313	X	X		X		X	X		
	48"	500 SF	Perforated Semi-Permeable <sup>2</sup>														
	51"	500 SF															
<b>AIR BARRIERS</b>																	
<b>SkyFlex VT™</b>	48"	500 SF	Flexible Sheet CLAF® Vapor Transmitting	Exposed Attic, 3/4", 1-1/2"	R14 - R2.0	—	—	ASTM E2178	X	X	X	X	X	X	X	X	
<b>SkyFlex™</b>	48"	500 SF	Flexible Sheet Solid Vapor Retarder	Exposed Attic, 3/4", 1-1/2"	R1.7 - R2.9	—	—	ASTM E2178 IAPMO UEL-5003	X	X	X	X	X	X	X		
	51"	500 SF															
<b>SCIF BARRIERS</b>																	
<b>RF Shield™</b>	51"	500 SF	Flexible Sheet Electromagnetic/Frequency Blocking Perforated Semi-Permeable Solid Vapor Retarder	N/A	—	—	—	ASTM 3057 ASTM 4935 IEEE 299	X	X	X	X	X	X	X		X
<b>SPECIALTY BARRIERS</b>																	
<b>FSK Shield™</b> Vapor Retarder	54"	1000 SF	Flexible Sheet Class A Facing	Air Film	R1.7	R4.55	R1.32	ASTM E84	X	X	X	X				X	
<b>METAL BUILDINGS</b>																	
<b>RetroShield System®</b> Advanced System Beams Purlins Joists  Clips & Pin Fastener System Can be Purchased Separately	48"	500 SF	Draped over Purlins - Reflective/Reflective with 1" Air Gap	1"	R5.5	R10	R4.1	ASTM 1224			X			X		X	
	66"	688 SF	Draped over Purlins - Reflective/Poly White or Black with 1" Air Gap	1"	R4.1	R6.5	R3.4	ASTM 1224			X			X		X	
	72"	750 SF	Attached to Bottom of Purlins - Reflective/Reflective with 6" - 8" Enclosed Air Space	6 - 8"	R5.4	R16	R4.7	ASTM 1224			X			X		X	
	96"	1000 SF	Attached to Bottom of Purlins - Reflective/Poly White or Black with 6" - 8" Enclosed Air Space	6 - 8"	R4.4	R12	R4.0	ASTM 1224			X			X		X	

<sup>1</sup> Fi-Foil Products are designed to be used alone or combined with other insulation as part of a system

<sup>2</sup> Semi-permeable versions of reflective insulation are highly recommended in hot-humid climates

<sup>3</sup> R-Values vary based on amount of enclosed air space, air films, r-value of other insulation used in combination and the direction of heat flow; contact us for an engineered solution

<sup>4</sup> For additional compliance information, see specification sheets available on product pages at Fifiol.com

<sup>5</sup> R-value calculations have been completed for a range of insulation combinations; contact us for an engineered solution



612 BRIDGERS AVENUE WEST, PO BOX 800, AUBURNDALE, FL 33823  
1.800.448.3401 • FI-FOIL.COM

© 2020 Fi-Foil Company, Inc. All Rights Reserved.