



The Line Between Cozy and Cold is **RED**



LGRED°

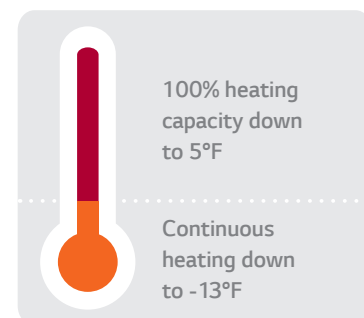
Powerful Heat Technology

RELIABLE TO EXTREME DEGREES

Stay comfortable all year long with industry-leading LGRED° heat technology.

WHAT IS LGRED° HEAT TECHNOLOGY?

Products featuring LGRED° heat (Reliable to Extreme Degrees) boast superior performance under challenging conditions. Be toasty warm even in the coldest winter months, when traditional units are unable to keep up with demand. Expect 100% heating capacity down to 5°F and continuous heating, even when it's -13°F outside. For more information, visit lgredheat.com.



WHAT ARE ADVANTAGES OF LG SYSTEMS WITH LGRED° HEAT?

LG Systems with LGRED° offer all of the traditional benefits of LG duct-free and inverter technology while delivering industry-leading heating performance.

Room-by-room Control

With a controller for each indoor unit, LG systems offer precise temperature settings in each zone (room) while maximizing energy savings by heating or cooling only the zones in use.

Flexibility

Available in a full range of capacities and indoor unit styles, including several types of ducted units and the award-winning LG Art Cool™ Gallery.

Energy Efficient

Many LG systems with LGRED° are ENERGY STAR® certified.

Quiet

LG indoor units are among the quietest in the industry, operating at decibel levels similar to the sound of rustling leaves.

All-season Use

All LG systems with LGRED° are heat pumps, meaning they have both cooling and heating capabilities.

Wi-Fi Compatible

Most systems with LGRED° are Wi-Fi compatible giving homeowners the freedom to control their system from anywhere using the LG SmartThinQ™ app alongside their other LG Wi-Fi enabled products.



ENERGY EFFICIENT



Powerful Heating Performance from LG

100 percent heating capacity down to 5°F.
Continuous heating down to -13°F.



SYSTEMS WITH LGRED° HEAT TECHNOLOGY

SINGLE ZONE SOLUTIONS



Art Cool™ Premier is a single-zone solution that combines outstanding heating and cooling performance with elegant styling that blends beautifully with any décor.

MULTI ZONE SOLUTIONS



Multi F with LGRED° systems use a single inverter-driven outdoor unit to efficiently provide heating and cooling to as many as four rooms.

Rated Heating Capacity: 22,000 to 28,600 Btu/h



Multi F MAX with LGRED° provides powerful and personalized performance for larger-scale heating/cooling needs or a whole home, up to six rooms.

Rated Heating Capacity: 41,000 to 45,000 Btu/h

Indoor Units for use with Multi F and Multi F MAX outdoor units:

Wall-Mounted



Art Cool Gallery



High Efficiency



Art Cool Mirror

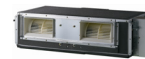
Ceiling Mounted and Ducted



Ceiling Cassette



Low Static



High Static



Vertical AHU

BRINGING YOU SAVINGS FROM DAY ONE, LGRED° PRODUCTS ARE THE PERFECT SINGLE ROOM OR WHOLE-HOME SOLUTION.

Installation

- Just a three-inch hole is needed to connect the outdoor unit and indoor air handlers, so installation is simpler than many other heating and cooling options.
- With no costly ductwork, LGRED° systems can be installed where conventional ducted systems can't, ideal for older homes, additions or problem rooms.
- Have ducts already? No problem! LG also has a several ducted styles of indoor units to choose from in a full range of capacities.

Rebates

- Homeowners may even qualify for federal, local, and utility rebates which can substantially offset the cost of installation. Check rebates.lghvac.com to see all applicable rebates and incentives!



SEER: Your Guide to Cool Savings

An acronym for Seasonal Energy Efficiency Ratio, SEER is the industry-wide rating for energy consumption. The higher the number, the more efficiently a product will produce cool air, while conserving our natural resources. Your contractor will be happy to explain SEER numbers in greater detail, and help determine which LG duct-free split system is right for you.

HSPF: For Cost-Saving Coziness

Heating Seasonal Performance Factor, or HSPF, represents total heating output relative to electricity used. Like SEER, the higher the HSPF rating, the more efficiently a product will warm air. In climates where heating is necessary in winter months as well as cooling in the summer, ask your contractor to suggest the ideal LG duct-free split system.



ENERGY STAR® is a joint program of the U.S. Environmental Protection Agency (EPA) and the U.S. Department of Energy (DOE) created to promote energy-efficient products and practices. The ENERGY STAR® logo helps homeowners identify which products meet energy efficiency performance levels set by U.S. EPA and U.S. DOE.



LG Electronics USA, Inc.
Air Conditioning Technologies
4300 North Point Parkway, Alpharetta, GA 30022

