

Eaton's Wiring Devices
Wi-Fi smart devices



Wi-Fi smart devices...
a simple smart home

Set up quickly and easily
with the Amazon Alexa App

EATON

Powering Business Worldwide

Eaton's Wi-Fi smart devices

Watch your smart home get **smarter** and **smarter** as you save energy, feel more comfortable and secure, and see every room become more livable.





Wi-Fi smart devices

Eaton's broad selection of Wi-Fi smart devices offer reliability with unbeatable ease of setup. Every device sets up quickly and easily with the free Amazon Alexa App—no hubs or controllers are necessary. You can even add voice-control using any Alexa built-in device.



Frustration-Free Setup

Just turn on your device and set up is simple using the Amazon Alexa App.



Easy installation

LED indicators confirm proper installation and eliminate callbacks.



No hub required

Quickly and easily set up a wide variety of smart-home lighting-control devices without hubs or controllers.



Personalization

Schedule lights to go on and off—and even dim—to fit a daily routine.



Voice control

Just ask Alexa to turn your lights ON/OFF or brighten/dim lights when used with any Alexa built-in device.



Up-to-date

Ensure you have the latest features and peak device performance through over-the-air updates.

Simplify your life with voice control and control your lights from anywhere.

Amazon, Alexa and all related logos are trademarks of Amazon.com, Inc. or its affiliates.

3 Easy steps to set up your Wi-Fi smart device

1 Install your Wi-Fi smart device

2 Download the Amazon Alexa App
via the App store



3 Add your device to Amazon Alexa App



Wi-Fi smart voice dimmer

Voice control built-in



WFAVD30

Single pole, 3-way, and multi-location



Just ask Alexa

Just ask Alexa to turn your lights ON/OFF, set timers, make announcements and brighten/dim lights with Alexa built-in



Privacy mode (mic off)

Simply mute the microphone with the push of a button



Wi-Fi smart voice dimmer

Features

- Set up and control dimmer using the Amazon Alexa App or by voice commands with Alexa built-in
- No hub required
- Compatible with regular 3-way switch for 3-way control
- LED indicator bar indicates selected light level
- When the lights are OFF, press and hold the ON/OFF button for 2 seconds. The device will then instantly turn ON at its maximum brightness level
- Adjust how long lights stay on to allow for a safe, convenient exit
- Preset whether the devices comes on or stays off following a power outage
- Supports multiple languages - English, French and Spanish

“Alexa, announce ‘dinner is ready’.”



WFAVD30
(PJS26W wallplate sold separately)



Wi-Fi smart voice dimmer



W	Rating V/AC	Hz	Compatible lamp types	Description	Color suffix	Catalog no.
300	120	60	Dimmable LED/CFL, INC, HAL, FLR, MLV, ELV	Wi-Fi smart voice dimmer	W	□ WFAVD30__

Color ordering information

For ordering devices, include Catalog no. followed by the Color suffix: W (White)



(White)

What do the LED indicator bar colors mean?

The LED lights on the smart voice dimmer are how the device communicates its status.



Orange LED

Your dimmer is starting up or in setup mode

Green LED

Your dimmer has been setup successfully, connecting to your Wi-Fi, or installing an important update

Blue LED

Alexa is listening and processing your request

Red LED

Press the Privacy (mic off) button to mute the microphones

White LED

When you turn your lights ON/OFF or brighten/dim lights

Purple LED

When you are using the app or voice command to change the volume level

Yellow LED

You have notifications to review

Compliances, specifications and availability are subject to change without notice.

Amazon, Alexa and all related logos are trademarks of Amazon.com, Inc. or its affiliates.

Wi-Fi smart dimmers & accessory dimmers



WFD30

Single pole, 3-way, and multi-location

- Pressing and holding ON button for 2 seconds brings light to full brightness without affecting preset levels
- Compatible with accessory dimmer (WACD) or regular 3-way switch for multi-location control

TITLE 24 COMPLIANT



WACD

Does not control a load

- LED indicator system alerts if the device is not connected to the Wi-Fi smart universal dimmer (WFD30)
- Compatible with Wi-Fi smart universal dimmer (WFD30) for multi-location control

Extend your reach even further

Wi-Fi smart universal dimmers

Features

- Set up and control dimmer using the Amazon Alexa App or by voice commands
- No hub required
- Dimmable seven step white LED indicator alongside push pad indicates selected light level
- Preset whether your device comes on or stays off following a power outage
- Adjust how long lights stay on to allow for a safe, convenient exit



WFD30 (PJS26W wallplate sold separately)



Wi-Fi smart universal dimmer

W	Rating		Compatible lamp types	Description	Color suffix	Catalog no.
	V/AC	Hz				
450	120	60	Dimmable LED/CFL	Wi-Fi smart universal dimmer	LA, W, C2, C6, C7	<input type="checkbox"/> WFD30__
600	120	60	INC, HAL, FLR, MLV, ELV			

Accessory dimmers

Features

- Dimmable seven step white LED display alongside push pad indicates selected light level (coordinates light level status with connected Wi-Fi smart universal dimmer)
- Adjust how long lights stay on to allow for a safe, convenient exit



WACD (PJS26W wallplate sold separately)

Accessory dimmer

A	Rating		Description	Color suffix	Catalog no.
	V/AC	Hz			
-	120	60	Accessory dimmer compatible with Wi-Fi smart universal dimmer (WFD30)	LA, W, C2, C6, C7	<input type="checkbox"/> WACD__

Color ordering information

For ordering devices, include Catalog no. followed by the Color suffix: LA (Light Almond), W (White), C2 (Color Change Kit: LA, W, V), C6 (Color Change Kit: W, RB, SG), C7 (Color Change Kit: BK, B, GY)

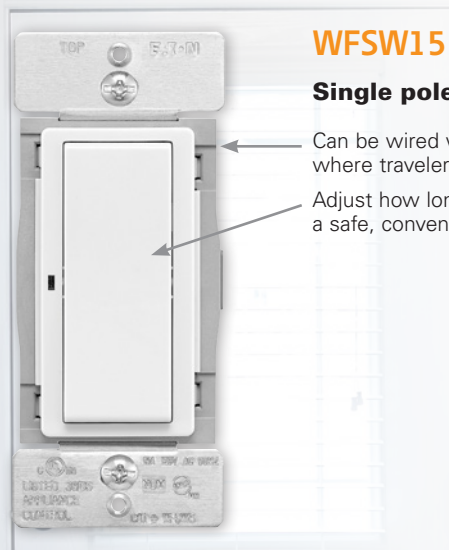
LA	W	LA	W	V	W	RB	SG	BK	B	GY
(Light Almond)	(White)	C2 Color Change Kit			C6 Color Change Kit			C7 Color Change Kit		
		LA (Light Almond), W (White), V (Ivory)			W (White), RB (Oil Rubbed Bronze), SG (Silver Granite)			BK (Black), B (Brown), GY (Gray)		

Compliances, specifications and availability are subject to change without notice.

Amazon, Alexa and all related logos are trademarks of Amazon.com, Inc. or its affiliates.

Wi-Fi smart switches

Simplify
life at
home



WFSW15

Single pole, 3-way and multi-location

- Can be wired with standard 3-way switch where traveler wire exists for 3-way
- Adjust how long lights stay on to allow for a safe, convenient exit



WFSW15
(PJS26W wallplate
sold separately)



Wi-Fi smart switches

Features

- Set up and control switch using the Amazon Alexa App or by voice commands
- No hub required
- Dimmable white LED illuminates to indicate ON/OFF status
- Rated for 1/2 HP motor loads
- Preset whether your device comes on or stays off following a power outage

Wi-Fi smart switch

A	Rating V/AC	Hz	Description		Color suffix	Catalog no.
15	120	60	Wi-Fi smart switch		W, LA, C2, C6, C7	□ WFSW15__

Color ordering information

For ordering devices, include Catalog no. followed by the Color suffix: LA (Light Almond), W (White), C2 (Color Change Kit: LA, W, V), C6 (Color Change Kit: W, RB, SG), C7 (Color Change Kit: BK, B, GY)

LA	W					
(Light Almond)	(White)					
LA	W	V	W	RB	SG	BK B GY
C2 Color Change Kit			C6 Color Change Kit			C7 Color Change Kit
LA (Light Almond), W (White), V (Ivory)			W (White), RB (Oil Rubbed Bronze), SG (Silver Granite)			BK (Black), B (Brown), GY (Gray)

Compliances, specifications and availability are subject to change without notice.

Amazon, Alexa and all related logos are trademarks of Amazon.com, Inc. or its affiliates.

Wi-Fi smart duplex receptacles



WFTRCR15

Single pole and 3-way

- Preset whether your device comes on or stays off following a power outage
- Dimmable white LED illuminates to indicate ON/OFF status
- Provides control of one outlet leaving the other one for normal use

Add wireless control to your outlets



WFTRCR15
(PJS26W wallplate sold separately)



Wi-Fi smart duplex receptacles

Features

- Set up and control receptacle using the Amazon Alexa App or by voice commands
- No hub required
- Can be wired with a standard 3-way switch where a traveler wire exists
- For added safety, complies with NEC® specification that states all receptacles installed in dwelling units must be tamper resistant
- Rated for 1/2 HP motor loads
- Adjust how long lights stay on to allow for a safe, convenient exit

Wi-Fi smart duplex receptacle



A	Rating		Description	Color suffix	Catalog no.
	V/AC	Hz			
15	125	60	Wi-Fi smart duplex receptacle	B, BK, GY, LA, RB, SG, V, W	<input type="checkbox"/> WFTRCR15__

Color ordering information:

For ordering devices, include Catalog No. followed by the Color Suffix: B (Brown), BK (Black), GY (Gray), LA (Light Almond), RB (Oil Rubbed Bronze), SG (Silver Granite), V (Ivory), W (White)



Compliances, specifications and availability are subject to change without notice.

Amazon, Alexa and all related logos are trademarks of Amazon.com, Inc. or its affiliates.

We make what matters work.*

* At Eaton, we believe that power is a fundamental part of just about everything people do. Technology, transportation, energy and infrastructure-these are things the world relies on every day. That's why Eaton is dedicated to helping our customers find new ways to manage electrical, hydraulic and mechanical power more efficiently, safely and sustainably. To improve people's lives, the communities where we live and work, and the planet our future generations depend upon. Because that's what really matters. And we're here to make sure it works.

See more at Eaton.com/whatmatters

Visit our website:
www.eaton.com/smarthome

Electrical Sector
203 Cooper Circle
Peachtree City, GA 30269
United States
Eaton.com
Eaton.com/smarthome

Eaton
1000 Eaton Boulevard
Cleveland, OH 44122
United States
Eaton.com

© 2021 Eaton
All Rights Reserved
Printed in USA
Publication No. BR610059EN
January 2021

Electrical Sector
Canada Operations
5925 McLaughlin Road
Mississauga, Ontario, L5R 1B8
Canada
EatonCanada.ca
Eaton.com/smarthome

Eaton is a registered trademark.

All other trademarks are property
of their respective owners.

Electrical Sector
Mexico Operations
Carr. Tlalnepantla -
Cuautitlan Km 17.8 s/n
Col. Villa Jardin esq.
Cerrada 8 de Mayo
Cuautitlan, Mexico CP 54800
Mexico
Eaton.mx
Eaton.com/smarthome

Follow us on social media to get the
latest product and support information.



Powering Business Worldwide