



2021

**HOME APPLIANCES COLLECTION
FOR EVERY HOME YOU BUILD**





CONTENTS

LG Builder

Brand Portfolio	4
Capabilities	6
Most Reliable Appliances	8
Award Winning Products	9

Refrigeration

French Door	14
Side-by-Side	27
Top Freezer	30
Bottom Freezer	32
Specialty	33

Dishwashers

Top Control and Front Control	45
-------------------------------	----

Cooking

Gas & Dual Fuel Ranges	54
Electric Ranges	57
Wall Ovens	60
Cooktops	62
Microwaves	64
Hoods	67

Laundry

Front Load	84
WashTower™	90
All-in-One Combination	92
Top Load	94
Clothes Styler / Steam Closets	98
Pedestals	99

Add-Ons

Air Purifiers	112
Dehumidifiers	113
Vacuums	113



LG Builder Has The Brands Your Buyers Want

Discover Signature Kitchen Suite, LG SIGNATURE, LG STUDIO and LG and bring your vision to life with our innovative designs for every buyer imaginable. Our product lines offer premium quality to support the full spectrum of builder needs, from starter homes, condos and apartments to high-end luxury dwellings. Welcome to LG Builder—built for better living.



1 For the high-end kitchen, this built-in line of luxury appliances is a leader in innovation and design.

LG SIGNATURE

2 LG's premiere, freestanding home appliances feature exceptional innovation and design.



3 Innovative freestanding and built-in appliances that perform flawlessly, for style-conscious customers.



4 With a complete line of appliances, LG gives you performance and reliability at an affordable price.



LG ThinQ®

With new ways to control the home, a future-ready open platform, and among the most extensive range of Wi-Fi enabled appliances available, LG appliances with ThinQ® technology will change the way customers think—and the way they live.





LG Builder Will Help Build Your Success

Dedicated Team

LG Builder is a special business unit of LG Electronics USA that's dedicated to bringing LG's world-class innovations to the residential, design and construction industry. Our nationwide team of sales managers can help you choose the right products, schedule delivery and installation and offer post-sales support.

Brand Portfolio

LG Builder offers four distinct brand portfolios that support the full spectrum of builder needs, from starter homes to custom dream homes, and everything in-between.

Model Home Program

Model homes are eligible for a discount in qualified communities. Contact your district sales manager for more information.

Personal-Use Discount

Qualifying builders and designers are eligible for a personal-use discount. Contact your district sales manager for more information.

Logistics

Count on fast and reliable delivery. LG Builder will get you what you need, when you need it.

Digital Assets

From spec sheets to images to owner's manuals, LG Builder has the assets you need. Contact your sales representative for details or visit LGBuilderMarketing.com.

Consumer Rebates

All active rebate information and forms can be found at lgrebatecenter.com.



Customer Support / Product Service Support Team (For Dealers / Builders Only)

The Product Service Support team is available Monday–Friday, 8am–6pm CST.*

- General Service Questions
- Service Call Scheduling
- Check Service Status
- Warranty Inquiries

builder@lgsupport.com
833-242-2791

For Dealers and Builders who need to verify ETA, availability, and tracking inquiries on orders placed, email builder.orderentry@lgcns.com or call 1-800-377-8204 Monday–Friday, 8am–8pm and Saturday 9am–5pm EST.*

For questions on LG SIGNATURE products contact:

signature@lgexecutiveservices.com
800-984-6306

Expert Support for Your Customers

Answer customer questions about product setup, repair and maintenance issues and more.. Visit lg.com/us/support.

- | | |
|--|----------------------|
| Manuals & Documents
Installation Guides | Find Service Center |
| Software & Drivers | Warranty Information |
| Request a Repair | Document Upload |
| Help Library | Parts & Accessories |

*Excluding company holidays: New Year's Day, President's Day, Thanksgiving Day, Post Thanksgiving Day, Christmas Eve and Christmas Day



LG is America's
Most Reliable
 Line of Home Appliances

According to a 2021 Leading Consumer Testing Organization



Your Customers Deserve Award Winning Products



LG InstaView® Refrigerator with Craft Ice™

- ★ 2021 Beautiful Kitchen & Baths: Most Innovative Products
- ★ 2020 TWICE VIP Finalist
- ★ 2020 & 2021 CES Innovation Award



LG WashTower™ with Center Control™

- ★ 2021 NAHB Global Innovation Award Finalist
- ★ 2021 Best of KBIS Impact Winner
- ★ 2021 KBIS Design Bites "Brand with the Biggest Bite"
- ★ 2021 CES Absolute Best Products



LG Front Load Washer and Dryer

- ★ 2020 Pro Builder Top 100
- ★ 2020 Best of KBIS Finalist
- ★ 2020 CES Innovation Award
- ★ 2020 Good Housekeeping Editor's Pick



LG Styler® Steam Closet

- ★ 2020 Pro Builder Top 100
- ★ 2020 CES Innovation Award
- ★ 2020 Beautiful Kitchen & Baths: Most Innovative Products



REFRIGERATION

REFRIGERATION FEATURES



InstaView® Door-in-Door®

Bringing innovation and distinctive design together, LG's new refrigerator with InstaView® Door-in-Door® will enhance even the most beautifully crafted kitchen. The sleek tinted glass panel illuminates with two quick knocks, allowing you to see inside the easy access compartment without ever opening the door, reducing cold air loss to help keep food fresher longer. When you need to access your most often-used items, the Door-in-Door® with ColdSaver™ Panel acts like a barrier keeping cold air in where it matters most—in the inside.

Dual Ice Maker with Craft Ice™

Dual ice makers, dispensed from the door and located in the freezer compartment, automatically produce ice so you never run out. The icemaker in the freezer makes LG's exclusive round Craft Ice™—crafted to melt slower and chill more efficiently, while the ice maker on the door produces and dispenses traditional cubed or crushed ice. From craft cocktails and whiskey to soft drinks, lemonade, even iced coffee, give your beverages the perfect ice. Need Craft Ice™ twice as fast? Activate Craft Ice+ in the ThinQ® app or by pressing the freezer button on the dispenser for 3 seconds.

Door-in-Door®

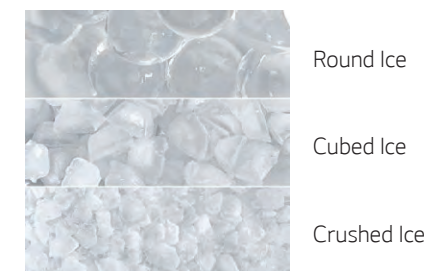
Offering quick and easy access to favorite foods, the popular Door-in-Door® design gets even better with an adjustable bin that smoothly glides up and down to fit snacks and drinks of all sizes.

ColdSaver™ Panel

Door-in-Door® with ColdSaver™ Panel acts like a barrier keeping cold air in where it matters most—in the inside—giving you peace of mind that food will stay fresh. It reduces cold air loss to help keep food fresher longer.

LG ThinQ® Technology (Smart Wi-Fi Enabled)

Receive notifications on your smartphone when the door is open or your water filter needs to be replaced. Diagnose issues and get quick, expert advice. From making extra ice for tonight's dinner party while you're at work to adjusting temperatures with simple voice commands, LG refrigerators with ThinQ® technology make life easier.



*Shape and clarity of ice may vary with settings, water supply and home use conditions.

REFRIGERATION FEATURES

Full-Convert™ Drawer

This flexible drawer gives you more capacity when you need it, with the ability to fully convert from fridge to freezer with one quick touch so you can chill today, freeze tomorrow. Create instant space for that oversize ice cream birthday cake using the Freeze setting. Or prep for holiday gatherings with Chilled Wine, Deli / Snacks, Cold Drinks or Meat / Seafood options. Adjustable dividers keep everything neat and organized.



3-Tier Organization™ Freezer

The 3-Tier Organization™ Freezer system can keep food organized and easily accessible. Now you can prioritize what's in your freezer so you can find anything fast.

Glide N' Serve® Pantry Drawer

Located just below the humidity-controlled crispers, this full-width, temperature-controlled drawer makes party preparations a snap. Store everything from deli platters to fruit trays at just the right temperature with one press of the touch pad controls. The lid opens automatically when you slide out the drawer for fast loading and unloading.

Tall Ice & Water Dispenser® with Measured Fill

From pitchers to pint glasses, this external filtered ice & water dispenser can accommodate just about any container. The water and ice dispenser in this LG refrigerator is one of the tallest around, measuring in at an ultra-accommodating 12.6 inches. The convenient Measured Fill feature lets you select the exact amount of filtered water in ounces (4, 8, 16, or 32), to save you the time and hassle of measuring for drinks mixes, recipes and more. Plus, the brushed metal finish touch display includes the easy-to-operate temperature controls and refrigerator options.



Slim SpacePlus® Ice System

Ice makers are great, but not if it means you can't fit all of your food in the fridge. The Slim SpacePlus® Ice System provides the most shelf space* and allows even more space for door bins. It's not just capacity, it's more usable capacity thanks to features like the Hidden Water Filter and Slim SpacePlus® ice system that free up valuable shelf space.



REFRIGERATION FEATURES



Smart Cooling Plus® System

Smart Cooling Plus® technology is designed to maintain superior conditions within the refrigerator. The Linear Compressor and Dual Evaporators react quickly to humidity and temperature levels and help keep your food fresher, longer. Meanwhile, strategically placed vents in every section help to surround your food with cool, fresh air no matter where you put it.

Multi-Air Flow Freshness System

Multi-Air Flow System is designed to maintain superior humidity and temperature levels to help keep your food fresher, longer. Digital sensors constantly monitor conditions within the refrigerator and strategically-placed vents in every section to help surround your food with cool air no matter where you put it.

Fresh Air Filter

Your food isn't the only thing that stays fresh. Only LG offers a premium Fresh Air Filter with dedicated fan that pushes cleaner, fresher air into the fridge.

Door Cooling+

Located in the top of the fresh food section, the Door Cooling+ vent extends the reach of LG's Smart Cooling® system. Blasts of cool air reach all areas of the refrigerator—including the door—to help maintain consistent temperatures from top to bottom. It helps keep all foods fresh and flavorful and keeps produce fresh up to 2X longer.*



CoolGuard™

CoolGuard™ metal interior panel adds a premium look.

10-Year Manufacturer's Limited Warranty on Inverter Linear Compressor

When you buy a refrigerator, you don't want to worry that it won't last. Because the Inverter Linear Compressor motor uses fewer moving parts and operates more efficiently, LG confidently backs the motor with a 10-year limited warranty.

LED Lighting

LED panels and strips in provide an exceptionally bright interior and saves energy over traditional lighting.



*Than other LG models. Based on LG internal tests between LFXS30796D and LRFDS3006S and in combination with Linear Cooling and Smart Cooling technologies.

FRENCH DOOR REFRIGERATORS WITH INSTAVIEW® DOOR-IN-DOOR®



URNTS3106N
30.8 cu. ft. InstaView® Door-in-Door® 4-Door French Door Refrigerator (36" Wide)

- 30.8 cu. ft. Capacity
- InstaView® Door-in-Door®
- Auto Open Door™
- Auto Open Drawer™
- Voice Control
- FRESHShield™ Cooling
- LUMIShelf™ Undershelf Lighting
- Custom Chill™ Pantry
- Measured Fill
- CoolGuard™ Stainless Steel Back Wall
- LG ThinQ® Technology (Wi-Fi)

● URNTS3106N – Textured Steel™

LG SIGNATURE



URNTC2306N
22.8 cu. ft. Counter Depth InstaView® Door-in-Door® 4-Door French Door Refrigerator (36" Wide)

- Counter Depth
- 22.8 cu. ft. Capacity
- InstaView® Door-in-Door®
- Auto Open Door™
- Auto Open Drawer™
- Voice Control
- FRESHShield™ Cooling
- LUMIShelf™ Undershelf Lighting
- Custom Chill™ Pantry
- Measured Fill
- CoolGuard™ Stainless Steel Back Wall
- LG ThinQ® Technology (Wi-Fi)

● URNTC2306N – Textured Steel™

LG SIGNATURE



SRFVC2416S
23.5 cu. ft. Counter Depth InstaView® Door-in-Door® French Door Refrigerator (36" Wide)

- Counter Depth
- 23.5 cu. ft. Capacity
- InstaView® Door-in-Door® with ColdSaver™ Panel
- Dual Ice Maker with Craft Ice™
- Smart Cooling Plus™ System
- Door Cooling +
- Measured Fill
- Premium LED Lighting
- Dual Evaporators
- CoolGuard™ Stainless Steel Back Wall and Charcoal Gray Interior
- LG ThinQ® Technology (Wi-Fi)

● SRFVC2416S – PrintProof™ Stainless Steel



FRENCH DOOR REFRIGERATORS WITH INSTAVIEW® DOOR-IN-DOOR®



LRMVS3006_
29.5 cu. ft. InstaView® Door-in-Door® 4-Door French Door Refrigerator (36" Wide)

- 29.5 cu. ft. Capacity
- InstaView® Door-in-Door®
- Full-Convert™ Drawer
- Dual Ice Maker with Craft Ice™
- Smart Cooling Plus™ System
- Door Cooling +
- Premium LED Lighting with ColdSaver™ Panel
- Measured Fill
- CoolGuard™ Stainless Steel Back Wall
- LG ThinQ® Technology (Wi-Fi)

● LRMVS3006S – PrintProof™ Stainless Steel
 ● LRMVS3006D – PrintProof™ Black Stainless Steel



LRMVC2306_
22.5 cu. ft. Counter Depth InstaView® Door-in-Door® 4-Door French Door Refrigerator (36" Wide)

- Counter Depth
- 22.5 cu. ft. Capacity
- InstaView® Door-in-Door® with ColdSaver™ Panel
- Full-Convert™ Drawer
- Dual Ice Maker with Craft Ice™
- Smart Cooling Plus™ System
- Door Cooling +
- Premium LED Lighting
- Measured Fill
- CoolGuard™ Stainless Steel Back Wall
- LG ThinQ® Technology (Wi-Fi)

● LRMVC2306S – PrintProof™ Stainless Steel
 ● LRMVC2306D – PrintProof™ Black Stainless Steel



LRFVS3006_
29.7 cu. ft. InstaView® Door-in-Door® French Door Refrigerator (36" Wide)

- 29.7 cu. ft. Capacity
- InstaView® Door-in-Door® with ColdSaver™ Panel
- Dual Ice Maker with Craft Ice™
- Smart Cooling Plus™ System
- Door Cooling +
- Measured Fill
- Premium LED Lighting
- Dual Evaporators
- CoolGuard™ Stainless Steel Back Wall
- LG ThinQ® Technology (Wi-Fi)

● LRFVS3006S – PrintProof™ Stainless Steel
 ● LRFVS3006D – PrintProof™ Black Stainless Steel

FRENCH DOOR REFRIGERATORS WITH INSTAVIEW® DOOR-IN-DOOR®



LRFVC2406_ 23.5 cu. ft. Counter Depth InstaView® Door-in-Door® French Door Refrigerator (36" Wide)

- Counter Depth
 - 23.5 cu. ft. Capacity
 - InstaView® Door-in-Door® with ColdSaver™ Panel
 - Dual Ice Maker with Craft Ice™
 - Smart Cooling Plus™ System
 - Door Cooling +
 - Measured Fill
 - Premium LED Lighting
 - Dual Evaporators
 - CoolGuard™ Stainless Steel Back Wall
 - LG ThinQ® Technology (Wi-Fi)
- LRFVC2406S – PrintProof™ Stainless Steel
● LRFVC2406D – PrintProof™ Black Stainless Steel



LRMVS2806_ 27.6 cu. ft. InstaView® Door-in-Door® 4-Door French Door Refrigerator (36" Wide)

- 27.6 cu. ft. Capacity
 - InstaView® Door-in-Door® with ColdSaver™ Panel
 - Double Freezer Drawers
 - Dual Ice Maker with Craft Ice™ +
 - Smart Cooling® System
 - Door Cooling +
 - LED Lighting
 - LoDecibel™ Quiet Operation
 - LG ThinQ® Technology (Wi-Fi)
- LRMVS2806S – PrintProof™ Stainless Steel
● LRMVS2806D – PrintProof™ Black Stainless Steel



LMXS28596_ 27.6 cu. ft. InstaView® Door-in-Door® 4-Door French Door Refrigerator (36" Wide)

- 27.6 cu. ft. Capacity
 - InstaView® Door-in-Door® with ColdSaver™ Panel
 - Door-in-Door® with ColdSaver™ Panel
 - Double Freezer Drawers
 - Smart Cooling® System
 - Door Cooling +
 - LED Lighting
 - LoDecibel™ Quiet Operation
 - LG ThinQ® Technology (Wi-Fi)
- LMXS28596S – PrintProof™ Stainless Steel
● LMXS28596D – PrintProof™ Black Stainless Steel

FRENCH DOOR REFRIGERATORS WITH INSTAVIEW® DOOR-IN-DOOR®



LFXS26596_ 26 cu. ft. InstaView® Door-in-Door® French Door Refrigerator (36" Wide)

- 26 cu. ft. Capacity
 - InstaView® Door-in-Door® with ColdSaver™ Panel
 - Dual Ice Maker
 - Smart Cooling® System
 - Door Cooling +
 - LED Lighting
 - LG ThinQ® Technology (Wi-Fi)
- LFXS26596S – PrintProof™ Stainless Steel
● LFXS26596D – PrintProof™ Black Stainless Steel



LFXC22596_ 21.9 cu. ft. Counter Depth InstaView® Door-in-Door® French Door Refrigerator (36" Wide)

- Counter Depth
 - 21.9 cu. ft. Capacity
 - InstaView® Door-in-Door® with ColdSaver™ Panel
 - Dual Ice Maker
 - Smart Cooling® System
 - Door Cooling +
 - LED Lighting
 - LG ThinQ® Technology (Wi-Fi)
- LFXC22596S – PrintProof™ Stainless Steel
● LFXC22596D – PrintProof™ Black Stainless Steel



LFCS27596S 27 cu. ft. InstaView® Door-in-Door® French Door Refrigerator (36" Wide)

- 27 cu. ft. Capacity
 - InstaView® Door-in-Door® with ColdSaver™ Panel
 - Door Cooling +
 - LED Lighting
 - Factory Installed Ice Maker
 - Filtered Ice
 - Smart Cooling® System
 - LoDecibel™ Quiet Operation
 - SmartDiagnosis™
- LFCS27596S – PrintProof™ Stainless Steel

FRENCH DOOR REFRIGERATORS WITH INSTAVIEW® DOOR-IN-DOOR®



LFCC23596S
22.6 cu. ft. Counter Depth InstaView® Door-in-Door® French Door Refrigerator (36" Wide)

- Counter Depth
 - 22.6 cu. ft. Capacity
 - InstaView® Door-in-Door® with ColdSaver™ Panel
 - Door Cooling +
 - LED Lighting
 - Factory Installed Ice Maker
 - Filtered Ice
 - Smart Cooling® System
 - LoDecibel™ Quiet Operation
 - SmartDiagnosis™
- LFCC23596S – PrintProof™ Stainless Steel



FRENCH DOOR REFRIGERATORS WITH DOOR-IN-DOOR®



LRMS3006_
29.5 cu. ft. Door-in-Door® 4-Door French Door Refrigerator (36" Wide)

- 29.5 cu. ft. Capacity
- Door-in-Door® with ColdSaver™ Panel and Adjustable Bin
- Full-Convert™ Drawer
- Dual Ice Maker with Craft Ice™
- Smart Cooling Plus™ System
- Door Cooling +
- Premium LED Lighting
- Measured Fill
- CoolGuard™ Stainless Steel Back Wall
- LG ThinQ® Technology (Wi-Fi)



- LRMS3006S – PrintProof™ Stainless Steel
- LRMS3006D – PrintProof™ Black Stainless Steel



LRMD2306_
22.5 cu. ft. Counter Depth Door-in-Door® 4-Door French Door Refrigerator (36" Wide)

- Counter Depth
- 22.5 cu. ft. Capacity
- Door-in-Door® with ColdSaver™ Panel and Adjustable Bin
- Full-Convert™ Drawer
- Dual Ice Maker with Craft Ice™
- Smart Cooling Plus™ System
- Door Cooling +
- Premium LED Lighting
- Measured Fill
- CoolGuard™ Stainless Steel Back Wall
- LG ThinQ® Technology (Wi-Fi)



- LRMD2306S – PrintProof™ Stainless Steel
- LRMD2306D – PrintProof™ Black Stainless Steel



LRFDS3016_
29.7 cu. ft. Door-in-Door® French Door Refrigerator (36" Wide)

- 29.7 cu. ft. Capacity
- Door-in-Door® with ColdSaver™ Panel and Adjustable Bin
- Dual Ice Maker with Craft Ice™
- Smart Cooling Plus™ System
- Door Cooling +
- Measured Fill
- Premium LED Lighting
- Dual Evaporators
- CoolGuard™ Stainless Steel Back Wall
- LG ThinQ® Technology (Wi-Fi)



- LRFDS3016S – PrintProof™ Stainless Steel
- LRFDS3016D – PrintProof™ Black Stainless Steel

FRENCH DOOR REFRIGERATORS WITH DOOR-IN-DOOR®



LRFDC2406_ 23.5 cu. ft. Counter Depth Door-in-Door® French Door Refrigerator (36" Wide)

- Counter Depth
- 23.5 cu. ft. Capacity
- Door-in-Door® with ColdSaver™ Panel and Adjustable Bin
- Dual Ice Maker with Craft Ice™
- Smart Cooling Plus™ System
- Door Cooling +
- Measured Fill
- Premium LED Lighting
- Dual Evaporators
- CoolGuard™ Stainless Steel Back Wall
- LG ThinQ® Technology (Wi-Fi)

- LRFDC2406S – PrintProof™ Stainless Steel
- LRFDC2406D – PrintProof™ Black Stainless Steel



FRENCH DOOR REFRIGERATORS



LRMXS2806_ 27.8 cu. ft. 4-Door French Door Refrigerator (36" Wide)

- 27.8 cu. ft. Capacity
- Double Freezer Drawers
- Dual Ice Maker with Craft Ice™+
- Smart Cooling® System
- Door Cooling +
- LED Lighting
- LoDecibel™ Quiet Operation
- LG ThinQ® Technology (Wi-Fi)

- LRMXS2806S – PrintProof™ Stainless Steel
- LRMXS2806D – PrintProof™ Black Stainless Steel



LRMXC2206_ 22.0 cu. ft. Counter Depth 4-Door French Door Refrigerator (36" Wide)

- Counter Depth
- 22.0 cu. ft. Capacity
- Double Freezer Drawers
- Dual Ice Maker with Craft Ice™+
- Smart Cooling® System
- Door Cooling +
- LED Lighting
- LoDecibel™ Quiet Operation
- LG ThinQ® Technology (Wi-Fi)

- LRMXC2206S – PrintProof™ Stainless Steel
- LRMXC2206D – PrintProof™ Black Stainless Steel



LMXS28626_ 27.8 cu. ft. 4-Door French Door Refrigerator (36" Wide)

- 27.8 cu. ft. Capacity
- Double Freezer Drawers
- Smart Cooling® System
- LED Lighting
- LoDecibel™ Quiet Operation
- LG ThinQ® Technology (Wi-Fi)

- LMXS28626S – PrintProof™ Stainless Steel
- LMXS28626D – PrintProof™ Black Stainless Steel



FRENCH DOOR REFRIGERATORS



LMXC22626_ 22.0 cu. ft. Counter Depth 4-Door French Door Refrigerator (36" Wide)

- Counter Depth
 - 22.0 cu. ft. Capacity
 - Double Freezer Drawers
 - Smart Cooling® System
 - Door Cooling +
 - LED Lighting
 - LoDecibel™ Quiet Operation
 - LG ThinQ® Technology (Wi-Fi)
- LMXC22626S – Stainless Steel
● LMXC22626D – PrintProof™ Black Stainless Steel



FRENCH DOOR REFRIGERATORS



LRFXC2416_ 23.5 cu. ft. Counter Depth French Door Refrigerator (36" Wide)

- Counter Depth
 - 23.5 cu. ft. Capacity
 - Dual Ice Maker with Craft Ice™
 - Smart Cooling Plus™ System
 - Door Cooling +
 - Measured Fill
 - Premium LED Lighting
 - Dual Evaporators
 - CoolGuard™ Stainless Steel Back Wall
 - LG ThinQ® Technology (Wi-Fi)
- LRFXC2416S – PrintProof™ Stainless Steel
● LRFXC2416D – PrintProof™ Black Stainless Steel



LMWS27626S 26.9 cu. ft. 4-Door French Door Refrigerator (36" Wide)

- 26.9 cu. ft. Capacity
 - Double Freezer Drawers
 - Internal Water Dispenser
 - Smart Cooling® System
 - Door Cooling +
 - LED Lighting
 - LoDecibel™ Quiet Operation
 - SmartDiagnosis™
- LMWS27626S – PrintProof™ Stainless Steel



LFXS28968_ 27.9 cu. ft. French Door Refrigerator (36" Wide)

- 27.9 cu. ft. Capacity
 - Slim SpacePlus® Ice System
 - Smart Cooling® System
 - Door Cooling +
 - LED Lighting
 - LoDecibel™ Quiet Operation
 - LG ThinQ® Technology (Wi-Fi)
- LFXS28968S – PrintProof™ Stainless Steel
● LFXS28968D – PrintProof™ Black Stainless Steel



LMWC23626S 22.7 cu. ft. Counter Depth 4-Door French Door Refrigerator (36" Wide)

- Counter Depth
 - 22.7 cu. ft. Capacity
 - Double Freezer Drawers
 - Internal Water Dispenser
 - Smart Cooling® System
 - Door Cooling +
 - LED Lighting
 - LoDecibel™ Quiet Operation
 - SmartDiagnosis™
- LMWC23626S – PrintProof™ Stainless Steel



LFXC22526_ 22.1 cu. ft. Counter Depth French Door Refrigerator (36" Wide)

- Counter Depth
 - 22.1 cu. ft. Capacity
 - Slim SpacePlus® Ice System
 - Dual Ice Maker
 - Smart Cooling® System
 - Door Cooling +
 - LED Lighting
 - LoDecibel™ Quiet Operation
 - LG ThinQ® Technology (Wi-Fi)
- LFXC22526S – PrintProof™ Stainless Steel
● LFXC22526D – PrintProof™ Black Stainless Steel



FRENCH DOOR REFRIGERATORS



LFXS26973_ 26.2 cu. ft. French Door Refrigerator (36" Wide)

- 26.2 cu. ft. Capacity
 - Slim SpacePlus® Ice System
 - Dual Ice Maker
 - Smart Cooling® System
 - Door Cooling +
 - LED Lighting
 - LoDecibel™ Quiet Operation
 - LG ThinQ® Technology (Wi-Fi)
- LFXS26973S – PrintProof™ Stainless Steel
● LFXS26973D – PrintProof™ Black Stainless Steel



LFCC22426S 22.8 cu. ft. Counter Depth French Door Refrigerator (36" Wide)

- Counter Depth
 - 22.8 cu. ft.
 - Smart Cooling® System
 - Door Cooling +
 - LED Lighting
 - Factory Installed Ice Maker
 - Filtered Ice
 - LoDecibel™ Quiet Operation
 - SmartDiagnosis™
- LFCC22426S – PrintProof™ Stainless Steel



LRFWS2906_ 29 cu. ft. French Door Refrigerator (36" Wide)

- 29 cu. ft. Capacity
 - Slim Design, Chilled Water Dispenser (Half Gallon Capacity)
 - LED Lighting
 - SmartPull™ Freezer Handle
 - Factory Installed Ice Maker
 - LoDecibel™ Quiet Operation
 - SmartDiagnosis™
- LRFWS2906V – Stainless Look
● LRFWS2906S – PrintProof™ Stainless Steel
● LRFWS2906D – PrintProof™ Black Stainless Steel

FRENCH DOOR REFRIGERATORS



LRFXS2503_ 24.5 cu. ft. French Door Refrigerator (33" Wide)

- 33" Width
 - 24.5 cu. ft. Capacity
 - Slim SpacePlus® Ice System
 - Smart Cooling® System
 - Door Cooling +
 - LED Lighting
 - LoDecibel™ Quiet Operation
 - LG ThinQ® Technology (Wi-Fi)
- LRFXS2503S – PrintProof™ Stainless Steel
● LRFXS2503D – PrintProof™ Black Stainless Steel



LRFCS2503S 25.2 cu. ft. French Door Refrigerator (33" Wide)

- 33" Width
 - 25.2 cu. ft. Capacity
 - Smart Cooling® System
 - Door Cooling +
 - LED Lighting
 - Factory Installed Ice Maker
 - Filtered Ice
 - LoDecibel™ Quiet Operation
 - SmartDiagnosis™
- LRFCS2503S – PrintProof™ Stainless Steel



LFDS22520S 21.8 cu. ft. French Door Refrigerator (30" Wide)

- 30" Width
 - 21.8 cu. ft. Capacity
 - Water Dispenser
 - Smart Cooling® System
 - LED Lighting
 - Factory Installed Ice Maker
 - Filtered Ice & water
 - LoDecibel™ Quiet Operation
 - SmartDiagnosis™
- LFDS22520S – Stainless Steel

FRENCH DOOR REFRIGERATORS



LFC22770ST
21.8 cu. ft. French Door Refrigerator (30" Wide)

- 30" Width
 - 22 cu. ft. Capacity
 - Smart Cooling® System
 - LED Lighting
 - SmartPull™ Freezer Handle
 - Factory Installed Ice Maker
 - LoDecibel™ Quiet Operation
 - Auto Closing Door Hinge
 - SmartDiagnosis™
- LFC22770ST – Stainless Steel



LFC22520_
21.8 cu. ft. French Door Refrigerator (30" Wide)

- 30" Width
 - 21.8 cu. ft. Capacity
 - Smart Cooling® System
 - LED Lighting
 - Factory Installed Ice Maker
 - LoDecibel™ Quiet Operation
 - SmartDiagnosis™
- LFC22520S – Stainless Steel
● LFC22520D – PrintProof™ Black Stainless Steel

SIDE-BY-SIDE REFRIGERATORS



SRSXB2622S
Built-in Side-by-Side Refrigerator (42" Wide)

- Pro-Style Design with Seamless Finishing in Every Edge and Corner
 - 25.6 cu. ft. Capacity
 - Stainless Steel Ice and Water Dispenser
 - Versatile Interior Design
 - SpacePlus® Ice System
 - Premium LED Lighting
 - Soft Closing Door
 - Dual Evaporators
 - LG ThinQ® Technology (Wi-Fi)
 - 2 Year Limited Warranty
- SRSXB2622S – PrintProof™ Stainless Steel



LRSES2706V
26.8 cu. ft. InstaView® Door-in-Door® Side-by-Side Refrigerator (36" Wide)

- 26.8 cu. ft. Capacity
 - InstaView® Door-in-Door®
 - Multi-Air Flow™ Cooling
 - LED Lighting
 - Factory Installed Ice Maker
 - LoDecibel™ Quiet Operation
 - SmartDiagnosis™
- LRSES2706V – Stainless Look

Transitioning to LRSES2806S Q4 2021; Available in limited quantities, contact your LG Sales Rep for details



SIDE-BY-SIDE REFRIGERATORS



LRS2706V 26.8 cu. ft. Door-in-Door® Side-by-Side Refrigerator (36" Wide)

- 26.8 cu. ft. Capacity
 - Door-in-Door™ with ColdSaver™ Panel
 - Multi-Air Flow™ Cooling
 - LED Lighting
 - Factory Installed Ice Maker
 - LoDecibel™ Quiet Operation
 - SmartDiagnosis™
- LRS2706V – Stainless Look

End-of-Life Q4 2021; Available in limited quantities, contact your LG Sales Rep for details

SIDE-BY-SIDE REFRIGERATORS



LSXS26366_ 26.1 cu. ft. Door-in-Door® Side-by-Side Refrigerator (36" Wide)

- 26.1 cu. ft. Capacity
 - Door-in-Door™ with ColdSaver™ Panel
 - Smart Cooling® System
 - Multi-Air Flow™ Cooling
 - Premium LED Lighting
 - Integrated Ice & Water Dispenser
 - SpacePlus® Ice System
 - LoDecibel™ Quiet Operation
 - SmartDiagnosis™
- LSXS26366S – Stainless Steel
● LSXS26366D – PrintProof™ Black Stainless Steel

Transitioning to LRSDS2706S/D Q3 2021; Available in limited quantities, contact your LG Sales Rep for details



LSXS26396S 26.1 cu. ft. InstaView® Door-in-Door® Side-by-Side Refrigerator (36" Wide)

- 26.1 cu. ft. Capacity
 - InstaView® Door-in-Door®
 - Multi-Air Flow™ Cooling
 - Premium LED Lighting
 - Fresh Air Filter
 - Integrated Ice & Water Dispenser
 - SpacePlus® Ice System
 - LoDecibel™ Quiet Operation
 - LG ThinQ® Technology (Wi-Fi)
- LSXS26396S – Stainless Look

Transitioning to LRSOS2706S/D Q3 2021; Available in limited quantities, contact your LG Sales Rep for details



LSXC22426S 21.9 cu. ft. Counter Depth Side-by-Side Refrigerator (36" Wide)

- Counter Depth
 - 21.9 cu. ft. Capacity
 - Multi-Air Flow™ Cooling
 - LED Lighting
 - Fresh Air Filter
 - Integrated Ice & Water Dispenser
 - SpacePlus® Ice System
 - LoDecibel™ Quiet Operation
 - LG ThinQ® Technology (Wi-Fi)
- LSXC22426S – Stainless Look

Transitioning to LRSXC2306S/V Q3 2021; Available in limited quantities, contact your LG Sales Rep for details



LSXC22396S 21.7 cu. ft. Counter Depth InstaView® Door-in-Door® Side-by-Side Refrigerator (36" Wide)

- Counter Depth
 - 21.7 cu. ft. Capacity
 - InstaView® Door-in-Door®
 - Multi-Air Flow™ Cooling
 - Premium LED Lighting
 - Fresh Air Filter
 - Integrated Ice & Water Dispenser
 - SpacePlus® Ice System
 - LoDecibel™ Quiet Operation
 - LG ThinQ® Technology (Wi-Fi)
- LSXC22396S – Stainless Look

Transitioning to LRSOC2306S/D Q3 2021; Available in limited quantities, contact your LG Sales Rep for details



LSXS26326S 26.2 cu. ft. Side-by-Side Refrigerator (36" Wide)

- 26.2 cu. ft. Capacity
 - Smart Cooling® System
 - Multi-Air Flow™ Cooling
 - LED Lighting
 - Integrated Ice & Water Dispenser
 - SpacePlus® Ice System
 - LoDecibel™ Quiet Operation
 - SmartDiagnosis™
- LSXS26326S – Stainless Steel

Transitioning to LRSXS2706S/V/B/W Q3 2021; Available in limited quantities, contact your LG Sales Rep for details

TOP FREEZER REFRIGERATORS



LRTLS2403S 23.8 cu. ft. Top Freezer Refrigerator

- 23.8 cu. ft. Capacity
 - Internal Water Dispenser
 - Filtered Water
 - Optional Ice Maker – LK75C
 - Humidity-Controlled Crispers
 - LED Lighting
 - Contoured Doors with Pocket Handles
- LRTLS2403S – Stainless Steel



TOP FREEZER REFRIGERATORS



LTCS20030S 20.2 cu. ft. Top Freezer Refrigerator (30" Wide)

- 20.2 cu. ft. Capacity
 - Reversible Door
 - Factory Installed Ice Maker
 - Humidity-Controlled Crispers
 - LED Lighting
- LTCS20030S – Stainless Steel



LTWS24223S 23.8 cu. ft. Top Freezer Refrigerator (33" Wide)

- 23.8 cu. ft. Capacity
 - Internal Water Dispenser
 - Filtered Water
 - Factory Installed Ice Maker
 - Full Width Pantry Drawer
 - LED Lighting
 - Contoured Doors with Pocket Handles
 - SmartDiagnosis™
- LTWS24223S – Stainless Steel



End-of-Life Q3 2021; Available in limited quantities, contact your LG Sales Rep for details



LTCS20020_ 20.2 cu. ft. Top Freezer Refrigerator (30" Wide)

- 20.2 cu. ft. Capacity
 - Reversible Door
 - Premium LED Refrigerator Lights
 - Humidity-Controlled Crispers
 - Optional Ice Maker LK65C
- LTCS20020S – Stainless Steel
○ LTCS20020W – Smooth White
● LTCS20020B – Smooth Black



LTCS24223_ 23.8 cu. ft. Top Freezer Refrigerator (33" Wide)

- 23.8 cu. ft. (33" Wide)
 - Factory Installed Ice Maker
 - Full Width Pantry Drawer
 - LED Lighting
 - Contoured Doors with Pocket Handles
 - SmartDiagnosis™
- LTCS24223S – Stainless Steel
○ LTCS24223W – Smooth White



End-of-Life Q3 2021; Available in limited quantities, contact your LG Sales Rep for details



LTNC11131V 11 cu. ft. Top Freezer Refrigerator (24" Wide)

- 11 cu. ft. Capacity
 - LoDecibel™ Quiet Operation
 - LED Lighting
 - Door Cooling+
 - SmartDiagnosis™
- LTNC11131V – Stainless Look

BOTTOM FREEZER REFRIGERATORS



- LRDCS2603_**
25.5 cu. ft. Bottom Freezer Refrigerator (33" Wide)
- 25.5 cu. ft. Capacity
 - Smart Cooling® System
 - Door Cooling+
 - Multi-Air Flow™ Technology
 - Premium LED Lighting
 - Glide N' Serve® Drawer
 - 2 Humidity Crispers
 - Factory Installed Ice Maker
 - SmartDiagnosis™
- LRDCS2603S – PrintProof™ Stainless Steel
 - LRDCS2603D – PrintProof™ Black Stainless Steel



- LBNC15231V**
14.7 cu. ft. Bottom Freezer Refrigerator (28" Wide)
- 14.7 cu. ft. Capacity
 - Door Cooling+
 - Ceiling LED Lighting
 - Multi-Air Flow™ Technology
 - SmartDiagnosis™
- LBNC15231V – Stainless Look



- LRBCC1204S**
12.0 cu. ft. Bottom Freezer Refrigerator (24" Wide)
- 12 cu. ft. Capacity
 - Sleek Pocket Handle Design
 - Door Cooling+
 - Factory Installed Ice Maker
 - Fingerprint Resistant Finish
 - Reversible Door
 - SmartDiagnosis™
- LRBCC1204S – PrintProof™ Stainless Steel



BOTTOM FREEZER REFRIGERATORS



- LRBNC1104S**
10.8 cu. ft. Bottom Freezer Refrigerator (24" Wide)
- Sleek Pocket Handle Design
 - 11 cu. ft. Capacity
 - Door Cooling+
 - Smart Inverter Compressor
 - Reversible Door
- LRBNC1104S – PrintProof™ Stainless Steel



SPECIALTY REFRIGERATORS



- URETC1408N**
15.3 cu. ft. Counter Depth Wine Cellar Refrigerator (28" Wide)
- 28" Wide Wine Refrigerator
 - 65 Wine Bottle Capacity
 - InstaView® Door
 - Auto Open Door™
 - Optimal Preservation Technology™
 - Multi-Temperature Zones
 - Fully Convertible Drawers with Auto Lift
 - Voice Control
 - LUMIShelf™ Undershelf Lighting
 - Beechwood Shelves
 - LG ThinQ® Technology (Wi-Fi)
- URETC1408N – Textured Steel™



LG SIGNATURE



SPECIALTY REFRIGERATORS



LRONC0705V
6.89 cu. ft. Single Door Refrigerator (21" Wide)

- 6.9 cu. ft. Capacity
- Easy-Access Organization
- Extra Large Produce Bin
- Semi Auto Defrost
- Curved Pocket Handle
- LRONC0705V – Stainless Look



LROFC0605V
5.8 cu. ft. Single Door Freezer Refrigerator (21" Wide)

- 5.8 cu. ft. capacity
- Easy-Reach Organization
- Direct Cooling System
- Curved Pocket Handle
- LROFC0605V – Stainless Look



LRKNS1400V
14.3 cu. ft. Specialty Refrigerator (30" Wide)

- 14.3 cu. ft. Capacity
- Cooling Care System with Freshness Guard Covers
- Multi Storage Mode (left and right compartments refrigerate fresh food or store kimchi)
- 2 CustomChill™ Drawers with Convertible Temperature Zones
- 14 Storage Bins
- LED Lighting
- LG ThinQ® Technology (Wi-Fi)
- LRKNS1400V – Platinum Silver



SPECIALTY REFRIGERATORS



LRKNS1205V
11.7 cu. ft. Specialty Refrigerator / Freezer (27" Wide)

- 11.7 cu. ft. Capacity
- Freezer / Fridge Convertible
- Cooling Care System with Freshness Guard Covers
- Multi Storage Mode (top compartment refrigerates fresh food, freezes food, or stores kimchi)
- 2 CustomChill™ Drawers with Convertible Temperature Zones
- 10 Storage Bins
- LED Lighting
- SmartDiagnosis™
- LRKNS1205V – Platinum Silver



LRKNC0505V
4.5 cu. ft. Specialty Refrigerator / Freezer (27" Wide)

- 4.5 cu. ft. Capacity
- Freezer / Fridge Convertible
- Cooling Care System with Freshness Guard Cover
- 6 Storage Bins
- SmartDiagnosis™
- LRKNC0505V – Platinum Silver

REFRIGERATION KEY DIMENSIONS AND INSTALLATION REQUIREMENTS

Model / Color	Product Dimensions (W x H x D) Does Not Include Hinge or Handles	Installation Clearances	Installation Requirements
French Door Refrigerators			
SRFVC2416S – PrintProof™ Stainless Steel	35 3/4" x 68 7/8" x 28 3/8"	Sides 1/8", Top 1", Back 2"	Required Power Supply: 115 V, 60 Hz, 15 Amp; Plug Type: 3-Prong; Power Cord Location: Top
LRFVS3006S – PrintProof™ Stainless Steel LRFVS3006D – PrintProof™ Black Stainless Steel	35 3/4" x 68 7/8" x 34 1/8"	Sides 1/8", Top 1", Back 2"	Required Power Supply: 115 V, 60 Hz, 15 Amp; Plug Type: 3-Prong; Power Cord Location: Top
LRFVC2406S – PrintProof™ Stainless Steel LRFVC2406D – PrintProof™ Black Stainless Steel	35 3/4" x 68 7/8" x 28 1/4"	Sides 1/8", Top 1", Back 2"	Required Power Supply: 115 V, 60 Hz, 15 Amp; Plug Type: 3-Prong; Power Cord Location: Top
LRFDC2406S – PrintProof™ Stainless Steel LRFDC2406D – PrintProof™ Black Stainless Steel	35 3/4" x 68 7/8" x 28 1/4"	Sides 1/8", Top 1", Back 2"	Required Power Supply: 115 V, 60 Hz, 15 Amp; Plug Type: 3-Prong; Power Cord Location: Top
LRFDS3016S – PrintProof™ Stainless Steel LRFDS3016D – PrintProof™ Black Stainless Steel	35 3/4" x 68 7/8" x 34 1/8"	Sides 1/8", Top 1", Back 2"	Required Power Supply: 115 V, 60 Hz, 15 Amp; Plug Type: 3-Prong; Power Cord Location: Top
LRFXC2416S – PrintProof™ Stainless Steel LRFXC2416D – PrintProof™ Black Stainless Steel	35 3/4" x 68 7/8" x 28 1/4"	Sides 1/8", Top 1", Back 2"	Required Power Supply: 115 V, 60 Hz, 15 Amp; Plug Type: 3-Prong; Power Cord Location: Top
LFXS26596S – PrintProof™ Stainless Steel LFXS26596D – PrintProof™ Black Stainless Steel	35 3/4" x 68 1/2" x 32 3/8"	Sides 1/8", Top 1", Back 2"	Required Power Supply: 115 V, 60 Hz, 15 Amp; Plug Type: 3-Prong; Power Cord Location: Back
LFXC22596S – PrintProof™ Stainless Steel LFXC22596D – PrintProof™ Black Stainless Steel	35 3/4" x 68 1/2" x 28 3/4"	Sides 1/8", Top 1", Back 2"	Required Power Supply: 115 V, 60 Hz, 15 Amp; Plug Type: 3-Prong; Power Cord Location: Back
LFXS28968S – PrintProof™ Stainless Steel LFXS28968D – PrintProof™ Black Stainless Steel	35 3/4" x 68 3/8" x 33 3/4"	Sides 1/8", Top 1", Back 2"	Required Power Supply: 115 V, 60 Hz, 15 Amp; Plug Type: 3-Prong; Power Cord Location: Back
LRFXS2503S – PrintProof™ Stainless Steel LRFXS2503D – PrintProof™ Black Stainless Steel	32 3/4" x 68 5/8" x 33"	Sides 1/8", Top 1", Back 2"	Required Power Supply: 115 V, 60 Hz, 15 Amp; Plug Type: 3-Prong; Power Cord Location: Back
LFXC22526S – PrintProof™ Stainless Steel LFXC22526D – PrintProof™ Black Stainless Steel	35 3/4" x 68 1/2" x 28 3/4"	Sides 1/8", Top 1", Back 2"	Required Power Supply: 115 V, 60 Hz, 15 Amp; Plug Type: 3-Prong; Power Cord Location: Back

REFRIGERATION KEY DIMENSIONS AND INSTALLATION REQUIREMENTS

Model / Color	Product Dimensions (W x H x D) Does Not Include Hinge or Handles	Cutout Dimensions (W x H x D)	Installation Requirements
French Door Refrigerators			
LFXS26973S – PrintProof™ Stainless Steel LFXS26973D – PrintProof™ Black Stainless Steel	35 3/4" x 68 1/2" x 32 3/8"	Sides 1/8", Top 1", Back 2"	Required Power Supply: 115 V, 60 Hz, 15 Amp; Plug Type: 3-Prong; Power Cord Location: Back
LFCS27596S – PrintProof™ Stainless Steel	35 3/4" x 68 3/8" x 32 3/8"	Sides 1/8", Top 1", Back 2"	Required Power Supply: 115 V, 60 Hz, 15 Amp; Plug Type: 3-Prong; Power Cord Location: Back
LFCC23596S – PrintProof™ Stainless Steel	35 3/4" x 68 3/8" x 28 3/4"	Sides 1/8", Top 1", Back 2"	Required Power Supply: 115 V, 60 Hz, 15 Amp; Plug Type: 3-Prong; Power Cord Location: Back
LFDS22520S – Stainless Steel	29 3/4" x 67 1/4" x 33"	Sides 1/8", Top 1", Back 2"	Required Power Supply: 115 V, 60 Hz, 15 Amp; Plug Type: 3-Prong; Power Cord Location: Back
LRFCS2503S – PrintProof™ Stainless Steel	32 3/4" x 68 1/2" x 33 1/4"	Sides 1/8", Top 1", Back 2"	Required Power Supply: 115 V, 60 Hz, 15 Amp; Plug Type: 3-Prong; Power Cord Location: Back
LFCC22426S – PrintProof™ Stainless Steel	35 3/4" x 68 3/8" x 28 3/4"	Sides 1/8", Top 1", Back 2"	Required Power Supply: 115 V, 60 Hz, 15 Amp; Plug Type: 3-Prong; Power Cord Location: Back
LRFWS2906V – Stainless Look LRFWS2906S – PrintProof™ Stainless Steel LRFWS2906D – PrintProof™ Black Stainless Steel	35 3/4" x 68 1/2" x 33 3/4"	Sides 1/8", Top 1", Back 2"	Required Power Supply: 115 V, 60 Hz, 15 Amp; Plug Type: 3-Prong; Power Cord Location: Back
LFC22770ST – Stainless Steel	29 3/4" x 67 1/4" x 33"	Sides 1/8", Top 1", Back 2"	Required Power Supply: 115 V, 60 Hz, 15 Amp; Plug Type: 3-Prong; Power Cord Location: Back
LFCS22520S – Stainless Steel LFCS22520D – PrintProof™ Black Stainless Steel	29 3/4" x 67 1/4" x 33"	Sides 1/8", Top 1", Back 2"	Required Power Supply: 115 V, 60 Hz, 15 Amp; Plug Type: 3-Prong; Power Cord Location: Back
French Door Refrigerators, 4-Door			
URNTS3106N – Textured Steel™	35 7/8" x 69" x 36 5/8"	Sides 2", Top 2", Back 2"	Required Power Supply: 115 V, 60 Hz, 15 Amp; Plug Type: 3-Prong; Power Cord Location: Back
URNTC2306N – Textured Steel™	35 7/8" x 69" x 29 3/4"	Sides 2", Top 2", Back 2"	Required Power Supply: 115 V, 60 Hz, 15 Amp; Plug Type: 3-Prong; Power Cord Location: Back
LRMVS3006S – PrintProof™ Stainless Steel LRMVS3006D – PrintProof™ Black Stainless Steel	35 3/4" x 69" x 35 3/4"	Sides 1/8", Top 1", Back 2"	Required Power Supply: 115 V, 60 Hz, 15 Amp; Plug Type: 3-Prong; Power Cord Location: Top
LRMVC2306S – PrintProof™ Stainless Steel LRMVC2306D – PrintProof™ Black Stainless Steel	35 3/4" x 69" x 28 7/8"	Sides 1/8", Top 1", Back 2"	Required Power Supply: 115 V, 60 Hz, 15 Amp; Plug Type: 3-Prong; Power Cord Location: Top

REFRIGERATION KEY DIMENSIONS AND INSTALLATION REQUIREMENTS

Model / Color	Product Dimensions (W x H x D) Does Not Include Hinge or Handles	Installation Clearances	Installation Requirements
French Door Refrigerators, 4-Door			
LRMDS3006S – PrintProof™ Stainless Steel LRMDS3006D – PrintProof™ Black Stainless Steel	35 3/4" x 69" x 35 3/4"	Sides 1/8", Top 1", Back 2"	Required Power Supply: 115 V, 60 Hz, 15 Amp; Plug Type: 3-Prong; Power Cord Location: Top
LRMDC2306S – PrintProof™ Stainless Steel LRMDC2306D – PrintProof™ Black Stainless Steel	35 3/4" x 69" x 28 7/8"	Sides 1/8", Top 1", Back 2"	Required Power Supply: 115 V, 60 Hz, 15 Amp; Plug Type: 3-Prong; Power Cord Location: Top
LRMVS2806S – PrintProof™ Stainless Steel LRMVS2806D – PrintProof™ Black Stainless Steel	35 3/4" x 68 1/2" x 33 3/4"	Sides 1/8", Top 1", Back 2"	Required Power Supply: 115 V, 60 Hz, 15 Amp; Plug Type: 3-Prong; Power Cord Location: Back
LMXS28596S – PrintProof™ Stainless Steel LMXS28596D – PrintProof™ Black Stainless Steel	35 3/4" x 68 1/2" x 33 3/4"	Sides 1/8", Top 1", Back 2"	Required Power Supply: 115 V, 60 Hz, 15 Amp; Plug Type: 3-Prong; Power Cord Location: Back
LRMXC2206S – PrintProof™ Stainless Steel LRMXC2206D – PrintProof™ Black Stainless Steel	35 3/4" x 68 1/2" x 28 3/4"	Sides 1/8", Top 1", Back 2"	Required Power Supply: 115 V, 60 Hz, 15 Amp; Plug Type: 3-Prong; Power Cord Location: Back
LRMXS2806S – PrintProof™ Stainless Steel LRMXS2806D – PrintProof™ Black Stainless Steel	35 3/4" x 68 1/2" x 33 3/4"	Sides 1/8", Top 1", Back 2"	Required Power Supply: 115 V, 60 Hz, 15 Amp; Plug Type: 3-Prong; Power Cord Location: Back
LMXC22626S – Stainless Steel LMXC22626D – Black Stainless Steel	35 3/4" x 68 1/2" x 28 3/4"	Sides 1/8", Top 1", Back 2"	Required Power Supply: 115 V, 60 Hz, 15 Amp; Plug Type: 3-Prong; Power Cord Location: Back
LMXS28626S – PrintProof™ Stainless Steel LMXS28626D – Black Stainless Steel	35 3/4" x 68 1/2" x 33 3/4"	Sides 1/8", Top 1", Back 2"	Required Power Supply: 115 V, 60 Hz, 15 Amp; Plug Type: 3-Prong; Power Cord Location: Back
LMWC23626S – PrintProof™ Stainless Steel	35 3/4" x 68 3/8" x 28 5/8"	Sides 1/8", Top 1", Back 2"	Required Power Supply: 115 V, 60 Hz, 15 Amp; Plug Type: 3-Prong; Power Cord Location: Back
LMWS27626S – PrintProof™ Stainless Steel	35 3/4" x 68 3/8" x 32 3/8"	Sides 1/8", Top 1", Back 2"	Required Power Supply: 115 V, 60 Hz, 15 Amp; Plug Type: 3-Prong; Power Cord Location: Back

REFRIGERATION KEY DIMENSIONS AND INSTALLATION REQUIREMENTS

Model / Color	Product Dimensions (W x H x D) Does Not Include Hinge or Handles	Installation Clearances	Installation Requirements
Side-by-Side Refrigerators			
SRSXB2622S – PrintProof™ Stainless Steel	42" x 83 1/2" x 25 3/8"	Sides 1/4", Top 1/4", Back 1/6" Cutout Dimensions: 41 1/2" x 83 3/4" x 24"	Required Power Supply: 115 V, 60 Hz, 15 Amp; Plug Type: 3-Prong; Power Cord Location: Top
LSXC22396S – Stainless Steel	35 15/16" x 68 7/8" x 29 7/16"	Sides 1/8", Top 1", Back 2"	Required Power Supply: 115 V, 60 Hz, 15 Amp; Plug Type: 3-Prong; Power Cord Location: Top
LSXS26396S – Stainless Steel	35 15/16" x 68 7/8" x 33 3/8"	Sides 1/8", Top 1", Back 2"	Required Power Supply: 115 V, 60 Hz, 15 Amp; Plug Type: 3-Prong; Power Cord Location: Top
LSXC22426S – Stainless Steel	35 15/16" x 68 7/8" x 29 7/16"	Sides 1/8", Top 1", Back 2"	Required Power Supply: 115 V, 60 Hz, 15 Amp; Plug Type: 3-Prong; Power Cord Location: Top
LRSES2706V – Stainless Look	35 15/16" x 68 7/8" x 33 3/8"	Sides 1/8", Top 1", Back 2"	Required Power Supply: 115 V, 60 Hz, 15 Amp; Plug Type: 3-Prong; Power Cord Location: Top
LRSES2706V – Stainless Look	35 15/16" x 68 7/8" x 33 3/8"	Sides 1/8", Top 1", Back 2"	Required Power Supply: 115 V, 60 Hz, 15 Amp; Plug Type: 3-Prong; Power Cord Location: Top
LSXS26326S – Stainless Steel	35 15/16" x 68 7/8" x 33 3/8"	Sides 1/8", Top 1", Back 2"	Required Power Supply: 115 V, 60 Hz, 15 Amp; Plug Type: 3-Prong; Power Cord Location: Top
LRSPS2706V – Stainless Look	35 15/16" x 68 7/8" x 33 3/8"	Sides 1/8", Top 1", Back 2"	Required Power Supply: 115 V, 60 Hz, 15 Amp; Plug Type: 3-Prong; Power Cord Location: Top

REFRIGERATION KEY DIMENSIONS AND INSTALLATION REQUIREMENTS

Model / Color	Product Dimensions (W x H x D) Does Not Include Hinge or Handles	Installation Clearances	Installation Requirements
Top Freezer Refrigerators			
LRTLS2403S – Stainless Steel	33" x 68" x 34"	Sides 2", Top 2", Back 2"	Required Power Supply: 115 V, 60 Hz, 15 Amp; Plug Type: 3-Prong; Power Cord Location: Back
LTWS24223S – Stainless Steel	32 3/4" x 67 7/8" x 33 3/8"	Sides 2", Top 2", Back 2"	Required Power Supply: 115 V, 60 Hz, 15 Amp; Plug Type: 3-Prong; Power Cord Location: Back
LTCS24223S – Stainless Steel LTCS24223W – Smooth White	32 3/4" x 67 7/8" x 33 3/8"	Sides 2", Top 2", Back 2"	Required Power Supply: 115 V, 60 Hz, 15 Amp; Plug Type: 3-Prong; Power Cord Location: Back
LTCS20030S – Stainless Steel	29 3/4" x 65 1/2" x 33 3/8"	Sides 2", Top 2", Back 2"	Required Power Supply: 115 V, 60 Hz, 15 Amp; Plug Type: 3-Prong; Power Cord Location: Back
LTCS20020S – Stainless Steel LTCS20020W – Smooth White LTCS20020W – Smooth Black	29 3/4" x 65 1/2" x 33 3/8"	Sides 2", Top 2", Back 2"	Required Power Supply: 115 V, 60 Hz, 15 Amp; Plug Type: 3-Prong; Power Cord Location: Back
LTNC11131V – Stainless Look	24" x 65 1/2" x 26"	Sides 2", Top 2", Back 2"	Required Power Supply: 115 V, 60 Hz, 15 Amp; Plug Type: 3-Prong; Power Cord Location: Back
Bottom Freezer Refrigerators			
LRDCS2603S – PrintProof™ Stainless Steel LRDCS2603D – PrintProof™ Black Stainless Steel	32 3/4" x 68 5/8" x 33"	Sides 1/8", Top 1", Back 2"	Required Power Supply: 115 V, 60 Hz, 15 Amp; Plug Type: 3-Prong; Power Cord Location: Back
LBNC15231V – Stainless Look	27 5/8" x 66 1/8" x 27 5/8"	Sides 2", Top 1", Back 2"	Required Power Supply: 115 V, 60 Hz, 15 Amp; Plug Type: 3-Prong; Power Cord Location: Top
LRBCC1204S – PrintProof™ Stainless Steel	23 1/2" x 73 1/4" x 26 5/8"	Sides 2", Top 2", Back 2"	Required Power Supply: 115 V, 60 Hz, 15 Amp; Plug Type: 3-Prong; Power Cord Location: Back
LRBNC1104S – PrintProof™ Stainless Steel	23 1/2" x 67 3/4" x 26 5/8"	Sides 2", Top 1", Back 2"	Required Power Supply: 115 V, 60 Hz, 15 Amp; Plug Type: 3-Prong; Power Cord Location: Back
Specialty Refrigerators			
URETC1408N – Textured Steel™	27 9/16" x 69 1/16" x 28 15/16"	Sides 2", Top 2", Back 2"	Required Power Supply: 115 V, 60 Hz, 15 Amp; Plug Type: 3-Prong; Power Cord Location: TBD
LRKNS1400V – Platinum Silver	29 1/2" x 70" x 31 1/2"	Back 2"	Required Power Supply: 115 V, 60 Hz, 15 Amp; Plug Type: 3-Prong; Power Cord Location: Top
LRKNS1205V – Platinum Silver	26 1/4" x 69 3/8" x 29"	Back 2"	Required Power Supply: 115 V, 60 Hz, 15 Amp; Plug Type: 3-Prong; Power Cord Location: Top
LRKNC0505V – Platinum Silver	26 1/4" x 35 7/16" x 24"	Back 2"	Required Power Supply: 115 V, 60 Hz, 15 Amp; Plug Type: 3-Prong; Power Cord Location: Back

REFRIGERATION ACCESSORIES

Model	Description	For Use With
 LT1000P	Replacement Water Filter	SRFVC2416S, LRMVS3006_, LRMVC2306_, LRFVS3006_, LRFVC2406_, LRMVS2806_, LMXS28596_, LFXS26596_, LFXC22596_, LRMDS3006_, LRMDC2306_, LRMXS2806_, LRMXC2206_, LRFDS3016_, LRFDC2406_, LRFXC2416_, LMXS28626_, LMXC22626_, LFXS28968_, LFXC22526_, LFXS26973_, LRFXS2503_, LFC227596S, LFCC23596S, LMWS27626S, LFCC22426S, LRFCS2503S, LFDS22520S, LRFWS2906_, LFC22770ST, LMWC23626S
 LT120F	Replacement Fresh Air Filter	URNTS3106N, URNTC2306N, SRFVC2416S, LRMVS3006_, LRMVC2306_, LRFVS3006_, LRFVC2406_, LRMVS2806_, LMXS28596_, LFXS26596_, LFXC22596_, LRMDS3006_, LRMDC2306_, LRMXS2806_, LRMXC2206_, LRFDS3016_, LRFDC2406_, LRFXC2416_, LMXS28626_, LMXC22626_, LFXS28968_, LFXC22526_, LFXS26973_, LRFXS2503_, LFC227596S, LFCC23596S, LMWS27626S, LFCC22426S, LRFCS2503S, LFDS22520S, LRFWS2906_, LFC22770ST, LSXC22396S, LSXS26396S
 LT700P	Replacement Water Filter	SRSXB2622S
 LT800P	Replacement Water Filter	URNTS3106N, URNTC2306N, LSXS26366_, LSXC22426S, LSXS26326S
 LT1000P	Replacement Water Filter	LSXC22396S, LSXS26396S, LRDCS2603_
 LT500P	Replacement Water Filter	LRTLS2403S, LTCS24223_, LTWS24223S



DISHWASHERS

DISHWASHER FEATURES



TrueSteam® with Sanitization

LG TrueSteam® uses the power of steam to penetrate food residue and help eliminate water spots by up to 60%*. Plus, LG dishwashers are certified by the National Sanitization Foundation to reduce bacteria on dishes by 99.999% and reach a final rinse temperature greater than 150°F when operated on the Steam cycle** for peace of mind.

Dynamic Dry™

Creating a dynamic table begins with sparkling dishes and glassware—the kind only Dynamic Dry™ enhanced with TrueSteam® can deliver. From thoroughly drying to eliminating water spots from wine glasses, you can throw in the towel and stop drying by hand.

QuadWash™

Achieve maximum cleaning throughout the entire cycle with LG QuadWash™. With four spray arms instead of two, QuadWash™ also includes Multi-Motion arms that rotate back and forth while spinning. The high pressure jets power-clean dishes from multiple angles.

Height Adjustable 3rd Rack

The convenient 3rd rack holds more items so you can save time and wash fewer loads. From flatware to long-handled utensils to small espresso cups, items that may otherwise need to be washed by hand finally have their place in the dishwasher. Use the handy slider to adjust the 3rd rack height—even when fully loaded—to make room for taller items at the last minute.



*Percent in water spot reduction compared to comparable LG non-steam dishwasher on delicate wash cycle. Results may vary by model. Results based on test with LG LDF7745T as of Feb. 2018.
 **LG TrueSteam Dishwashers certified by NSF achieve a minimum 99.999 percent reduction of bacteria when operated on the Steam cycle.

DISHWASHER FEATURES

Smooth Gliding Racks

Why waste time fighting a dishwasher rack that goes off track, especially when you're in a hurry? Even your heaviest dish loads glide in and out smoothly with the help of LG's Glide Rail and Ball Bearing Wheel design. The Glide Rail keeps the upper rack on track while the Ball-bearing wheel provides a smooth lower rack glide for easier loading and unloading.

EasyRack™ Plus

EasyRack™ Plus lets you fit more dishes, run fewer loads and make short work of after-dinner cleanup. With three height settings, the upper rack adjusts effortlessly and smoothly to make room for tall stemware on top or oversize pans below. Customizable tines offer greater flexibility for loading dishes of all shapes and sizes without compromising cleaning performance.

Advanced Filtration System

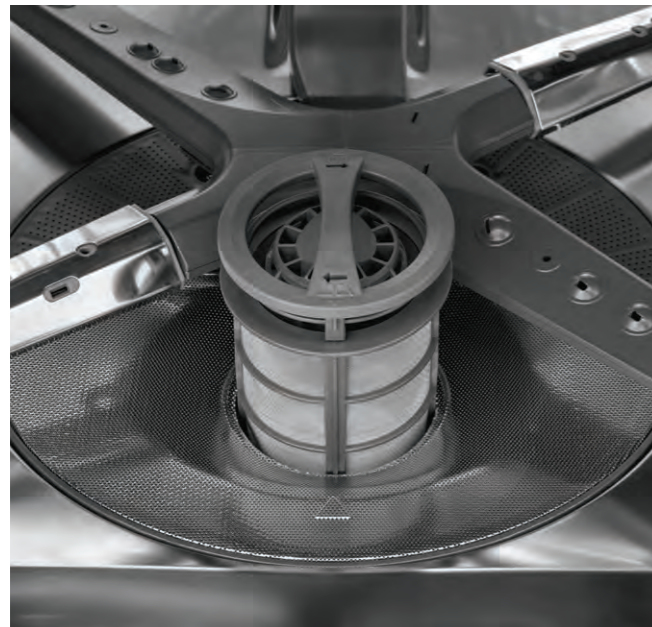
LG's advanced filtration system is tough on food residue and dirty dishes even if you don't pre-wash. Plus its advanced design makes it extremely efficient and quiet.

Quiet Operation

LG's technological advances, like the Inverter Direct Drive motor and the advanced 3-stage filtration system, were designed with quiet in mind.

LG ThinQ® Technology (Smart Wi-Fi Enabled)

LG smart dishwashers come with ThinQ® technology built-in so you can get smartphone notifications when a cycle is complete. You can even check on the cycle status with voice commands using the Google Assistant and Amazon Alexa, so you don't have to lift a finger.



DISHWASHERS



LG SIGNATURE



LUDP8908SN

Top Control TrueSteam® Dishwasher with QuadWash™

- QuadWash™ and TrueSteam®
- Height Adjustable 3rd Rack
- EasyRack™ Plus
- Smooth Operating Racks
- Dual Zone Wash
- LoDecibel™ Quiet Operation (38 dBA)
- Inverter Direct Drive™ Technology
- LED Tub Light
- NeveRust™ Stainless Steel Tub
- LG ThinQ® Technology (Wi-Fi)

- LUDP8908SN – Textured Steel™



LG STUDIO



LSDTS9882S

Top Control TrueSteam® Dishwasher with QuadWash™

- QuadWash™ and TrueSteam®
- Height Adjustable 3rd Rack
- EasyRack™ Plus
- Smooth Operating Racks
- LoDecibel™ Quiet Operation (40 dBA)
- Inverter Direct Drive™ Technology
- LED Tub Light
- NeveRust™ Stainless Steel Tub
- LG ThinQ® Technology (Wi-Fi)

- LSDTS9882S – PrintProof™ Stainless Steel



LDT7808_

Top Control Dishwasher with QuadWash™ and TrueSteam®

- QuadWash™ and TrueSteam®
- Height Adjustable 3rd Rack
- EasyRack™ Plus
- Smooth Operating Racks
- LoDecibel™ Quiet Operation (42dBA)
- Inverter Direct Drive™ Technology
- LED Tub Light
- NeveRust™ Stainless Steel Tub
- LG ThinQ® Technology (Wi-Fi)

- LDT7808SS – PrintProof™ Stainless Steel
- LDT7808BD – PrintProof™ Black Stainless Steel



LDP7808_

Top Control TrueSteam® Dishwasher with Quadwash™

- QuadWash™ and TrueSteam®
- Height Adjustable 3rd Rack
- EasyRack™ Plus
- Smooth Operating Racks
- LoDecibel™ Quiet Operation (42dBA)
- Inverter Direct Drive™ Technology
- LED Tub Light
- NeveRust™ Stainless Steel Tub
- LG ThinQ® Technology (Wi-Fi)

- LDP7808SS – PrintProof™ Stainless Steel
- LDP7808BD – PrintProof™ Black Stainless Steel

End-of-Life Q3 2021; Available in limited quantities, contact your LG Sales Rep for details

DISHWASHERS



- LDP6810_**
Top Control TrueSteam® Dishwasher with QuadWash™
- QuadWash™ and TrueSteam®
 - Height Adjustable 3rd Rack
 - Smooth Glide Rail Upper Rack
 - LoDecibel™ Quiet Operation (44 dB)
 - NeveRust™ Stainless Steel Tub
 - LG ThinQ® Technology (Wi-Fi)
- LDP6810SS – PrintProof™ Stainless Steel
 - LDP6810BD – PrintProof™ Black Stainless Steel



- LDT5552_**
Top Control Dishwasher with QuadWash™
- QuadWash™
 - TrueSteam® with Sanitization
 - Dynamic Dry™ Enhanced with TrueSteam®
 - PrintProof™ Finish
 - 3rd Rack
 - LoDecibel™ Quiet Operation (46 dB)
 - Top Control Panel With LED Display
 - LG ThinQ® Technology (Wi-Fi)
- LDT5552S – PrintProof™ Stainless Steel
 - LDT5552D – PrintProof™ Black Stainless Steel



- LDT5678_**
Top Control Dishwasher with Quadwash™
- QuadWash™
 - 3rd Rack
 - EasyRack™ Plus
 - SenseClean™ Wash System
 - LoDecibel™ Quiet Operation (46 dBA)
 - Inverter Direct Drive™ Technology
 - NeveRust™ Stainless Steel Tub
 - LG ThinQ® Technology (Wi-Fi)
- LDT5678SS – PrintProof™ Stainless Steel
 - LDT5678BD – PrintProof™ Black Stainless Steel



Transitioning to LDT5552SS/BD Q3 2021; Available in limited quantities, contact your LG Sales Rep for details



- ADFD5448AT**
Front Control ADA Dishwasher with QuadWash™
- QuadWash™
 - EasyRack™ Plus
 - Auto Open Dry
 - LoDecibel™ Quiet Operation (48dBA)
 - Inverter Direct Drive™ Technology
 - NeveRust™ Stainless Steel Tub
 - LG ThinQ® Technology (Wi-Fi)
- ADFD5448AT – Stainless Steel



DISHWASHERS



- LDB4548ST**
Top Control Dishwasher with Quadwash™
- QuadWash™
 - EasyRack™ Plus
 - SenseClean™ Wash System
 - LoDecibel™ Quiet Operation (48 dBA)
 - Inverter Direct Drive™ Technology
 - NeveRust™ Stainless Steel Tub
 - NFC Tag On Technology
- LDB4548ST – Stainless Steel



- LDFN4542_**
Front Control Dishwasher with Quadwash™
- QuadWash™
 - 3rd Rack
 - EasyRack™ Plus
 - 15 Place Settings
 - NeveRust™ Stainless Steel Tub
 - LoDecibel™ Operation (48 dB)
 - NFC Tag On Technology
- LDFN4542S – PrintProof™ Stainless Steel
 - LDFN4542D – PrintProof™ Black Stainless Steel
 - LDFN4542W – White
 - LDFN4542B – Black



- LDFN3432T**
Front Control Dishwasher
- 15 Place Settings
 - 5 Cycles, 6 Options
 - Dynamic Dry™
 - NeveRust™ Stainless Steel Tub
 - LoDecibel™ Operation (50 dB)
- LDFN3432T – Stainless Steel



DISHWASHER KEY DIMENSIONS AND INSTALLATION REQUIREMENTS

Model / Color	Product Dimensions (W x H x D – Depth Does Not Include Handle)	Cutout Dimensions (W x H x D)	Installation Requirements
LUDP8908SN – Textured Steel™	23 3/4" x 33 5/8" x 24 5/8" Adj. Height: Min. 33 5/8" (Front) – Max. 36"	24" x 33 5/8" Min. – 36" Max. x 24"	Electrical Requirements: 120V, 60 Hz, 15 Amps; Power Outlet Location: Within 48" of Either Side; Power / Plug Type: 3-Wire Cable Required; Drain Location: Within 12 ft. of Sink
LSDT59882S – PrintProof™ Stainless Steel	23 3/4" x 33 5/8" x 24 5/8" Adj. Height: Min. 33 5/8" (Front) – Max. 36"	24" x 33 5/8" Min. – 36" Max. x 24"	Electrical Requirements: 120V, 60 Hz, 15 Amps; Power Outlet Location: Within 48" of Either Side; Power / Plug Type: 3-Wire Cable Required; Drain Location: Within 12 ft. of Sink
LDT7808SS – PrintProof™ Stainless Steel LDT7808BD – Black Stainless Steel	23 3/4" x 33 5/8" x 24 5/8" Adj. Height: Min. 33 5/8" (Front) – Max. 36"	24" x 33 5/8" Min. – 36" Max. x 24"	Electrical Requirements: 120V, 60 Hz, 15 Amps; Power Outlet Location: Within 48" of Either Side; Power / Plug Type: 3-Wire Cable Required; Drain Location: Within 12 ft. of Sink
LDP7808SS – PrintProof™ Stainless Steel LDP7808BD – Black Stainless Steel	23 3/4" x 33 5/8" x 24 5/8" Adj. Height: Min. 33 5/8" (Front) – Max. 36"	24" x 33 5/8" Min. – 36" Max. x 24"	Electrical Requirements: 120V, 60 Hz, 15 Amps; Power Outlet Location: Within 48" of Either Side; Power / Plug Type: 3-Wire Cable Required; Drain Location: Within 12 ft. of Sink
LDP6810SS – PrintProof™ Stainless Steel LDP6810BD – Black Stainless Steel	23 3/4" x 33 5/8" x 24 5/8" Adj. Height: Min. 33 5/8" (Front) – Max. 36"	24" x 33 5/8" Min. – 36" Max. x 24"	Electrical Requirements: 120V, 60 Hz, 15 Amps; Power Outlet Location: Within 48" of Either Side; Power / Plug Type: 3-Wire Cable Required; Drain Location: Within 12 ft. of Sink
LDT5552S – PrintProof™ Stainless Steel LDT5552D – PrintProof™ Black Stainless Steel	23 3/4" x 33 5/8" x 24 5/8" Adj. Height: Min. 33 5/8" (Front) – Max. 36"	24" x 33 5/8" Min. – 36" Max. x 24"	Electrical Requirements: 120V, 60 Hz, 15 Amps; Power Outlet Location: Within 48" of Either Side; Power / Plug Type: 3-Wire Cable Required; Drain Location: Within 12 ft. of Sink
LDT5678SS – PrintProof™ Stainless Steel LDT5678BD – Black Stainless Steel	23 3/4" x 33 5/8" x 24 5/8" Adj. Height: Min. 33 5/8" (Front) – Max. 36"	24" x 33 5/8" Min. – 36" Max. x 24"	Electrical Requirements: 120V, 60 Hz, 15 Amps; Power Outlet Location: Within 48" of Either Side; Power / Plug Type: 3-Wire Cable Required; Drain Location: Within 12 ft. of Sink
ADFD5448AT – Stainless Steel	23 1/2" x 32 1/16" x 22 1/2"	24" x 32 1/4" x 23 5/8"	Electrical Requirements: 120V, 60 Hz, 15 Amps; Power Outlet Location: Within 47" of Either Side; Power / Plug Type: 3-Prong Power Cord Included; Drain Location: Within 12 ft. of Sink
LDB4548ST – Stainless Steel	23 3/4" x 33 5/8" x 24 5/8" Adj. Height: Min. 33 5/8" (Front) – Max. 36"	24" x 33 5/8" Min. – 36" Max. x 24"	Electrical Requirements: 120V, 60 Hz, 15 Amps; Power Outlet Location: Within 48" of Either Side; Power / Plug Type: 3-Wire Cable Required; Drain Location: Within 12 ft. of Sink
LDFN4542S – PrintProof™ Stainless Steel LDFN4542D – Black Stainless Steel LDFN4542W – White LDFN4542B – Black	23 3/4" x 33 5/8" x 24 5/8" Adj. Height: Min. 33 5/8" (Front) – Max. 36"	24" x 33 5/8" Min. – 36" Max. x 24"	Electrical Requirements: 120V, 60 Hz, 15 Amps; Power Outlet Location: Within 48" of Either Side; Power / Plug Type: 3-Wire Cable Required; Drain Location: Within 12 ft. of Sink
LDFN3432T – Stainless Steel	23 3/4" x 33 5/8" x 24 5/8" Adj. Height: Min. 33 5/8" (Front) – Max. 36"	24" x 33 5/8" Min. – 36" Max. x 24"	Electrical Requirements: 120V, 60 Hz, 15 Amps; Power Outlet Location: Within 48" of Either Side; Power / Plug Type: 3-Wire Cable Required; Drain Location: Within 12 ft. of Sink





COOKING

COOKING FEATURES



Slide-in Design

With a depth that lines up with standard kitchen countertops, LG Electric and Gas Slide-in Ranges offer a streamlined custom appearance that enhances every kitchen décor and makes cooking a pleasure.

Double Oven Ranges

Our 7.3 cu. ft. electric ranges and 6.9 cu. ft. gas ranges have the largest capacity oven in their class*. So you can use all the pots, pans, dutch ovens, skillets you need to get your cook on. Whether you're baking large batches of cookies or a roast for the holidays, this oven can fit it all.

InstaView® Window

Now you can check on food in an instant with two quick knocks. The LG InstaView® window lets you see inside your oven without ever opening the door or reaching over a hot cooktop to flip a switch. That means everyone in the family can quickly and safely keep an eye on what's cooking.

Built-in Air Fry

Air Fry delivers crispy flavor fast with no preheating and makes enough to feed a crowd, with no need to buy yet another gadget that takes up counter space. Just press Air Fry to prepare favorite snacks like French fries, hot wings and more. High temperatures and the convection fan work together to deliver the flavor and crunch you crave without the oil—or the guilt.

Air Sous Vide

Seal in restaurant-quality results with LG Air Sous Vide. Using precise, low oven temperatures and air flow around vacuum sealed ingredients, Air Sous Vide consistently delivers tender and juicy meats, fish and poultry that are cooked to perfection.



*Based on LG internal survey (October 2018) for 6.3 traditional self clean gas & electric single ovens, 6.9 gas double ovens and 7.3 electric double ovens.

COOKING FEATURES

ProBake Convection®

Tired of being burned by inconsistent baking results? Not anymore—LG ProBake Convection® Ranges offer the gold standard in convection technology delivering even baking results on every rack, every time*. Inspired by pro-style ranges, the heating element moved from the bottom of the oven to the back wall for optimal heat distribution. Enjoy consistent browning on top and bottom—with every cookie baked to perfection.

Infrared Heating™ System

When you're craving the thrill of the grill but Mother Nature has other ideas, you can still achieve that characteristic seared flavor with LG's Infrared Heating™ system. The infrared heating element locks in juices while cutting up to 20% off of your cooking time**—with no preheating required.

EasyClean®

LG EasyClean®, the only 10 minute oven cleaning cycle technology, brings you the fastest oven-cleaning feature yet. In three easy steps and 10 quick minutes, your oven can be sparkling clean, without strong chemical fumes or high heat†.

Gliding Rack

LG's gliding rack brings the dish to you, extending your reach with far less effort. It offers easy access for checking on or taking out your favorite dishes from the oven.

LG ThinQ® Technology (Smart Wi-Fi Enabled)

Begin preheating the oven from the office and get a jump-start on that perfectly planned meal. Designed with the connected home in mind, you can even activate the timer with a simple voice command, since LG SmartThinQ® technology works with Google Assistant and Amazon Alexa.



*Compared to LG's conventional ovens †Among major leading appliance brands as surveyed in June 2017. Heavy build-up may require additional manual effort or use of the full self-clean feature.
**Compared to LG's non-infrared heating ovens using chicken breasts, hamburgers, and salmon.

COOKING FEATURES



UltraHeat™ Power Burners

Busy cooks, rejoice: LG UltraHeat™ burners deliver every bit of the precision you love about gas with even more power. No more waiting around to bring water and other liquids to a boil.

3-in-1 Design, Unlimited Flexibility

No matter what's on the menu, the LG 3-in-1 element is up for the challenge. Go from 12" to 9" to 6" with just a turn, for the flexibility to cook a huge pot of chili or simmer a small pan of sauce in the same spot, without having to move pans around.

Induction Cooktop Elements

Induction elements offer speed heating, precision and responsiveness for super-fast water boils and outstanding, scorch-free simmering the chef in you will love.

Wok Grate

Master the art of the wok with LG's Detachable Wok Grate. Designed to lift a wok pan above the right front burner, the steady surface combined with the intense heat of the 18,500 / 20,000 BTU UltraHeat™ burner makes it easier to stir fry, steam, poach and sear. Crafted from cast iron porcelain for years of use.

Griddle

Select ranges are offered with a free griddle pan that fits perfectly on the oval burner. You can start cooking right away—pancakes, eggs, meat, and everything else that can be cooked on a griddle.



GAS & DUAL FUEL SLIDE-IN RANGES



LG SIGNATURE

LUTD4919SN Dual Fuel Double Oven Slide-in Range

- Dual Fuel Range
- ProBake Convection®
- EasyClean® + Self Clean
- 18.5k BTU Power Burner
- Stainless Steel Touch Controls
- Scratch-resistant Finish
- Slide-in Design
- 7.3 cu. ft. Total Capacity
- LG ThinQ® Technology (Wi-Fi)

● LUTD4919SN – Textured Steel™



LG SIGNATURE

LUTG4519SN Gas Double Oven Slide-in Range

- ProBake Convection®
- EasyClean® + Self Clean
- 18.5k BTU Power Burner
- Stainless Steel Touch Controls
- Scratch-resistant Finish
- Slide-in Design
- 6.9 cu. ft. Total Capacity
- LG ThinQ® Technology (Wi-Fi)

● LUTG4519SN – Textured Steel™



LG
STUDIO

LSGS6338F 6.3 cu. ft. Gas Slide-in Range

- InstaView® Window
- Built-in Air Fry
- Built-in Air Sous Vide
- ProBake Convection®
- EasyClean® + Self Clean
- 22k BTU Power Burner
- Glass Touch Controls
- Slide-in Design
- 6.3 cu. ft. Large Capacity
- Soft Close Door
- Storage Drawer
- LG ThinQ® Technology (Wi-Fi)

● LSGS6338F – PrintProof™ Stainless Steel



LTG4715_ 6.9 cu. ft. Gas Double Oven Slide-in Range

- ProBake Convection®
- EasyClean® + Self Clean
- 18.5k BTU Power Burner
- Glass Touch Controls
- Slide-in Design with Double Oven
- 6.9 cu. ft. Large Capacity
- LG ThinQ® Technology (Wi-Fi)

● LTG4715ST – Stainless Steel
● LTG4715BD – PrintProof™ Black Stainless Steel



GAS & DUAL FUEL SLIDE-IN RANGES



LSGL6337_ 6.3 cu. ft. Gas Slide-in Range

- Built-in Air Sous Vide
- Built-in Air Fry
- InstaView® Window
- ProBake Convection®
- EasyClean® + Self Clean
- UltraHeat™ Plus 22k BTU Power Burner
- Slide-in Design
- 6.3 cu. ft. Large Capacity
- Storage Drawer
- LG ThinQ® Technology (Wi-Fi)

● LSGL6337F – PrintProof™ Stainless Steel
● LSGL6337D – PrintProof™ Black Stainless Steel



LSD4913ST 6.3 cu. ft. Dual Fuel Slide-in Range

- Dual Fuel Range
- ProBake Convection®
- EasyClean® + Self Clean
- 18.5k BTU Power Burner
- Glass Touch Controls
- Slide-in Design
- 6.3 cu. ft. Large Capacity
- Storage Drawer
- LG ThinQ® Technology (Wi-Fi)

● LSD4913ST – Stainless Steel



LSGL6335_ 6.3 cu. ft. Gas Slide-in Range

- Built-in Air Fry
- InstaView® Window
- ProBake Convection®
- EasyClean® + Self Clean
- UltraHeat™ 20k BTU Power Burner
- Slide-in Design
- 6.3 cu. ft. Large Capacity
- Storage Drawer
- LG ThinQ® Technology (Wi-Fi)

● LSGL6335F – PrintProof™ Stainless Steel
● LSGL6335D – PrintProof™ Black Stainless Steel



LSGL5833_ 5.8 cu. ft. Gas Slide-in Range

- Built-in Air Fry
- InstaView® Window
- Fan Convection
- EasyClean® + Self Clean
- UltraHeat™ 20k BTU Power Burner
- Slide-in Design
- 5.8 cu. ft. Large Capacity
- Storage Drawer
- LG ThinQ® Technology (Wi-Fi)

● LSGL5833F – PrintProof™ Stainless Steel
● LSGL5833D – PrintProof™ Black Stainless Steel



LSG4511ST 6.3 cu. ft. Gas Slide-in Range – Stainless Steel
End-of-Life Q4 2021; Available in limited quantities, contact your LG Sales Rep for details

GAS FREESTANDING RANGES



LDG4313ST 6.9 cu. ft. Gas Double Oven Range

- ProBake Convection®
 - EasyClean® + Self Clean
 - 18.5k BTU Power Burner
 - Glass Touch Controls
 - Double Oven
 - 6.9 cu. ft. Large Capacity
 - SmartDiagnosis™
- LDG4313ST – Stainless Steel



LRGL5825_ 5.8 cu. ft. Gas Range

- Built-in Air Fry
 - True Convection
 - 5.8 cu. ft. Capacity
 - EasyClean® + Self Clean
 - UltraHeat™ 20k BTU Power Burner
 - LG ThinQ® Technology (Wi-Fi)
- LRGL5825F – PrintProof™ Stainless Steel
● LRGL5825D – PrintProof™ Black Stainless Steel



LRGL5823_ 5.8 cu. ft. Gas Range

- Built-in Air Fry
 - Fan Convection
 - 5.8 cu. ft. Capacity
 - EasyClean® + Self Clean
 - UltraHeat™ 20k BTU Power Burner
 - LG ThinQ® Technology (Wi-Fi)
- LRGL5823S – Stainless Steel
● LRGL5823D – PrintProof™ Black Stainless Steel



LRGL5821S 5.8 cu. ft. Gas Range

- 5.8 cu. ft. Capacity
 - EasyClean®
 - SuperBoil™ 17k BTU Power Burner
 - Storage Drawer
 - LG ThinQ® Technology (Wi-Fi)
- LRGL5821S – Stainless Steel

ELECTRIC SLIDE IN RANGES



LG
STUDIO

LSIS3018SS 6.3 cu. ft. Induction Slide-in Range

- Induction Cooktop
 - ProBake Convection®
 - Infrared Heating™
 - EasyClean® + Self Clean
 - 4.0 kW Power Element
 - Glass Touch Controls
 - Slide-in Design
 - 6.3 cu. ft. Large Capacity
 - Soft Close Warming Drawer
 - LG ThinQ® Technology (Wi-Fi)
- LSIS3018SS – PrintProof™ Stainless Steel



LG
STUDIO

LSES6338F 6.3 cu. ft. Electric Slide-in Range

- InstaView® Window
 - Built-in Air Fry
 - Built-in Air Sous Vide
 - ProBake Convection®
 - EasyClean® + Self Clean
 - 3-in-1 Element
 - Glass Touch Controls
 - Slide-in Design
 - 6.3 cu. ft. Large Capacity
 - Soft Close Door
 - Storage Drawer
 - LG ThinQ® Technology (Wi-Fi)
- LSES6338F – PrintProof™ Stainless Steel



LSE4617ST 6.3 cu. ft. Induction Slide-in Range

- Induction Cooktop
 - ProBake Convection®
 - Infrared Heating™
 - EasyClean® + Self Clean
 - 4.0 kW Power Induction Element
 - Glass Touch Controls
 - Slide-in Design
 - 6.3 cu. ft. Large Capacity
 - Warming Drawer
 - LG ThinQ® Technology (Wi-Fi)
- LSE4617ST – Stainless Steel



LSE4616_ 6.3 cu. ft. Induction Slide-in Range

- Induction Cooktop
 - ProBake Convection®
 - EasyClean® + Self Clean
 - 4.0 kW Power Element
 - Glass Touch Controls
 - Slide-in Design
 - 6.3 cu. ft. Large Capacity
 - Storage Drawer
 - LG ThinQ® Technology (Wi-Fi)
- LSE4616ST – Stainless Steel
● LSE4616BD – PrintProof™ Black Stainless Steel

ELECTRIC SLIDE IN RANGES



LTE4815_

7.3 cu. ft. Electric Double Oven Slide-in Range

- ProBake Convection®
 - EasyClean® + Self Clean
 - Triple Element & Dual Element
 - Glass Touch Controls
 - Slide-in Design with Double Oven
 - 7.3 cu. ft. Largest Capacity
 - LG ThinQ® Technology (Wi-Fi)
- LTE4815ST – Stainless Steel
● LTE4815BD – PrintProof™ Black Stainless Steel



LSEL6337_

6.3 cu. ft. Electric Slide-in Range

- Built-in Air Sous Vide
 - Built-in Air Fry
 - InstaView® Window
 - ProBake Convection®
 - EasyClean® + Self Clean
 - Triple Element & Dual Element
 - Slide-in Design
 - 6.3 cu. ft. Large Capacity
 - Storage Drawer
 - LG ThinQ® Technology (Wi-Fi)
- LSEL6337F – PrintProof™ Stainless Steel
● LSEL6337D – PrintProof™ Black Stainless Steel



LSEL6335_

6.3 cu. ft. Electric Slide-in Range

- Built-in Air Fry
 - InstaView® Window
 - ProBake Convection®
 - EasyClean® + Self Clean
 - Triple Element & Dual Element
 - Slide-in Design
 - 6.3 cu. ft. Large Capacity
 - Storage Drawer
 - LG ThinQ® Technology (Wi-Fi)
- LSEL6335F – PrintProof™ Stainless Steel
● LSEL6335D – PrintProof™ Black Stainless Steel



LSEL6333_

6.3 cu. ft. Electric Slide-in Range

- Built-in Air Fry
 - InstaView® Window
 - Fan Convection
 - EasyClean® + Self Clean
 - 2 Dual Elements
 - Slide-in Design
 - 6.3 cu. ft. Large Capacity
 - Storage Drawer
 - LG ThinQ® Technology (Wi-Fi)
- LSEL6333F – PrintProof™ Stainless Steel
● LSEL6333D – PrintProof™ Black Stainless Steel



LSE4611ST 6.3 cu. ft. Electric Slide-in Range – Stainless Steel
End-of-Life Q4 2021; Available in limited quantities, contact your LG Sales Rep for details

ELECTRIC FREESTANDING RANGES



LDE4413ST

7.3 cu. ft. Electric Double Oven Range

- ProBake Convection®
 - EasyClean® + Self Clean
 - 2 Dual Elements
 - Glass Touch Controls
 - Double Oven
 - 7.3 cu. ft. Largest Capacity
 - SmartDiagnosis™
- LDE4413ST – Stainless Steel



LREL6325_

6.3 cu. ft. Electric Range

- Built-in Air Fry
 - InstaView™ Window
 - True Convection
 - EasyClean® + Self Clean
 - Triple Element & Dual Element
 - 6.3 cu. ft. Large Capacity
 - Storage Drawer
 - LG ThinQ® Technology (Wi-Fi)
- LREL6325F – PrintProof™ Stainless Steel
● LREL6325D – PrintProof™ Black Stainless Steel



LREL6323_

6.3 cu. ft. Electric Range

- Built-in Air Fry
 - Fan Convection
 - 2 Dual Elements
 - EasyClean® + Self Clean
 - 6.3 cu. ft. Large Capacity
 - Storage Drawer
 - LG ThinQ® Technology (Wi-Fi)
- LREL6323S – Stainless Steel
● LREL6323D – PrintProof™ Black Stainless Steel



LREL6321S

6.3 cu. ft. Electric Range

- 2 Dual Elements
 - EasyClean®
 - 6.3 cu. ft. Large Capacity
 - Storage Drawer
 - LG ThinQ® Technology (Wi-Fi)
- LREL6321S – Stainless Steel



WALL OVENS



LSWC307ST Combination Wall Oven

- 1.7 cu. ft. Microwave / Convection / TurboCook™ Oven
- 4.7 cu. ft. Oven with Steam Cooking
- EasyClean® + Self Clean
- True Convection Technology
- 1 Heavy Duty Rack and 2 Gliding Racks
- Temperature Probe
- Glass Touch Controls
- LG ThinQ® Technology (Wi-Fi)

● LSWC307ST – Stainless Steel

LG STUDIO Transitioning to WCES6428F Q4 2021; Available in limited quantities, contact your LG Sales Rep for details



WDES9428F Double Wall Oven

- 9.4 cu. ft. Total Capacity (4.7 cu. ft. Upper & Lower)
- Built-in Steam Sous Vide
- Built-in Air Fry
- EasyClean® + Self Clean
- True Convection Technology
- 4 Heavy Duty Racks and 2 Gliding Racks
- Temperature Probe
- 7" Color LCD Touch Display
- Soft Close Doors
- LG ThinQ® Technology (Wi-Fi)
- Optional Flush Installation

● WDES9428F – PrintProof™ Stainless Steel

LG STUDIO



WSES4728F Single Wall Oven

- 4.7 cu. ft. Capacity
- Built-in Steam Sous Vide
- Built-in Air Fry
- EasyClean® + Self Clean
- True Convection Technology
- 2 Heavy Duty Racks and 1 Gliding Rack
- Temperature Probe
- 7" Color LCD Touch Display
- Soft Close Doors
- LG ThinQ® Technology (Wi-Fi)
- Optional Flush Installation

● WSES4728F – PrintProof™ Stainless Steel

LG STUDIO

WALL OVENS



LWC3063_ Combination Wall Oven

- 1.7 cu. ft. Microwave / Convection / Speed Cook Oven
- 4.7 cu. ft. Oven with Steam Cooking
- EasyClean® + Self Clean
- True Convection Technology
- 2 Heavy Duty Racks and 1 Gliding Rack
- Temperature Probe
- SmoothTouch™ Glass Controls
- LG ThinQ® Technology (Wi-Fi)

● LWC3063ST – Stainless Steel
● LWC3063BD – PrintProof™ Black Stainless Steel



LWD3063_ Double Wall Oven

- 9.4 cu. ft. Total Capacity (4.7 cu. ft. Upper & Lower)
- EasyClean® + Self Clean
- True Convection Technology
- 4 Heavy Duty Racks
- SmoothTouch™ Glass Controls
- SmartDiagnosis™

● LWD3063ST – Stainless Steel
● LWD3063BD – PrintProof™ Black Stainless Steel



LWS3063_ Single Wall Oven

- 4.7 cu. ft. Capacity
- EasyClean® + Self Clean
- True Convection Technology
- 2 Heavy Duty Racks
- SmoothTouch™ Glass Controls
- SmartDiagnosis™ (Tag On Technology)

● LWS3063ST – Stainless Steel
● LWS3063BD – PrintProof™ Black Stainless Steel

GAS COOKTOPS



LSCG367ST
36" Gas Cooktop with UltraHeat™ Burner

- Integrated, Pro-Style Design
- 5 Sealed Burners
- Dual Stacked UltraHeat™ 19,000 BTU Center Burner (900 BTU Simmer)
- LSCG367ST – Stainless Steel
- 3 Heavy-Duty Continuous Cast Iron Grates (Dishwasher Safe)
- Red LED Backlit Metal Knobs
- Griddle Plate Included



LSCG307ST
30" Gas Cooktop with UltraHeat™ Burner

- Integrated, Pro-Style Design
- 5 Sealed Burners
- Dual Stacked UltraHeat™ 19,000 BTU Center Burner (900 BTU Simmer)
- LSCG307ST – Stainless Steel
- 3 Heavy-Duty Continuous Cast Iron Grates (Dishwasher Safe)
- Red LED Backlit Metal Knobs
- Griddle Plate Included



LCG3611_
36" Gas Cooktop with SuperBoil™ Burner

- 5 Sealed Burners
- SuperBoil™ 17,000 BTU Center Burner
- 3 Heavy-Duty Continuous Cast Iron Grates (Dishwasher Safe)
- LCG3611ST – Stainless Steel
- LSCG367BD – Black Stainless Steel



LCG3011_
30" Gas Cooktop with SuperBoil™ Burner

- 5 Sealed Burners
- SuperBoil™ 17,000 BTU Center Burner
- 3 Heavy-Duty Continuous Cast Iron Grates (Dishwasher Safe)
- LCG3011ST – Stainless Steel
- LCG3011BD – Black Stainless Steel

ELECTRIC COOKTOPS



LSCE365ST
36" Electric Cooktop

- Radiant Cooktop with 5 Elements
- Steady Heat Elements
- Triple 12" / 9" / 6" Element
- Bridge Element
- Warming Function
- Premium Stainless Steel Trim
- Intuitive SmoothTouch™ Glass Controls
- LSCE365ST – Black Glass w/Stainless Steel Frame



LSCE305ST
30" Electric Cooktop

- Radiant Cooktop with 5 Elements
- Steady Heat Elements
- Dual 9" / 6" Element
- Warming Function
- Premium Stainless Steel Trim
- Intuitive SmoothTouch™ Glass Controls
- LSCE305ST – Black Glass w/Stainless Steel Frame



LCE3610SB
36" Electric Cooktop

- Radiant Cooktop with 5 Elements
- Steady Heat Elements
- Triple 12" / 9" / 6" Element
- Warming Function
- Intuitive SmoothTouch™ Glass Controls
- LCE3610SB – Black Glass



LCE3010SB
30" Electric Cooktop

- Radiant Cooktop with 5 Elements
- Steady Heat Elements
- Dual 9" / 6" Element
- Warming Function
- Intuitive SmoothTouch™ Glass Controls
- LCE3010SB – Black Glass

OVER-THE-RANGE MICROWAVE OVENS



Transitioning to MHES1748F Q4 2021;
Available in limited quantities, contact
your LG Sales Rep for details



LSMC3086SS

1.7 cu. ft. Over-the-Range Convection Microwave Oven

- 1.7 cu. ft. Oven Capacity
- Convection Technology
- SmoothTouch™ Glass Controls + Knob
- 950 Watt Microwave Power
- 1,500 Watt Convection Power
- Sensor Cooking
- 5 Power Levels
- 6 Auto Cook Options
- 300 CFM Exhaust Fan
- Stainless Steel Interior
- Halogen Lighting
- Rack for 2-Level Cooking
- SmartDiagnosis™

- LSMC3086SS – PrintProof™ Stainless Steel



LMVH1711_

1.7 cu. ft. Over the Range Convection Microwave Oven

- 1.7 cu. ft. Oven Capacity
- Convection Technology
- SmoothTouch™ Glass Controls
- 950 Watt Microwave Power
- 1,650 Watt Convection Power
- Sensor Cooking
- 10 Power Levels
- 6 Auto Cook Options
- 300 CFM Exhaust Fan
- Stainless Steel Interior
- Halogen Lighting
- Rack for 2-Level Cooking

- LMVH1711ST – Stainless Steel



LMHM2237_

2.2 cu. ft. Over-the-Range Microwave Oven with ExtendaVent™

- 2.2 cu. ft. Oven Capacity
- EasyClean® Interior
- SmoothTouch™ Glass Controls
- Horizontal Control Panel
- 1,000 Watts
- Sensor Cooking
- 10 Power Levels
- 4 Auto Cook Options
- Rack for 2-Level Cooking
- Slide-out ExtendaVent™
- 400 CFM Exhaust Fan
- QuietPower™ Ventilation System

- LMHM2237ST – Stainless Steel
- LMHM2237BD – PrintProof™ Black Stainless Steel



LMH2235ST

2.2 cu. ft. Over-the-Range Microwave Oven with ExtendaVent™

- 2.2 cu. ft. Oven Capacity
- EasyClean® Interior
- SmoothTouch™ Glass Controls
- 1,000 Watts
- Sensor Cooking
- 10 Power Levels
- 4 Auto Cook Options
- Rack for 2-Level Cooking
- Slide-out ExtendaVent™
- 400 CFM Exhaust Fan
- QuietPower™ Ventilation System

- LMH2235ST – Stainless Steel

OVER-THE-RANGE MICROWAVE OVENS



LMVM2033ST

2.0 cu. ft. Over-the-Range Microwave Oven

- 2.0 cu. ft. Oven Capacity
- EasyClean® Interior
- SmoothTouch™ Glass Controls
- Horizontal Control Panel
- 1,000 Watts
- Sensor Cooking
- 10 Power Levels
- 4 Auto Cook Options
- Rack for 2-Level Cooking
- 400 CFM Exhaust Fan
- QuietPower™ Ventilation System

- LMVM2033ST – Stainless Steel



LMV2031_

2.0 cu. ft. Over-the-Range Microwave Oven

- 2.0 cu. ft. Oven Capacity
- EasyClean® Interior
- SmoothTouch™ Glass Controls
- 1,000 Watts
- Sensor Cooking
- 10 Power Levels
- 4 Auto Cook Options
- Rack for 2-Level Cooking
- 400 CFM Exhaust Fan
- QuietPower™ Ventilation System

- LMV2031SS – PrintProof™ Stainless Steel
- LMV2031BD – PrintProof™ Black Stainless Steel
- LMV2031ST – Stainless Steel



LMV1831_

1.8 cu. ft. Over-the-Range Microwave Oven

- 1.8 cu. ft. Oven Capacity
- EasyClean® Interior
- 1,000 Watts
- Sensor Cooking
- 10 Power Levels
- 4 Auto Cook Options
- Rack for 2-Level Cooking
- 300 CFM Exhaust Fan

- LMV1831SS – PrintProof™ Stainless Steel
- LMV1831BD – PrintProof™ Black Stainless Steel
- LMV1831ST – Stainless Steel



LMV1765ST / LMV1764ST

1.7 cu. ft. Over-the-Range Microwave Oven

- 1.7 cu. ft. Oven Capacity
- EasyClean® Interior
- 1,000 Watts
- 10 Power Levels
- 4 Auto Cook Options
- 300 CFM Exhaust Fan

- LMV1765ST – Stainless Steel (1,500W)
- LMV1764ST – Stainless Steel (1,600W)

COUNTERTOP MICROWAVES



Shown with optional trim kit

LMC2075_

2.0 cu. ft. NeoChef™ Countertop Microwave Oven

- 2.0 cu. ft. Oven Capacity
- Smart Inverter
- EasyClean® Interior
- SmoothTouch™ Glass Controls
- 1,200 Watts
- Sensor Cooking
- 10 Power Levels
- Popcorn Key
- Hexagonal Stable Ring
- LED Interior Light
- SmartDiagnosis™
- Optional Built-in Trim Kit

- LMC2075ST – Stainless Steel
- MK2030NST – 30" Stainless Steel Built-in Trim Kit
- LMC2075BD – PrintProof™ Black Stainless Steel
- MK2030NBD – 30" PrintProof™ Black Stainless Steel Built-in Trim Kit

LMC1575_

1.5 cu. ft. NeoChef™ Countertop Microwave Oven

- 1.5 cu. ft. Oven Capacity
- Smart Inverter
- EasyClean® Interior
- SmoothTouch™ Glass Controls
- 1,200 Watts
- Sensor Cooking
- 10 Power Levels
- Popcorn Key
- Hexagonal Stable Ring
- LED Interior Light
- SmartDiagnosis™

- LMC1575ST – Stainless Steel
- LMC1575BD – PrintProof™ Black Stainless Steel

LMC0975ST

0.9 cu. ft. NeoChef™ Countertop Microwave Oven

- 0.9 cu. ft. Oven Capacity
- Smart Inverter
- EasyClean® Interior
- SmoothTouch™ Glass Controls
- 1,000 Watts
- 10 Power Levels
- Popcorn Key
- Hexagonal Stable Ring
- LED Interior Light
- SmartDiagnosis™

- LMC0975ST – Stainless Steel

HOODS



LSHD3680ST / LSHD3080ST

36" / 30" Wall Mount Chimney Hood

- Powerful 600 CFM Blower
 - 5" Low-Profile Body
 - Accommodates Ceilings up to 9' 6"
 - 5-Speed IR Touch Controls
 - Dual Level LED Lighting
 - 2 Decorative Mesh Filters
 - RoHS Compliant
 - LG ThinQ® Technology (Wi-Fi)
- 36" LSHD3680ST – Stainless Steel
 - 30" LSHD3080ST – Stainless Steel

HCED3615_ / HCED3015_

36" / 30" Wall Mount Chimney Hood

- Powerful 600 CFM Blower
 - 5" Low-Profile Body
 - Accommodates Ceilings up to 9' 6"
 - 5-Speed IR Touch Controls
 - Dual Level LED Lighting
 - 2 Decorative Mesh Filters
 - RoHS Compliant
 - LG ThinQ® Technology (Wi-Fi)
- 36" HCED3615S – Stainless Steel
 - 36" HCED3615D – Black Stainless Steel
 - 30" HCED3015S – Stainless Steel
 - 30" HCED3015D – Black Stainless Steel

COOKING KEY DIMENSIONS AND INSTALLATION REQUIREMENTS

Model / Color	Product Dimensions (W x H x D – Depth Includes Handle)	Cutout Dimensions (W x H x D)	Installation Requirements
Gas & Dual Fuel Slide-in Ranges			
LUTD4919SN – Textured Steel™	29 7/8" x 36" x 28 15/16"	30" x 36" x 25"	Required Power Supply: 120 / 208-240 V, 60 Hz, 3-Wire or 4-Wire; Minimum Circuit Rating: 40 Amp; Electrical Receptacle: 4-Wire (14-50R); 3-Wire (10-50R)
LUTG4519SN – Textured Steel™	29 7/8" x 37 7/8" x 28 15/16"	30" x 36" x 25"	Required Power Supply: 120V, 60Hz; Minimum Circuit Rating: 15 Amp; Power Cord Type: 3-Prong, Attached to Unit
LSGS6338F – PrintProof™ Stainless Steel	29 7/8" x 37 1/4" x 29 3/8"	30" x 36" x 25"	Required Power Supply: 120V, 60Hz; Minimum Circuit Rating: 15 Amp; Power Cord Type: 3-Prong, Attached to Unit
LTG4715ST – Stainless Steel LTG4715BD – PrintProof™ Black Stainless Steel	29 7/8" x 37 7/8" x 28 15/16"	30" x 36" x 25"	Required Power Supply: 120V, 60Hz; Minimum Circuit Rating: 15 Amp; Power Cord Type: 3-Prong, Attached to Unit
LSGL6337F – PrintProof™ Stainless Steel LSGL6337D – PrintProof™ Black Stainless Steel	29 7/8" x 37 3/16" x 29 5/16"	30" x 36" x 25"	Required Power Supply: 120V, 60Hz; Minimum Circuit Rating: 15 Amp; Power Cord Type: 3-Prong, Attached to Unit
LSD4913ST – Stainless Steel	29 7/8" x 37 7/8" x 28 15/16"	30" x 36" x 25"	Required Power Supply: 120 / 208-240 V, 60 Hz, 3-Wire or 4-Wire; Minimum Circuit Rating: 40 Amp; Electrical Receptacle: 4-Wire (14-50R); 3-Wire (10-50R)
LSGL6335F – PrintProof™ Stainless Steel LSGL6335D – PrintProof™ Black Stainless Steel	29 7/8" x 37 3/16" x 29 5/16"	30" x 36" x 25"	Required Power Supply: 120V, 60Hz; Minimum Circuit Rating: 15 Amp; Power Cord Type: 3-Prong, Attached to Unit
LSGL5833F – PrintProof™ Stainless Steel LSGL5833D – PrintProof™ Black Stainless Steel	29 7/8" x 37 1/4" x 29 7/32"	30" x 36" x 25"	Required Power Supply: 120V, 60Hz; Minimum Circuit Rating: 15 Amp; Power Cord Type: 3-Prong, Attached to Unit
Gas Freestanding Ranges			
LDG4313ST – Stainless Steel	29 7/8" x 37 1/4" x 28 15/16"	30" x 36" x 25"	Required Power Supply: 120V, 60Hz; Minimum Circuit Rating: 15 Amp; Power Cord Type: 3-Prong, Attached to Unit
LRGL5825F – PrintProof™ Stainless Steel LRGL5825D – PrintProof™ Black Stainless Steel	29 7/8" x 46 1/2" x 28 7/8"	30" x 36" x 25"	Required Power Supply: 120V, 60Hz; Minimum Circuit Rating: 15 Amp; Power Cord Type: 3-Prong, Attached to Unit
LRGL5823S – Stainless Steel LRGL5823D – PrintProof™ Black Stainless Steel	29 7/8" x 46 1/2" x 28 7/8"	30" x 36" x 25"	Required Power Supply: 120V, 60Hz; Minimum Circuit Rating: 15 Amp; Power Cord Type: 3-Prong, Attached to Unit
LRGL5821S – Stainless Steel	29 7/8" x 46 1/2" x 28 7/8"	30" x 36" x 25"	Required Power Supply: 120V, 60Hz; Minimum Circuit Rating: 15 Amp; Power Cord Type: 3-Prong, Attached to Unit

COOKING KEY DIMENSIONS AND INSTALLATION REQUIREMENTS

Model / Color	Product Dimensions (W x H x D – Depth Includes Handle)	Cutout Dimensions (W x H x D)	Installation Requirements
Electric Slide-in Ranges			
LSIS3018SS – PrintProof™ Stainless Steel	29 15/16" x 37 1/10" x 28 15/16"	30" x 36" x 25"	Required Power Supply: 120 / 208-240 V, 60 Hz, 3-Wire or 4-Wire; Minimum Circuit Rating: 40 Amp; Electrical Receptacle: 4-Wire (14-50R); 3-Wire (10-50R)
LSE4617ST – Stainless Steel	29 7/8" x 37 7/8" x 28 15/16"	30" x 36" x 25"	Required Power Supply: 120 / 208-240 V, 60 Hz, 3-Wire or 4-Wire; Minimum Circuit Rating: 40 Amp; Electrical Receptacle: 4-Wire (14-50R); 3-Wire (10-50R)
LSE4616ST – Stainless Steel LSE4616BD – PrintProof™ Black Stainless Steel	29 7/8" x 37 7/8" x 28 15/16"	30" x 36" x 25"	Required Power Supply: 120 / 208-240 V, 60 Hz, 3-Wire or 4-Wire; Minimum Circuit Rating: 40 Amp; Electrical Receptacle: 4-Wire (14-50R); 3-Wire (10-50R)
LSES6338F – PrintProof™ Stainless Steel	29 7/8" x 37 1/4" x 29 3/8"	30" x 36" x 25"	Required Power Supply: 120 / 208-240 V, 60 Hz, 3-Wire or 4-Wire; Minimum Circuit Rating: 40 Amp; Electrical Receptacle: 4-Wire (14-50R); 3-Wire (10-50R)
LTE4815ST – Stainless Steel LTE4815BD – PrintProof™ Black Stainless Steel	29 7/8" x 36" x 28 15/16"	30" x 36" x 25"	Required Power Supply: 120 / 208-240 V, 60 Hz, 3-Wire or 4-Wire; Minimum Circuit Rating: 40 Amp; Electrical Receptacle: 4-Wire (14-50R); 3-Wire (10-50R)
LSEL6337F – PrintProof™ Stainless Steel LSEL6337D – PrintProof™ Black Stainless Steel	29 7/8" x 36 1/2" x 29 9/32"	30" x 36" x 25"	Required Power Supply: 120 / 208-240 V, 60 Hz, 3-Wire or 4-Wire; Minimum Circuit Rating: 40 Amp; Electrical Receptacle: 4-Wire (14-50R); 3-Wire (10-50R)
LSEL6335F – PrintProof™ Stainless Steel LSEL6335D – PrintProof™ Black Stainless Steel	29 7/8" x 36 1/2" x 29 9/32"	30" x 36" x 25"	Required Power Supply: 120 / 208-240 V, 60 Hz, 3-Wire or 4-Wire; Minimum Circuit Rating: 40 Amp; Electrical Receptacle: 4-Wire (14-50R); 3-Wire (10-50R)
LSEL6333F – PrintProof™ Stainless Steel LSEL6333D – PrintProof™ Black Stainless Steel	29 7/8" x 37 1/4" x 29 7/32"	30" x 36" x 25"	Required Power Supply: 120 / 208-240 V, 60 Hz, 3-Wire or 4-Wire; Minimum Circuit Rating: 40 Amp; Electrical Receptacle: 4-Wire (14-50R); 3-Wire (10-50R)
Electric Freestanding Ranges			
LDE4413ST – Stainless Steel	29 15/16" x 47 9/32" x 28 15/16"	30" x 36" x 25"	Required Power Supply: 120 / 208-240 V, 60 Hz, 3-Wire or 4-Wire; Minimum Circuit Rating: 40 Amp; Electrical Receptacle: 4-Wire (14-50R); 3-Wire (10-50R)
LREL6325F – PrintProof™ Stainless Steel LREL6325D – PrintProof™ Black Stainless Steel	29 7/8" x 46 1/2" x 28 7/8"	30" x 36" x 25"	Required Power Supply: 120 / 208-240 V, 60 Hz, 3-Wire or 4-Wire; Minimum Circuit Rating: 40 Amp; Electrical Receptacle: 4-Wire (14-50R); 3-Wire (10-50R)

COOKING KEY DIMENSIONS AND INSTALLATION REQUIREMENTS

Model / Color	Product Dimensions (W x H x D – Depth Includes Handle)	Cutout Dimensions (W x H x D)	Installation Requirements
Electric Freestanding Ranges			
LREL6323S – Stainless Steel LREL6323D – PrintProof™ Black Stainless Steel	29 7/8" x 46 1/2" x 28 7/8"	30" x 36" x 25"	Required Power Supply: 120 / 208-240 V, 60 Hz, 3-Wire or 4-Wire; Minimum Circuit Rating: 40 Amp; Electrical Receptacle: 4-Wire (14-50R); 3-Wire (10-50R)
LREL6321S – Stainless Steel	29 7/8" x 46 1/2" x 28 7/8"	30" x 36" x 25"	Required Power Supply: 120 / 208-240 V, 60 Hz, 3-Wire or 4-Wire; Minimum Circuit Rating: 40 Amp; Electrical Receptacle: 4-Wire (14-50R); 3-Wire (10-50R)
Wall Ovens			
LSWC307ST – Stainless Steel	29 3/4" x 43 13/16" x 27"	28 1/2" x 43 7/16" x 23 1/2"	Required Power Supply: 240 / 208V, 60Hz, 4-Wire; Minimum Circuit Rating: 50 Amp
WDES9428F – PrintProof™ Stainless Steel	29 3/4" x 52 1/16" x 26 29/32"	Min. 28 1/2" x 51 13/16" x 24" Max. 28 5/8" x 51 15/16" x 24"	Required Power Supply: 240 / 208V, 60Hz, 4-Wire; Minimum Circuit Rating: 40 Amp
WSES4728F – PrintProof™ Stainless Steel	29 3/4" x 29 7/16" x 26 29/32"	Min. 28 1/2" x 29 1/8" x 24" Max. 28 5/8" x 29 3/16" x 24"	Required Power Supply: 240 / 208V, 60Hz, 4-Wire; Minimum Circuit Rating: 20
LWC3063ST – Stainless Steel LWC3063BD – PrintProof™ Black Stainless Steel	29 3/4" x 43 13/16" x 27"	28 1/2" x 43 7/16" x 23 1/2"	Required Power Supply: 240 / 208V, 60Hz, 4-Wire; Minimum Circuit Rating: 50 Amp
LWD3063ST – Stainless Steel LWD3063BD – PrintProof™ Black Stainless Steel	29 3/4" x 52 1/16" x 27"	28 1/2" x 51 13/16" x 23 1/2"	Required Power Supply: 240 / 208V, 60Hz, 4-Wire; Minimum Circuit Rating: 40 Amp
LWS3063ST – Stainless Steel LWS3063BD – PrintProof™ Black Stainless Steel	29 3/4" x 29 5/16" x 27"	28 1/2" x 28 15/16" x 23 1/2"	Required Power Supply: 240 / 208V, 60Hz, 4-Wire; Minimum Circuit Rating: 20
Gas Cooktops			
LSCG367ST – Stainless Steel	36" x 3 3/4" x 21 11/16"	33 15/16" x 3 9/16" x 19 11/16"	Required Power Supply: 120V, 60Hz; Minimum Circuit Rating: 15 Amp; Power Cord Type: 3-Prong, Attached to Unit
LSCG307ST – Stainless Steel	30" x 3 3/4" x 21 11/16"	28 1/2" x 3 9/16" x 19 11/16"	Required Power Supply: 120V, 60Hz; Minimum Circuit Rating: 15 Amp; Power Cord Type: 3-Prong, Attached to Unit
LCG3611ST – Stainless Steel LSCG367BD – PrintProof™ Black Stainless Steel	36" x 3 3/4" x 21 11/16"	33 15/16" x 3 9/16" x 19 11/16"	Required Power Supply: 120V, 60Hz; Minimum Circuit Rating: 15 Amp; Power Cord Type: 3-Prong, Attached to Unit
LCG3011ST – Stainless Steel LCG3011BD – PrintProof™ Black Stainless Steel	30" x 3 3/4" x 21 11/16"	28 1/2" x 3 9/16" x 19 11/16"	Required Power Supply: 120V, 60Hz; Minimum Circuit Rating: 15 Amp; Power Cord Type: 3-Prong, Attached to Unit
Electric Cooktops			
LSCE365ST – Black Glass w/Stainless Steel Frame	36 11/16" x 4" x 22 15/32"	34 9/16" x 20 3/8"	Required Power Supply: 120 / 208-240 V, 60 Hz, 3-Wire or 4-Wire; Minimum Circuit Rating: 50 Amp

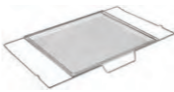

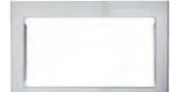
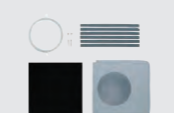

COOKING KEY DIMENSIONS AND INSTALLATION REQUIREMENTS

Model / Color	Product Dimensions (W x H x D)	Cutout Dimensions (W x H x D)	Installation Requirements
Electric Cooktops			
LSCE305ST – Black Glass w/Stainless Steel Frame	30 27/32" x 4" x 21 23/32"	29 3/8" x 20 1/4"	Required Power Supply: 120 / 208-240 V, 60 Hz, 3-Wire or 4-Wire; Minimum Circuit Rating: 40 Amp
LCE3610SB – Black Glass	36 11/16" x 4" x 21 15/16"	34 9/16" x 20 3/8"	Required Power Supply: 120 / 208-240 V, 60 Hz, 3-Wire or 4-Wire; Minimum Circuit Rating: 50 Amp
LCE3010SB – Black Glass	30 27/32" x 4" x 21 15/32"	29 3/8" x 20 1/4"	Required Power Supply: 120 / 208-240 V, 60 Hz, 3-Wire or 4-Wire; Minimum Circuit Rating: 40 Amp
Over-the-Range Microwave Ovens			
LSMC3086SS – PrintProof™ Stainless Steel	29 15/16" x 16 7/16" x 15 3/8"	30" x 13" (30" from Cooking Surface)	Required Power Supply: 120V, 60Hz; Minimum Circuit Rating: 15 Amp; Power Cord Type: 3-Prong, Attached to Unit
LMVH1711ST – Stainless Steel	29 15/16" x 16 7/16" x 15 3/8"	30" x 13" (30" from Cooking Surface)	Required Power Supply: 120V, 60Hz; Minimum Circuit Rating: 15 Amp; Power Cord Type: 3-Prong, Attached to Unit
LMHM2237ST – Stainless Steel LMHM2237BD – PrintProof™ Black Stainless Steel	29 7/8" x 17 13/18" x 15 3/4"	30" x 13" (30" from Cooking Surface)	Required Power Supply: 120V, 60Hz; Minimum Circuit Rating: 15 Amp; Power Cord Type: 3-Prong, Attached to Unit
LMH2235ST – Stainless Steel	29 7/8" x 17 15/16" x 15 7/8"	30" x 13" (30" from Cooking Surface)	Required Power Supply: 120V, 60Hz; Minimum Circuit Rating: 15 Amp; Power Cord Type: 3-Prong, Attached to Unit
LMVM2033ST – Stainless Steel	29 7/8" x 16 7/16" x 15 13/16"	30" x 13" (30" from Cooking Surface)	Required Power Supply: 120V, 60Hz; Minimum Circuit Rating: 15 Amp; Power Cord Type: 3-Prong, Attached to Unit
LMV2031SS – PrintProof™ Stainless Steel LMV2031BD – PrintProof™ Black Stainless Steel LMV2031ST – Stainless Steel	29 7/8" x 16 7/16" x 15 13/16"	30" x 13" (30" from Cooking Surface)	Required Power Supply: 120V, 60Hz; Minimum Circuit Rating: 15 Amp; Power Cord Type: 3-Prong, Attached to Unit
LMV1831SS – PrintProof™ Stainless Steel LMV1831BD – PrintProof™ Black Stainless Steel LMV1831ST – Stainless Steel	29 7/8" x 16 7/16" x 15 3/4"	30" x 13" (30" from Cooking Surface)	Required Power Supply: 120V, 60Hz; Minimum Circuit Rating: 15 Amp; Power Cord Type: 3-Prong, Attached to Unit
LMV1765ST – Stainless Steel	29 7/8" x 16 7/16" x 15 1/16"	30" x 13" (30" from Cooking Surface)	Required Power Supply: 120V, 60Hz; Minimum Circuit Rating: 15 Amp; Power Cord Type: 3-Prong, Attached to Unit
LMV1764ST – Stainless Steel	29 7/8" x 16 7/16" x 15 11/16"	30" x 13" (30" from Cooking Surface)	Required Power Supply: 120V, 60Hz; Minimum Circuit Rating: 15 Amp; Power Cord Type: 3-Prong, Attached to Unit

COOKING KEY DIMENSIONS AND INSTALLATION REQUIREMENTS

Model / Color	Product Dimensions (W x H x D)	Cutout Dimensions (W x H x D)	Installation Requirements
Countertop Microwaves			
LMC2075ST – Stainless Steel LMC2075BD – PrintProof™ Black Stainless Steel	23 7/8" x 13 9/16" x 19 3/8" With Optional Trim Kit: 29 23/32" x 19 1/16"	With Optional Trim Kit: 25 1/2" X 16 3/4" X 19 1/2"	Required Power Supply:120V, 60Hz; Minimum Circuit Rating: 15 Amp; Power Cord Type: 3-Prong, Attached to Unit
LMC1575ST – Stainless Steel LMC1575BD – PrintProof™ Black Stainless Steel	21.41" x 12.13" x 17"	–	Required Power Supply:120V, 60Hz; Minimum Circuit Rating: 15 Amp; Power Cord Type: 3-Prong, Attached to Unit
LMC0975ST – Stainless Steel	12.6" x 8.97" x 13.19"	–	Required Power Supply:120V, 60Hz; Minimum Circuit Rating: 15 Amp; Power Cord Type: 3-Prong, Attached to Unit
Hoods			
LSHD3680ST – Stainless Steel	35 7/16" x 27" to 48 1/2" x 22 1/16"	39 1/2" x 27 3/8" x 26 5/8" (26"–34" from Cooking Surface)	Required Power Supply:120V, 60Hz; 3-Wire or 4-Wire; Minimum Circuit Rating: 15 Amp
LSHD3080ST – Stainless Steel	29 15/16" x 27" to 48 1/2" x 22 1/16"	34 1/4" x 27 3/8" x 26 5/8" (26"–34" from Cooking Surface)	Required Power Supply:120V, 60Hz; 3-Wire or 4-Wire; Minimum Circuit Rating: 15 Amp
HCED3615S – Stainless Steel HCED3615D – Black Stainless Steel	35 7/16" x 27" to 48 1/2" x 22 1/16"	39 1/2" x 27 3/8" x 26 5/8" (26"–34" from Cooking Surface)	Required Power Supply:120V, 60Hz; 3-Wire or 4-Wire; Minimum Circuit Rating: 15 Amp
HCED3015S – Stainless Steel HCED3015D – Black Stainless Steel	29 15/16" x 27" to 48 1/2" x 22 1/16"	34 1/4" x 27 3/8" x 26 5/8" (26"–34" from Cooking Surface)	Required Power Supply:120V, 60Hz; 3-Wire or 4-Wire; Minimum Circuit Rating: 15 Amp

COOKING ACCESSORIES

Model	Description	For Use With
 LRAL302S	Air Fry Rack	Freestanding Ranges: LRGL5823, LRGL5825, LREL6323, LREL6325 Slide-in Ranges: LSEL6337, LSEL6335, LSEL6333, LSGL6337, LSGL6335
 LSFL301S	Slide-in Range Filler Kit (Side Gaps)	Gas and Electric Slide-in Ranges
 MK2030NST – Stainless Steel MK2030NBD – Black Stainless Steel	30-inch Microwave Trim Kit	LMC2075
 ZRC-01AN (Order from store.zephyronline.com)	Hood Recirculation Kit for Room Venting	Hoods
 Z1C-00AN (Order from store.zephyronline.com)	Hood Duct Cover Extension for Ceiling Heights that are between 9 ft. and 12 ft.	Hoods



LSFL301S Side Filler Kit

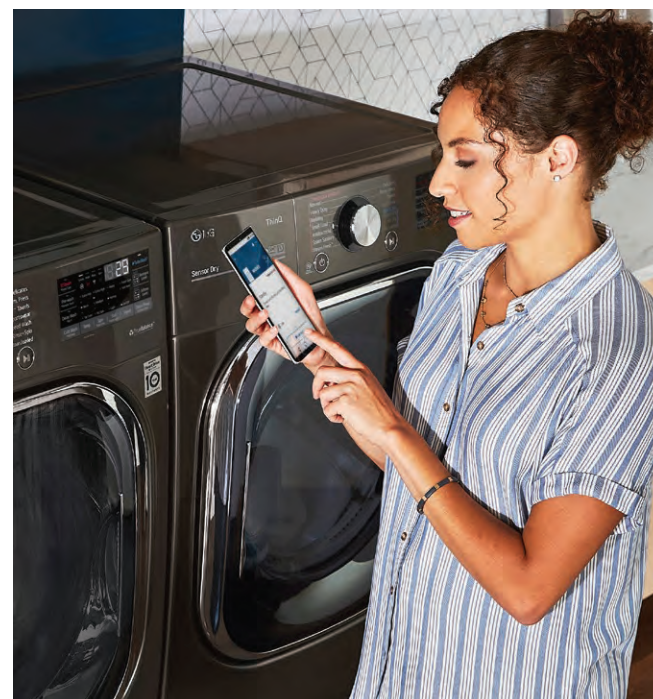


LRAL302S Air Fry Rack



LAUNDRY

WASHER FEATURES



AI Fabric Sensors

Forget about endless sorting or toggling through cycles—built-in sensors use AI technology to detect fabric texture and load size, then automatically select the right wash / dry motions, temperatures and more for advanced fabric care.

AI DD™ AI Sensor Dry™

Smart Pairing™

With Smart Pairing™, the washer can even tell the dryer to select a compatible drying cycle, making it the ultimate laundry hack.

TWINWash™ (Front Load Only)

Compatible front-load washers can be combined with LG SideKick™ pedestal washer to increase capacity with the ability to wash two loads at the same time that can't wait.

ezDispense™ (Front Load Only)

Why dig out detergent and fabric softener every time you do laundry, guessing at the amount or (worse) spilling when you're in a hurry, when your LG washer will take care of it for you? With ezDispense™ Automatic Dispenser, just fill the reservoirs once and you're set for up to 18 wash cycles.* Not only is it quick and easy, but it helps make laundry foolproof, adding just the right amount for each load size—at just the right time. You can even get an alert on your smartphone when it's time to refill, so you never miss a beat!**

LG ThinQ® Technology (Smart Wi-Fi Enabled)

Get alerts on your smartphone the minute clothes are clean, and control key laundry features from anywhere, at any time. You can also start a load of wash with a simple voice command, since LG ThinQ® appliances work with the Google Assistant and Amazon Alexa.



*Based on 8-12 lb. loads. Always use HE (High-Efficiency) detergent with this washer.
 **Wi-Fi and app required. Features subject to change. See lg.com for additional details and privacy information.

WASHER FEATURES

TurboWash™ 360° Technology (Front Load Only)

Clean larger loads under 30 minutes* while enjoying the same great washing performance you expect from LG. With five powerful jets that surround your clothes from every angle, penetrating deep into fabrics, for a more complete clean.

TurboWash™ 3D Technology (Top Load Only)

A complete clean and gentle care. A powerful jet spray, plus the tub and motor that rotate independently and in opposite directions, creates a powerful water flow that causes garments to rub against each other throughout the cycle for enhanced washing performance. A powerful yet gentle clean in 29 minutes.**

Agitator Innovation (Agitator Top Load Type)

Maximize your wash motions with specially designed fins which create a unique 4-way wash action that moves clothes left and right, up and down for a thorough clean that's still kind to clothes. A powerful yet gentle clean in 37 minutes.†

Allergiene™ Cycle / AAFA Certified

Certified asthma & allergy friendly® by the Asthma and Allergy Foundation of America (AAFA)—LG washers are the first to earn this distinction. Breathe a little easier with the Allergiene™ cycle that uses the gentle power of steam to remove common household allergens in fabrics by more than 95%††. A proven solution for creating a healthier home—perfect for the more than 65 million Americans living with asthma and allergies.

Direct Drive Motor with 10-Year Limited Warranty

Backed by a 10-year limited warranty, the LG Direct Drive Motor delivers peace of mind with every load. Fewer moving parts means less noise and vibration, greater stability and durable performance you can depend on for years to come.



*Based on independent testing in normal cycle with TurboWash™ option, 10 lb. load (June 2020).

†Based on independent testing in normal cycle with TurboWash™ Option, 8lb. Load (July 2020). **Based on independent testing in normal cycle, with an 8 lb. load (March 2019).

††Based on certification by the Asthma and Allergy Foundation of America (AAFA). ASTHMA & ALLERGY FRIENDLY Mark is a Registered Trademark of the ASTHMA AND ALLERGY FOUNDATION OF AMERICA and ALLERGY STANDARDS LTD.

WASHER FEATURES

TurboDrum™ Technology (Top Load Only)

TurboDrum™ Technology simulates the agitator effect of traditional top load washers. The LG Direct Drive Motor rotates independently from the tub mechanism, so they spin in different directions to create a powerful water flow, for a complete but gentler clean.

TubFresh™ System (Front Load Only)

To get your clothes as clean as possible, you need the washer itself to stay clean and fresh. The TubFresh™ system includes an advanced tub-cleaning cycle, a FreshCare™ option that tumbles clothes after the cycle completes, and other innovations that help you easily maintain your washer's freshness by cleaning and drying the wash tub, door, and gaskets.

Steam Technology

There's no clean like a steam clean. Our steam technology gently but powerfully penetrates fabrics to virtually eliminate dirt, odors and wrinkles.

6Motion™ Technology

All laundry shouldn't be washed the same. Based on the cycle you select, LG 6Motion™ technology uses up to 6 different wash motions, each designed to get clothes cleaner and help them last longer. Options range from a scrubbing PowerMotion that helps to dissolve stains to the gentle Swinging motion that's ideal for delicates.

TrueBalance™ Anti-Vibration System and LoDecibel™ System Put Peace and Quiet Back in Your Day

Run the washer whenever you want—LG's TrueBalance™ Anti-Vibration and LoDecibel™ systems are designed for quiet operation that keeps even big loads in balance to reduce washer noise and vibration. A must-have for main-floor or second-floor laundry rooms.

LG ENERGY STAR® Certified Washers

LG ENERGY STAR® certified high efficiency washers use far less water and energy than a conventional washer for savings that add up with each load. Get additional savings with load-sensing technology that adjusts water levels and wash times or by adding the ColdWash™ option to almost any cycle.



WASHER FEATURES

SenseClean™ System

Our washers are big, but that doesn't mean you have to do a big load every time. Our SenseClean™ System automatically sets the water level and wash time for each load based on the weight.

Water Plus (Impeller) / Deep Fill (Agitator) (Top Load Only)

LG top load washers use precise wash motions to ensure clothes move efficiently through the detergent and water mix and come out ultra-clean, all while saving energy and money. But if you decide you want to add extra water to the occasional load, LG gives you the option to get your (deep) fill. Press Water Plus or Deep Fill at the start of any cycle to select the maximum water level. Cycle already started? Just hit Pause, Water Plus or Deep Fill and then Start. Another plus—the one-time setting will automatically switch back to high-efficiency water levels the next time you're ready to wash.

ColdWash™ Technology

Using the cold cycle on your washer doesn't have to mean compromising. Powered by the LG Direct Drive Motor and 6Motion™ technology, ColdWash™ technology uses cold water and enhanced washing motions to penetrate deep into fabrics, giving you cold water savings with warm water performance. Can be used with almost any wash cycle and virtually all fabric types—even those you normally wash in warm water.

TubClean Cycle

The TubClean Cycle is designed for easy, periodic maintenance to keep your washer fresh. The cycle uses water jets to clean the wash tub and door, and an air dryer removes excess moisture, helping to keep your high-performing washer in tip-top condition.

SlamProof™ Glass Lid (Top Load Only)

Enjoy the convenience of a clear lid that allows you to watch your washer in action, uninterrupted. And closing it is safe and quiet thanks to our smooth-operating hydraulic hinge.



WASHTOWER™ FEATURES



Single Unit WashTower™ Design

Full-size and fully featured, with the washer on the bottom and dryer on top, the sleek single unit LG WashTower™ takes up half the space.* Redefine your space and reinvent how you do laundry with room to add a sink, a folding table or just organized storage—all with a sleek, streamlined look.

Built-in Intelligence

Take out the guesswork with AI Fabric Sensors, Smart Learner™ and Smart Pairing™. AI technology can select optimal wash & dry motions and settings. Activate Smart Learner™** in the ThinQ® app, and WashTower™ will remember your preferred settings, from wash temp to spin speed to dry level. With Smart Pairing™, the Washer can auto-select a compatible drying cycle.

Unified Center Control™

Only LG WashTower™ has the convenient Center Control™ panel that's perfectly positioned with both washer and dryer controls at just the right height. Typical stacked washers and dryers place dryer controls at the very top, making them hard to see and reach without using a step stool every time.



LG WashTower™

*Half the functional floor space. **When normal cycle is selected on control panel.

DRYER FEATURES

TurboSteam™ Technology

You grab your favorite shirt from the closet only to find that the hanger has left indelible imprints on each shoulder. What to do when there's no time to wash? LG TurboSteam™ technology to the rescue. Toss the shirt in the dryer, turn on TurboSteam™ and in just 10 minutes* your shirt is back in tip-top shape. Also helps refresh fabrics and reduce wrinkles in half the time of other steam settings.

TrueSteam® Technology

A lot of those drying headaches can be a thing of the past. Our TrueSteam® Technology generates real steam to reduce wrinkles and odors, and practically eliminates the need for ironing.

Wrinkle Care Option & EasyIron™ Option

Pressed for time? Just pop your dry clothes in for a tumble on the Wrinkle Care Option to reduce creases. Who likes ironing? No one. The EasyIron™ Option lightly moistens clothes to make ironing easier and more efficient.

Sensor Dry

Sensor adjusts drying time to eliminate the guesswork. No more damp clothes—the built-in sensor detects moisture levels and automatically adjusts drying time for loads of all sizes. No more over drying—dryer shuts off at just the right time to save energy with less wear and tear on clothes.

FlowSense™ Duct Clogging & Lint Filter Indicators

Keep your dryer clean, efficient, and safe. With the FlowSense™ Duct Clogging and Clean Filter Indicators, you'll know when it's time to clean the ducts and the lint filter out to ensure great drying every time, lower utility bills and fewer service calls.



TurboSteam™



TrueSteam®

*Based on test conducted at LG's test lab facility on December 10, 2014.

DRYER FEATURES



EasyLoad™ Dryer Door (Dryers)

The dual-opening options of the LG EasyLoad™ door make loading and unloading the dryer easier than ever. Transferring wet clothes from the washer? Simply press the release button and pull the door down, hamper style to keep that stray sock from hitting the floor. Removing dry items? Swing the door to the side to clear the way for your basket below. Even tight spaces and challenging laundry-room layouts are no match for versatility like this.

Ventless Condensing Drying (All-in-One Washer / Dryers)

No access to external venting? No problem. LG's all-in-one washer / dryers use ventless condensing to dry your clothes without the need for external venting.



LG SIDEKICK™ PEDESTAL WASHER FEATURES

Get it Done Faster

Use the LG SideKick™ on its own or at the same time as the front load washer above to save time. Each washer operates independently, so you can wash one load in hot and one in cold at the same time. Start or stop a cycle or open the door on either washer without interrupting the other.

LG SideKick™ for Small Loads that Can't Wait

Whether it's your kids' favorite shirt, yoga pants or a school uniform, washing a full load seems wasteful for just a few pieces. Now you can wash small loads that just can't wait with the LG SideKick™ Pedestal Washer or wash two loads at once to save time.

LG SideKick™ Specialty Care

Use the LG SideKick™ to wash small loads that can't wait or specialty care for delicates. It's hand wash care, now hands-free. Special cycles for Intimates, Hand Wash and Active Wear ensure proper fabric care and thorough cleaning for all items.



LG SideKick™

CLOTHES STYLER / STEAM CLOSET FEATURES

LG Styler TrueSteam®

TrueSteam® technology uses the gentle power of steam to refresh clothing without the use of chemicals or harsh soaps. Reduce odors and smooth out fabrics you don't want to machine wash and dry on a daily basis.

LG Styler Gentle Dry

Dry special-care items like knits, cashmere, lingerie and other delicates. Avoid the damage of high-heat tumble dryers and help preserve the clothing you love. It also dries clothing and "dry flat" labeled items much faster than conventional air drying.

LG Styler Plug and Go

Can easily be placed in a laundry room, mudroom or walk-in closet—no need for an electrician or plumber. Just plug into a standard 120v outlet, fill the portable water container and go.

Dehumidify Your Space

Dehumidify feature is a space-saving way to eliminate damp air and musty smells in the surrounding room without a standalone dehumidifier. (LG STUDIO only)



LG styler® Steam Closet

FRONT LOAD WASHERS



LG SIGNATURE

WM9500HKA 5.8 cu. ft. Front Load Washer

- 5.8 cu. ft. Mega Capacity
- TurboWash® Technology
- Ergonomic Angled Door for Easier Access
- Full Touch On-Door Control Panel
- Steam Technology
- 15 Cycles / 13 Options
- ColdWash™ Option
- Direct Drive Motor (10-Year Limited Warranty)
- LG SideKick™ Compatible (WD205CK)
- LG ThinQ® Technology (Wi-Fi)

Washer
● WM9500HKA – Black Stainless Steel

Matching Dryers
● DLEX9500K (Electric) – Black Stainless Steel
● DLGX9501K (Gas) – Black Stainless Steel



WM8100HVA 5.2 cu. ft. Front Load Washer

- 5.2 cu. ft. Mega Capacity
- TurboWash® Technology
- 14 Cycles / 11 Options
- Allergiene™ Cycle
- ColdWash™ Option
- Direct Drive Motor (10-Year Limited Warranty)
- NeveRust™ Stainless Steel Tub
- Drum Light
- SmartDiagnosis™

Washer
● WM8100HVA – Graphite Steel

Matching Dryers
● DLEX8100V (Electric) – Graphite Steel
● DLGX8101V (Gas) – Graphite Steel



WM4500HBA 5.0 cu. ft. Front Load Washer

- 5.0 cu. ft. Mega Capacity
- TurboWash™ 360° Technology
- AI Fabric Sensor / Smart Pairing™
- ezDispense™ Automatic Dispenser
- 14 Cycles / 15 Options
- Allergiene™ Cycle
- ColdWash™ Option
- Direct Drive Motor (10-Year Limited Warranty)
- NeveRust™ Stainless Steel Tub
- LG ThinQ® Technology (Wi-Fi)

Washer
● WM4500HBA – Black Steel

Matching Dryers
● DLEX4500B (Electric) – Black Steel
● DLGX4501B (Gas) – Black Steel

FRONT LOAD WASHERS



WM4200H_A 5.0 cu. ft. Front Load Washer

- 5.0 cu. ft. Mega Capacity
- TurboWash™ 360° Technology
- AI Fabric Sensor / Smart Pairing™
- Tempered Glass Door
- 14 Cycles / 13 Options
- Allergiene™ Cycle
- ColdWash™ Option
- Direct Drive Motor (10-Year Limited Warranty)
- NeveRust™ Stainless Steel Tub
- LG ThinQ® Technology (Wi-Fi)

Washer
● WM4200HBA – Black Steel
○ WM4200HWA – White

Matching Dryers
● DLEX4200B (Electric) – Black Steel
● DLGX4201B (Gas) – Black Steel
● DLHC4200B (Heat Pump) – Black Steel
○ DLEX4200W (Electric) – White
○ DLGX4201W (Gas) – White
○ DLHC4200W (Heat Pump) – White



WM4000H_A 4.5 cu. ft. Front Load Washer

- 4.5 cu. ft. Ultra Large Capacity
- TurboWash™ 360° Technology
- AI Fabric Sensor / Smart Pairing™
- Tempered Glass Door
- 12 Cycles / 13 Options
- Allergiene™ Cycle
- ColdWash™ Option
- Direct Drive Motor (10-Year Limited Warranty)
- NeveRust™ Stainless Steel Tub
- LG ThinQ® Technology (Wi-Fi)

Washer
● WM4000HBA – Black Steel
○ WM4000HWA – White

Matching Dryers
● DLEX4000B (Electric) – Black Steel
● DLGX4001B (Gas) – Black Steel
○ DLEX4000W (Electric) – White
○ DLGX4001W (Gas) – White



WM3600H_A 4.5 cu. ft. Front Load Washer

- 4.5 cu. ft. Ultra Large Capacity
- AI Fabric Sensor / Smart Pairing™
- Tempered Glass Door
- 10 Cycles / 9 Options
- Allergiene™ Cycle
- ColdWash™ Option
- Direct Drive Motor (10-Year Limited Warranty)
- NeveRust™ Stainless Steel Tub
- LG ThinQ® Technology (Wi-Fi)

Washer
● WM3600HVA – Graphite Steel
○ WM3600HWA – White

Matching Dryers
● DLE3600V (Electric) – Graphite Steel
● DLG3601V (Gas) – Graphite Steel
○ DLE3600W (Electric) – White
○ DLG3601W (Gas) – White

FRONT LOAD WASHERS



WM3400CW 4.5 cu. ft. Front Load Washer

- 4.5 cu. ft. Ultra Large Capacity
- 6Motion™ Technology
- 8 Cycles / 6 Options
- ColdWash™ Option
- Direct Drive Motor (10-Year Limited Warranty)
- NeveRust™ Stainless Steel Tub
- SmartDiagnosis™



- Washer
- WM3400CW – White

- Matching Dryers
- DLE3400W (Electric) – White
 - DLG3401W (Gas) – White



WM1455H_A 2.4 cu. ft. Compact 24" Wide Front Load Washer

- 2.4 cu. ft. Capacity
- 24" Wide Compact Front Load Washer
- AI Fabric Sensor
- 14 Cycles / 9 Options
- Steam Technology & Allergiene™ Cycle
- TubClean Cycle
- Direct Drive Motor (10-Year Limited Warranty)
- NeveRust™ Stainless Steel Tub
- TrueBalance™ Anti-Vibration System
- LoDecibel™ Quiet Operation
- LG ThinQ® Technology (Wi-Fi)



- Washer
- WM1455HVA – Graphite Steel
 - WM1455HWA – White

- Matching Dryers
- DLHC1455V (Heat Pump) – Graphite Steel
 - DLHC1455W (Heat Pump) – White



WM1388HW 2.3 cu. ft. Compact 24" Wide Front Load Washer

- 2.3 cu. ft. Capacity
- 24" Wide Compact Front Load Washer
- 14 Cycles / 10 Options
- 1,400 RPM
- Internal Heater
- Direct Drive Motor (10-Year Limited Warranty)
- NFC Tag On



- Washer
- WM1388HW – White

- Matching Dryers
- DLEC888W (Electric) – White

End-of-Life Q3 2021; Available in limited quantities, contact your LG Sales Rep for details

FRONT LOAD DRYERS



DLEX9500K / DLGX9501K 9.0 cu. ft. TurboSteam® Front Load Dryer

- 9.0 cu. ft. Mega Capacity
- TurboSteam™ Technology
- SteamSanitary™ and SteamFresh™ Cycle
- Full Touch On-Door Control Panel
- 14 Cycles / 14 Options
- Sensor Dry System
- FlowSense™ Duct Clogging Indicator
- LoDecibel™ Operation
- NeveRust™ Stainless Steel Drum
- LG ThinQ® Technology (Wi-Fi)



LG SIGNATURE

- Dryers
- DLEX9500K (Electric) – Black Stainless Steel
 - DLGX9501K (Gas) – Black Stainless Steel

- Matching Washer
- WM9500HKA – Black Stainless Steel



DLEX8100V / DLGX8101V 9.0 cu. ft. TrueSteam® Front Load Dryer

- 9.0 cu. ft. Mega Capacity
- TrueSteam™ Technology
- SteamSanitary™ and SteamFresh™ Cycle
- 14 Cycles / 11 Options
- Sensor Dry System
- FlowSense™ Duct Clogging Indicator
- LoDecibel™ Operation
- SmartDiagnosis™

- Dryers
- DLEX8100V (Electric) – Graphite Steel
 - DLGX8101V (Gas) – Graphite Steel

- Matching Washer
- WM8100HVA – Graphite Steel



DLEX4500B / DLGX4501B 7.4 cu. ft. TurboSteam® Front Load Dryer

- 7.4 cu. ft. Ultra Large Capacity
- TurboSteam™ Technology
- SteamSanitary™ and SteamFresh™ Cycle
- AI Fabric Sensor / Smart Pairing™
- 14 Cycles / 12 Options
- Sensor Dry System
- FlowSense™ Duct Clogging Indicator
- LoDecibel™ Operation
- NeveRust™ Stainless Steel Drum
- LG ThinQ® Technology (Wi-Fi)

- Dryers
- DLEX4500B (Electric) – Black Steel
 - DLGX4501B (Gas) – Black Steel

- Matching Washer
- WM4500HBA – Black Steel

FRONT LOAD DRYERS



DLEX4200_ / DLGX4201_ 7.4 cu. ft. TurboSteam® Front Load Dryer

- 7.4 cu. ft. Ultra Large Capacity
- TurboSteam™ Technology
- AI Fabric Sensor / Smart Pairing™
- SteamSanitary™ and SteamFresh™ Cycle
- 14 Cycles / 12 Options
- Sensor Dry System
- FlowSense™ Duct Clogging and Lint Filter Indicators
- LoDecibel™ Quiet Operation
- Tempered Glass Door
- LG ThinQ® Technology (Wi-Fi)

- Dryers
- DLEX4200B (Electric) – Black Steel
 - DLGX4201B (Gas) – Black Steel
 - DLEX4200W (Electric) – White
 - DLGX4201W (Gas) – White

- Matching Washers
- WM4200HBA – Black Steel
 - WM4200HWA – White



DLEX4000_ / DLGX4001_ 7.4 cu. ft. TurboSteam® Front Load Dryer

- 7.4 cu. ft. Ultra Large Capacity
- TurboSteam™ Technology
- AI Fabric Sensor / Smart Pairing™
- SteamSanitary™ and SteamFresh™ Cycle
- 12 Cycles / 12 Options
- Sensor Dry System
- FlowSense™ Duct Clogging and Lint Filter Indicators
- LoDecibel™ Quiet Operation
- Tempered Glass Door
- LG ThinQ® Technology (Wi-Fi)

- Dryers
- DLEX4000B (Electric) – Black Steel
 - DLGX4001B (Gas) – Black Steel
 - DLEX4000W (Electric) – White
 - DLGX4001W (Gas) – White

- Matching Washers
- WM4000HBA – Black Steel
 - WM4000HWA – White



DLE3600_ / DLG3601_ 7.4 cu. ft. Front Load Dryer

- 7.4 cu. ft. Ultra Large Capacity
- AI Fabric Sensor / Smart Pairing™
- 10 Cycles / 9 Options
- Sensor Dry System
- FlowSense™ Duct Clogging and Lint Filter Indicators
- LoDecibel™ Quiet Operation
- Tempered Glass Door
- LG ThinQ® Technology (Wi-Fi)

- Dryers
- DLE3600V (Electric) – Graphite Steel
 - DLG3601V (Gas) – Graphite Steel
 - DLE3600W (Electric) – White
 - DLG3601W (Gas) – White

- Matching Washers
- WM3600HVA – Graphite Steel
 - WM3600HWA – White

FRONT LOAD DRYERS



DLE3400W / DLG3401W 7.4 cu. ft. Front Load Dryer

- 7.4 cu. ft. Ultra Large Capacity
- 8 Cycles / 7 Options
- Sensor Dry System
- FlowSense™ Duct Clogging and Lint Filter Indicators
- LoDecibel™ Quiet Operation
- SmartDiagnosis™

- Dryers
- DLE3400W (Electric) – White
 - DLG3401W (Gas) – White
- Matching Washer
- WM3400CW – White



DLHC1455_ 4.2 cu. ft. Compact 24" Wide Heat Pump Dryer (Ventless)

- 4.2 cu. ft. Compact Capacity
- Dual Inverter HeatPump™ Technology
- Ventless Design
- Auto Cleaning Condenser
- 14 Cycles / 12 Options
- Sensor Dry System
- Wrinkle Care Option
- Delicate Cycle
- NeveRust™ Stainless Steel Drum
- LG ThinQ® Technology (Wi-Fi)

- Dryers
- DLHC1455V (Electric) – Graphite Steel
 - DLHC1455W (Electric) – White

- Matching Washers
- WM1455HV – Graphite Steel
 - WM1455HW – White



End-of-Life Q3 2021; Available in limited quantities, contact your LG Sales Rep for details

DLEC888W 4.2 cu. ft. Compact 24" Wide Ventless Condensing Dryer

- 4.2 cu. ft. Capacity
- Ventless Condensing Dryer
- 14 Cycles / 10 Options
- Sensor Dry System
- Wrinkle Care Option
- Delicate Cycle
- NeveRust™ Stainless Steel Drum
- NFC Tag On

- Dryers
- DLEC888W (Electric) – White
- Matching Washer
- WM1388HW – White

WASHTOWER™



WSEX200HNA / WSGX201HNA WashTower™ with Center Control™

- Single Unit WashTower™ Design with Center Control
- 5.0 cu. ft. Washer / 7.4 cu. ft. Dryer
- TurboWash™ 360° Wash Technology
- TurboSteam® Dryer
- SteamFresh™ Dryer Cycle
- Built-in Intelligence with AIDD / AI Fabric Sensor, Smart Learner, Smart Pairing™
- 6 Wash Cycles / 10 Wash Options
- 6 Dry Cycles / 9 Dry Options
- Allergiene™ Cycle
- Direct Drive Motor (10-Year Limited Warranty)
- NeveRust™ Stainless Steel Drum (Washer & Dryer)
- Drying Rack Included
- LG ThinQ® Technology (Wi-Fi)

- WSEX200HNA (Electric) – Noble Steel
- WSGX201HNA (Gas) – Noble Steel



WASHTOWER™



WKE100H_A / WKG101H_A WashTower™ with Center Control™

- Single Unit WashTower™ Design with Center Control
- 4.5 cu. ft. Washer / 7.4 cu. ft. Dryer
- Built-in Intelligence with AIDD / AI Fabric Sensor, Smart Learner, Smart Pairing™
- 6 Wash Cycles / 9 Wash Options
- 6 Dry Cycles / 7 Dry Options
- Allergiene™ Cycle
- Direct Drive Motor (10-Year Limited Warranty)
- NeveRust™ Stainless Steel Drum (Washer)
- LG ThinQ® Technology (Wi-Fi)

- WKE100HVA (Electric) – Graphite Steel
- WKG101HVA (Gas) – Graphite Steel
- WKE100HWA (Electric) – White
- WKG101HWA (Gas) – White



WKEX200H_A / WKGX201H_A WashTower™ with Center Control™

- Single Unit WashTower™ Design with Center Control
- 4.5 cu. ft. Washer / 7.4 cu. ft. Dryer
- TurboWash™ 360° Wash Technology
- TurboSteam® Dryer
- SteamFresh™ Dryer Cycle
- Built-in Intelligence with AIDD / AI Fabric Sensor, Smart Learner, Smart Pairing™
- 6 Wash Cycles / 10 Wash Options
- 6 Dry Cycles / 9 Dry Options
- Allergiene™ Cycle
- Direct Drive Motor (10-Year Limited Warranty)
- NeveRust™ Stainless Steel Drum (Washer & Dryer)
- LG ThinQ® Technology (Wi-Fi)

- WKEX200HBA (Electric) – Black Steel
- WKGX201HBA (Gas) – Black Steel
- WKEX200HWA (Electric) – White
- WKGX201HWA (Gas) – White



LG BUILDER

REFRIGERATION

DISHWASHERS

COOKING

LAUNDRY

ADD-ONS

LG BUILDER

REFRIGERATION

DISHWASHERS

COOKING

LAUNDRY

ADD-ONS

ALL-IN-ONE COMBINATION WASHER / DRYER



LG SIGNATURE

LUWM101HWA

2.8 cu. ft. Compact All-in-One Washer & Dryer Combo

- All-in-One Washer / Dryer Combination
- Inverter Heat Pump Drying
- Ventless Design
- 2.8 cu. ft. Capacity
- Quick Circle LCD Display Controls 2 Washers
- Auto Dosing System
- TurboWash® Technology
- Steam Technology & Allergiene™ Cycle
- 17 Cycles / 9 Options
- 20-Year Warranty on Inverter Direct Drive Motor
- LG ThinQ® Technology (Wi-Fi)

○ LUWM101HWA – White



WM3998HBA

4.5 cu. ft. All-in-One Washer & Dryer Combo

- All-in-One Washer / Dryer Combination
- Ventless Condensing Drying
- 4.5 cu. ft. Ultra Large Capacity
- TurboWash® Technology
- Steam Technology & Allergiene™ Cycle
- 14 Cycles / 12 Options
- Internal Heater
- ColdWash™ Option
- Direct Drive Motor (10-Year Limited Warranty)
- NeveRust™ Stainless Steel Drum
- LG ThinQ® Technology (Wi-Fi)

● WM3998HBA – Black Steel



ALL-IN-ONE COMBINATION WASHER / DRYER



Available Q4 2021

WM3555H_A

2.4 cu. ft. Compact All-in-One Washer & Dryer Combo

- Compact All-in-One Washer / Dryer Combination
- Ventless Condensing Drying
- 2.4 cu. ft. Capacity
- TurboWash® 360 Technology
- Steam Technology & Allergiene™ Cycle
- 14 Cycles / 13 Options
- Internal Heater
- Direct Drive Motor (10-Year Limited Warranty)
- NeverRust™ Stainless Steel Drum
- LG ThinQ® Technology (Wi-Fi)

● WM3555HVA – Graphite Steel
○ WM3555HWA – White

PRELIMINARY INFORMATION



End-of-Life Q4 2021; Available in limited quantities, contact your LG Sales Rep for details

WM3499HVA

2.3 cu. ft. Compact All-in-One Washer & Dryer Combo

- Compact All-in-One Washer / Dryer Combination
- Ventless Condensing Drying
- 2.3 cu. ft. Capacity
- TurboWash® Technology
- Steam Technology & Allergiene™ Cycle
- 14 Cycles / 9 Options
- Internal Heater
- ColdWash™ Option
- Direct Drive Motor (10-Year Limited Warranty)
- NeverRust™ Stainless Steel Drum
- LG ThinQ® Technology (Wi-Fi)

● WM3499HVA – Graphite Steel



End-of-Life Q4 2021; Available in limited quantities, contact your LG Sales Rep for details

WM3488H_

2.3 cu. ft. Compact All-in-One Washer & Dryer Combo

- Compact All-in-One Washer / Dryer Combination
- Ventless Condensing Drying
- 2.3 cu. ft. Capacity
- 14 Cycles / 9 Options
- Internal Heater
- Direct Drive Motor (10-Year Limited Warranty)
- NeverRust™ Stainless Steel Drum
- NFC Tag On
- SmartDiagnosis™

● WM3488HS – Silver
○ WM3488HW – White

TOP LOAD WASHERS



WT7900HBA 5.5 cu. ft. Top Load Washer

- 5.5 cu. ft. Mega Capacity
- TurboWash3D™ Technology
- Steam Technology
- 14 Cycles / 15 Options
- Allergiene™ Cycle
- ColdWash™ Option
- 6Motion™ Technology
- Internal Heater
- Direct Drive Motor 10-Year Limited Warranty
- NeveRust™ Stainless Steel Tub & Wash Plate
- LG ThinQ® Technology (Wi-Fi)



- Washer
- WT7900HBA – Black Steel

- Matching Dryers
- DLEX7900BE (Electric) – Black Steel
 - DLGX7901BE (Gas) – Black Steel

TOP LOAD WASHERS



WT7300C_ 5.0 cu. ft. Top Load Washer

- 5.0 cu. ft. Capacity
- TurboWash3D™ Technology
- 8 Cycles / 14 Options
- ColdWash™ Option
- 6Motion™ Technology
- Direct Drive Motor 10-Year Limited Warranty
- NeveRust™ Stainless Steel Tub & Wash Plate
- LG ThinQ® Technology (Wi-Fi)



- Washer
- WT7300CV – Graphite Steel
 - WT7300CW – White

- Matching Dryers
- DLE7300VE (Electric) – Graphite Steel
 - DLG7301VE (Gas) – Graphite Steel
 - DLE7300WE (Electric) – White
 - DLG7301WE (Gas) – White



WT7800C_ 5.5 cu. ft. Top Load Washer

- 5.5 cu. ft. Mega Capacity
- TurboWash3D™ Technology
- 12 Cycles / 14 Options
- ColdWash™ Option
- 6Motion™ Technology
- Direct Drive Motor 10-Year Limited Warranty
- NeveRust™ Stainless Steel Tub & Wash Plate
- LG ThinQ® Technology (Wi-Fi)



- Washer
- WT7800CV – Graphite Steel
 - WT7800CW – White

- Matching Dryers
- DLEX7800VE (Electric) – Graphite Steel
 - DLGX7801VE (Gas) – Graphite Steel
 - DLEX7800WE (Electric) – White
 - DLGX7801WE (Gas) – White



WT7100CW 4.5 cu. ft. Top Load Washer

- 4.5 cu. ft. Capacity
- TurboDrum™ Technology
- 8 Cycles / 10 Options
- ColdWash™ Option
- 6Motion™ Technology
- Direct Drive Motor (10-Year Limited Warranty)
- NeveRust™ Stainless Steel Tub & Wash Plate
- SmartDiagnosis™



- Washer
- WT7100CW – White

- Matching Dryers
- DLE7100W (Electric) – White
 - DLG7101W (Gas) – White

Transitioning to WT7150CW Q3 2021; Available in limited quantities, contact your LG Sales Rep for details



WT7305C_ 4.8 cu. ft. Top Load Washer with Agitator

- 4.8 cu. ft. Capacity
- 4-Way™ Agitator
- TurboWash3D™ Technology
- Built-in Intelligence with Smart Pairing™
- 8 Cycles / 15 Options
- ColdWash™ Option
- 6Motion™ Technology
- Deep Fill Option
- Direct Drive Motor 10-Year Limited Warranty
- NeveRust™ Stainless Steel Tub
- LG ThinQ® Technology (Wi-Fi)



- Washer
- WT7305CV – Graphite Steel
 - WT7305CW – White

- Matching Dryers
- DLE7300VE (Electric) – Graphite Steel
 - DLG7301VE (Gas) – Graphite Steel
 - DLE7300WE (Electric) – White
 - DLG7301WE (Gas) – White



WT7005CW 4.3 cu. ft. Top Load Washer with Agitator

- 4.3 cu. ft. Capacity
- 4-Way™ Agitator
- TurboDrum™ Technology
- 8 Cycles / 9 Options
- ColdWash™ Option
- 6Motion™ Technology
- Deep Fill Option
- Direct Drive Motor 10-Year Limited Warranty
- NeveRust™ Stainless Steel Tub
- SmartDiagnosis™

- Washer
- WT7005CW – White

- Matching Dryers
- DLE7000W (Electric) – White
 - DLG7001W (Gas) – White

TOP LOAD DRYERS



DLEX7900BE / DLGX7901BE 7.3 cu. ft. Rear Control Top Load Dryer with TurboSteam™

- 7.3 cu. ft. Capacity
- TurboSteam™ Technology
- SteamSanitary™ and SteamFresh™ Cycle
- EasyLoad™ Door
- 14 Cycles / 12 Options
- Sensor Dry System
- FlowSense™ Duct Clogging Indicator
- LoDecibel™ Quiet Operation
- LG ThinQ® Technology (Wi-Fi)

- Dryers
- DLEX7900BE (Electric) – Black Steel
 - DLGX7901BE (Gas) – Black Steel
- Matching Washer
- WT7900HBA – Black Steel



DLEX7800_E / DLGX7801_E 7.3 cu. ft. Rear Control Top Load Dryer with TurboSteam™

- 7.3 cu. ft. Capacity
- TurboSteam™ Technology
- SteamSanitary™ and SteamFresh™ Cycle
- EasyLoad™ Door
- 14 Cycles / 12 Options
- Sensor Dry System
- FlowSense™ Duct Clogging Indicator
- LoDecibel™ Quiet Operation
- LG ThinQ® Technology (Wi-Fi)

- Dryers
- DLEX7800VE (Electric) – Graphite Steel
 - DLGX7801VE (Gas) – Graphite Steel
 - DLEX7800WE (Electric) – White
 - DLGX7801WE (Gas) – White
- Matching Washers
- WT7800CV – Graphite Steel
 - WT7800CW – White

TOP LOAD DRYERS



DLE7300_E / DLG7301_E 7.3 cu. ft. Rear Control Top Load Dryer

- 7.3 cu. ft. Capacity
- EasyLoad™ Door
- 8 Cycles / 12 Options
- Sensor Dry System
- FlowSense™ Duct Clogging Indicator
- LoDecibel™ Quiet Operation
- LG ThinQ® Technology (Wi-Fi)

- Dryers
- DLE7300VE (Electric) – Graphite Steel
 - DLG7301VE (Gas) – Graphite Steel
 - DLE7300WE (Electric) – White
 - DLG7301WE (Gas) – White
- Matching Washers
- WT7300CV – Graphite Steel
 - WT7300CW – White



DLE7100W / DLG7101W 7.3 cu. ft. Rear Control Top Load Dryer

- 7.3 cu. ft. Capacity
- 8 Cycles / 7 Options
- Sensor Dry
- Wrinkle Care Option
- FlowSense™ Duct Clogging Indicator
- LoDecibel™ Quiet Operation
- SmartDiagnosis™

- Dryers
- DLE7100W (Electric) – White
 - DLG7101W (Gas) – White
- Matching Washer
- WT7100CW – White

Transitioning to DLE7150W / DLG7151W Q3 2021; Available in limited quantities, contact your LG Sales Rep for details



DLE7000W / DLG7001W 7.3 cu. ft. Rear Control Top Load Dryer

- 7.3 cu. ft. Capacity
- 8 Cycles / 7 Options
- Sensor Dry
- Wrinkle Care Option
- FlowSense™ Duct Clogging & Lint Filter Indicators
- LoDecibel™ Quiet Operation
- SmartDiagnosis™

- Dryers
- DLE7000W (Electric) – White
 - DLG7001W (Gas) – White
- Matching Washer
- WT7005CW – White



CLOTHES STYLER / STEAM CLOSETS



S5MSB LG STUDIO Styler® Steam Closet

- Perfect Laundry Companion
- Extra Large Capacity (6 Items)
- TrueSteam® Technology
- Refresh Clothing
- Reduce Wrinkles & Odors
- Gentle, Fast Drying for Delicates
- Pants Crease Care
- Dehumidify Feature
- Plug & Go Installation, No Plumbing Needed
- LG ThinQ® Technology (Wi-Fi)

- S5MSB – Black Tinted Mirror

LG styler® | Steam Closet



S3RFBN / S3WFBN / S3MFBN LG Styler® Steam Closet

- Perfect Laundry Companion
- Large Capacity (4 Items)
- TrueSteam® Technology
- Refresh Clothing
- Reduce Wrinkles & Odors
- Gentle, Fast Drying for Delicates
- Pants Crease Care
- Plug & Go Installation, No Plumbing Needed
- LG ThinQ® Technology (Wi-Fi)

- S3MFBN – Mirror Finish
- S3RFBN – Espresso (Dark Brown)
- S3WFBN – White

LG styler® | Steam Closet

LG SIDEKICK™ PEDESTAL WASHERS



LG SIGNATURE

WD205CK 29" LG SIGNATURE SideKick™ Pedestal Washer

- 1.0 cu. ft. Capacity
- NeveRust™ Stainless Steel Drum
- Direct Drive Motor with 10-Year Limited Warranty
- Perfect for Intimates, Hand Wash or Active Wear
- Smart Diagnosis™

- WD205CK – Black Stainless Steel
- Compatible with 29" Wide LG SIGNATURE Front Load Washers



WD200CV 29" LG SideKick™ Pedestal Washer

- 1.0 cu. ft. Capacity
- NeveRust™ Stainless Steel Drum
- Direct Drive Motor with 10-Year Limited Warranty
- Perfect for Intimates, Hand Wash or Active Wear
- Smart Diagnosis™

- WD200CV – Graphite Steel
- Compatible with 29" Wide Front Load Washers



WD100C_ 27" LG SideKick™ Pedestal Washer

- 1.0 cu. ft. Capacity
- NeveRust™ Stainless Steel Drum
- Direct Drive Motor with 10-Year Limited Warranty
- Perfect for Intimates, Hand Wash or Active Wear
- Smart Diagnosis™

- WD100CV – Graphite Steel
- WD100CB – Black Steel
- WD100CW – White
- Compatible with 27" Wide Front Load Washers and 27" Wide All-in-One Washer & Dryer Combos

PEDESTAL STORAGE DRAWERS AND SHORT PEDESTAL



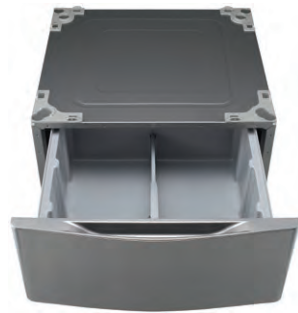
WDP5K 29" Pedestal Storage Drawer

- Elevates appliances off the floor by more than a foot for more comfortable loading and unloading
- Spacious drawer helps minimize laundry room clutter

- WDP5K – Black Stainless Steel

Compatible with 29" Wide LG SIGNATURE Front Load Washers

LG SIGNATURE

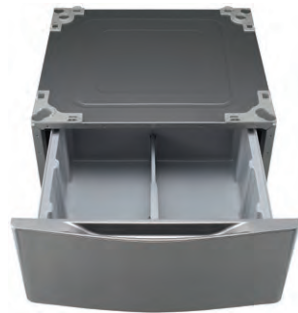


WDP5V 29" Pedestal Storage Drawer

- Elevates appliances off the floor by more than a foot for more comfortable loading and unloading
- Spacious drawer helps minimize laundry room clutter

- WDP5V – Graphite Steel

Compatible with 29" Wide Front Load Washers and Dryers



WDP4_ 27" Pedestal Storage Drawer

- Elevates appliances off the floor by more than a foot for more comfortable loading and unloading
- Spacious drawer helps minimize laundry room clutter
- Compatible with Select LG 27" Front Load Washers and Dryers

- WDP4V – Graphite Steel
- WDP4B – Black Steel
- WDP4W – White

Compatible with 27" Wide Front Load Washers and Dryers, and 27" Wide All-in-One Washer & Dryer Combos



WDP51_ 27" ADA Compliant Pedestal Riser

- Elevates appliances off the floor by 5 1/8"
- Compatible with Select LG 27" Front Load Washers and Dryers

- WDP51B – Black Steel
- WDP51W – White

Compatible with 27" Wide Front Load Washers and Dryers, and 27" Wide All-in-One Washer & Dryer Combos

Shown with WM4000HWA Washer



LAUNDRY KEY DIMENSIONS AND INSTALLATION REQUIREMENTS

Model / Color	Product Dimensions (W x H x D)	Cutout Dimensions (W x H x D)	Installation Requirements
Front Load Washers			
WM9500HKA – Black Stainless Steel	29 5/8" x 41 3/16" x 34 1/16"	31 5/8" x 41 3/16" x 38 1/16"	Electrical Requirements: 120V, 60 Hz, 10 Amps; Power Outlet Location: Within 60" of Either Side; Plug Type: 3-Prong (Cord Attached to Unit)
WM8100HVA – Graphite Steel	29" x 40 3/4" x 33"	31" x 40 3/4" x 37"	Electrical Requirements: 120V, 60 Hz, 10 Amps; Power Outlet Location: Within 60" of Either Side; Plug Type: 3-Prong (Cord Attached to Unit)
WM4500HBA – Black Steel	27" x 39" x 33 1/4"	29" x 39 1/4" x 37 1/4"	Electrical Requirements: 120V, 60 Hz, 10 Amps; Power Outlet Location: Within 60" of Either Side; Plug Type: 3-Prong (Cord Attached to Unit)
WM4200HWA – White WM4200HBA – Black Steel	27" x 39" x 33 1/4"	29" x 39 1/4" x 37 1/4"	Electrical Requirements: 120V, 60 Hz, 10 Amps; Power Outlet Location: Within 60" of Either Side; Plug Type: 3-Prong (Cord Attached to Unit)
WM4000HWA – White WM4000HBA – Black Steel	27" x 39" x 30 1/4"	29" x 39 1/4" x 34 1/4"	Electrical Requirements: 120V, 60 Hz, 10 Amps; Power Outlet Location: Within 60" of Either Side; Plug Type: 3-Prong (Cord Attached to Unit)
WM3600HWA – White WM3600HVA – Graphite Steel	27" x 39" x 30 1/4"	29" x 39 1/4" x 34 1/4"	Electrical Requirements: 120V, 60 Hz, 10 Amps; Power Outlet Location: Within 60" of Either Side; Plug Type: 3-Prong (Cord Attached to Unit)
WM3400CW – White	27" x 39" x 30 1/4"	29" x 39 1/4" x 34 1/4"	Electrical Requirements: 120V, 60 Hz, 10 Amps; Power Outlet Location: Within 60" of Either Side; Plug Type: 3-Prong (Cord Attached to Unit)
WM1455HWA – White WM1455HVA – Graphite Steel	24" x 33 1/2" x 22 1/4"	26" x 33 3/4" x 26 1/4"	Electrical Requirements: 120V, 60 Hz, 10 Amps; Power Outlet Location: Within 60" of Either Side; Plug Type: 3-Prong (Cord Attached to Unit)
WM1388HW – White	24" x 33 1/2" x 25 1/4"	26" x 33 3/4" x 29 1/4"	Electrical Requirements: 120V, 60 Hz, 10 Amps; Power Outlet Location: Within 60" of Either Side; Plug Type: 3-Prong (Cord Attached to Unit)

LAUNDRY KEY DIMENSIONS AND INSTALLATION REQUIREMENTS

Model / Color	Product Dimensions (W x H x D)	Cutout Dimensions (W x H x D)	Installation Requirements
Front Load Dryers			
DLEX9500K (Electric) – Black Stainless Steel DLGX9501K (Gas) – Black Stainless Steel	29" x 40 7/8" x 33 3/8"	31" x 41 1/8" x 38 3/8" (35 3/8" D for Side or Bottom Venting)	Electrical Requirements: Electric: 240V, 30 Amps; Gas: 120V, 15 Amps; Power Outlet Location: Within 48" of Either Side; Plug Type: Gas: 3-Prong (Cord Attached to Unit), Electric: 4-Wire (Cord Required)
DLEX8100V (Electric) – Graphite Steel DLGX8101V (Gas) – Graphite Steel	29" x 40 13/16" x 32 1/8"	31" x 40 13/16" x 37 1/8" (34 1/8" D for Side or Bottom Venting)	Electrical Requirements: Electric: 240V, 30 Amps; Gas: 120V, 15 Amps; Power Outlet Location: Within 48" of Either Side; Plug Type: Gas: 3-Prong (Cord Attached to Unit), Electric: 4-Wire (Cord Required)
DLEX4500B (Electric) – Black Steel DLGX4501B (Gas) – Black Steel	27" x 38 11/16" x 30"	29" x 39" x 35" (32" D for Side or Bottom Venting)	Electrical Requirements: Electric: 240V, 30 Amps; Gas: 120V, 15 Amps; Power Outlet Location: Within 48" of Either Side; Plug Type: Gas: 3-Prong (Cord Attached to Unit), Electric: 4-Wire (Cord Required)
DLEX4200W (Electric) – White DLGX4201W (Gas) – White DLEX4200B (Electric) – Black Steel DLGX4201B (Gas) – Black Steel	27" x 39" x 30 1/8"	29" x 39" x 35 1/8" (32 1/8" D for Side or Bottom Venting)	Electrical Requirements: Electric: 240V, 30 Amps; Gas: 120V, 15 Amps; Power Outlet Location: Within 48" of Either Side; Plug Type: Gas: 3-Prong (Cord Attached to Unit), Electric: 4-Wire (Cord Required)
DLEX4000W (Electric) – White DLGX4001W (Gas) – White DLEX4000B (Electric) – Black Steel DLGX4001B (Gas) – Black Steel	27" x 39" x 30 1/8"	29" x 39" x 35 1/8" (32 1/8" D for Side or Bottom Venting)	Electrical Requirements: Electric: 240V, 30 Amps; Gas: 120V, 15 Amps; Power Outlet Location: Within 48" of Either Side; Plug Type: Gas: 3-Prong (Cord Attached to Unit), Electric: 4-Wire (Cord Required)
DLE3600W (Electric) – White DLG3601W (Gas) – White DLE3600V (Electric) – Graphite Steel DLG3601V (Gas) – Graphite Steel	27" x 39" x 30 1/8"	29" x 39" x 35 1/8" (32 1/8" D for Side or Bottom Venting)	Electrical Requirements: Electric: 240V, 30 Amps; Gas: 120V, 15 Amps; Power Outlet Location: Within 48" of Either Side; Plug Type: Gas: 3-Prong (Cord Attached to Unit), Electric: 4-Wire (Cord Required)
DLE3400W (Electric) – White DLG3401W (Gas) – White	27" x 38 11/16" x 30 1/8"	29" x 38 11/16" x 35 1/8" (32 1/8" D for Side or Bottom Venting)	Electrical Requirements: Electric: 240V, 30 Amps; Gas: 120V, 15 Amps; Power Outlet Location: Within 48" of Either Side; Plug Type: Gas: 3-Prong (Cord Attached to Unit), Electric: 4-Wire (Cord Required)
DLHC1455W (Electric) – White DLHC1455V (Electric) – Graphite Steel	24" x 33 1/2" x 26 3/8"	26" x 33 1/2" x 31 3/8"	Electrical Requirements: Electric: 240V, 30 Amps; Power Outlet Location: Within 24" of Either Side; Plug Type: 4-Wire (Cord Required)
DLEC888W (Electric) – White	23 5/8" x 33 1/2" x 25 1/4"	26" x 33 1/2" x 30 1/4"	Electrical Requirements: Electric: 240V, 30 Amps; Power Outlet Location: Within 48" of Either Side; Plug Type: 4-Wire (Cord Required)

LAUNDRY KEY DIMENSIONS AND INSTALLATION REQUIREMENTS

Model / Color	Product Dimensions (W x H x D)	Cutout Dimensions (W x H x D)	Installation Requirements
WashTower™			
WSEX200HNA (Electric Dryer) – Noble Steel WSGX201HNA (Gas Dryer) – Noble Steel	27" x 74 3/8" x 32 3/4"	29" x 74 5/8" x 36 3/4"	Electrical Requirements – Washer: 120V, 10 Amps; Dryer: 120V, 15 Amps (Gas), 240V, 30 Amps (Electric); Power Outlet Location: Within 60" of Either Side of Unit; Plug Type – Washer: 3-Prong (Cord Attached to Unit), Dryer: Gas: 3-Prong (Cord Attached to Unit), Electric: 4-Wire (Cord Required)
WKEX200HBA (Electric Dryer) – Black Steel WKGX201HBA (Gas Dryer) – Black Steel WKEX200HWA (Electric Dryer) – White WKGX201HWA (Gas Dryer) – White	27" x 74 3/8" x 30 3/8"	29" x 74 5/8" x 34 3/8"	Electrical Requirements – Washer: 120V, 10 Amps; Dryer: 120V, 15 Amps (Gas), 240V, 30 Amps (Electric); Power Outlet Location: Within 60" of Either Side of Unit; Plug Type – Washer: 3-Prong (Cord Attached to Unit), Dryer: Gas: 3-Prong (Cord Attached to Unit), Electric: 4-Wire (Cord Required)
WKE100HVA (Electric Dryer) – Graphite Steel WKG101HVA (Gas Dryer) – Graphite Steel WKE100HWA (Electric Dryer) – White WKG101HWA (Gas Dryer) – White	27" x 74 3/8" x 30 3/8"	29" x 74 5/8" x 34 3/8"	Electrical Requirements – Washer: 120V, 10 Amps; Dryer: 120V, 15 Amps (Gas), 240V, 30 Amps (Electric); Power Outlet Location: Within 60" of Either Side of Unit; Plug Type – Washer: 3-Prong (Cord Attached to Unit), Dryer: Gas: 3-Prong (Cord Attached to Unit), Electric: 4-Wire (Cord Required)
All-in-One Combination Washer / Dryer			
LUWM101HWA – White	23 5/8" x 33 1/2" x 26 1/2"	25 5/8" x 33 11/16" x 30 1/2"	Electrical Requirements: 120V, 60 Hz, 10 Amps; Power Outlet Location: Within 60" of Either Side; Plug Type: 3-Prong (Cord Attached to Unit)
WM3998HBA – Black Steel	27" x 39" x 30 1/4"	29" x 39 3/16" x 34 1/4"	Electrical Requirements: 120V, 60 Hz, 10 Amps; Power Outlet Location: Within 60" of Either Side; Plug Type: 3-Prong (Cord Attached to Unit)
WM3555HVA – Graphite Steel WM3555HWA – White	(Preliminary) 24" x 33 1/2" x 22 1/4"	(Preliminary) 26" x 33 11/16" x 26 1/4"	Electrical Requirements: 120V, 60 Hz, 15 Amps; Power Outlet Location: Within 60" of Either Side; Plug Type: 3-Prong (Cord Attached to Unit)
WM3499HVA – Graphite Steel	24" x 33 1/2" x 25 1/4"	26" x 33 11/16" x 29 1/4"	Electrical Requirements: 120V, 60 Hz, 10 Amps; Power Outlet Location: Within 60" of Either Side; Plug Type: 3-Prong (Cord Attached to Unit)
WM3488HW – White WM3488HS – Silver	24" x 33 1/2" x 25 1/4"	26" x 33 11/16" x 29 1/4"	Electrical Requirements: 120V, 60 Hz, 10 Amps; Power Outlet Location: Within 60" of Either Side; Plug Type: 3-Prong (Cord Attached to Unit)




LAUNDRY KEY DIMENSIONS AND INSTALLATION REQUIREMENTS

Model / Color	Product Dimensions (W x H x D)	Cutout Dimensions (W x H x D)	Installation Requirements
Top Load Washers			
WT7900HBA – Black Steel	27" x 44 1/2" x 28 3/8"	29" x 57 1/4" x 32 3/8" (H Includes Clearance for Open Lid)	Electrical Requirements: 120V @ 60Hz; Power Outlet Location: Within 60" of Either Side; Plug Type: 3-Prong (Cord Attached to Unit)
WT7800CV – Graphite Steel WT7800CW – White	27" x 44 1/2" x 28 3/8"	29" x 57 1/4" x 32 3/8" (H Includes Clearance for Open Lid)	Electrical Requirements: 120V @ 60Hz; Power Outlet Location: Within 60" of Either Side; Plug Type: 3-Prong (Cord Attached to Unit)
WT7305CV – Graphite Steel WT7305CW – White	27" x 44 1/2" x 28 3/8"	29" x 57 1/4" x 32 3/8" (H Includes Clearance for Open Lid)	Electrical Requirements: 120V @ 60Hz; Power Outlet Location: Within 60" of Either Side; Plug Type: 3-Prong (Cord Attached to Unit)
WT7300CV – Graphite Steel WT7300CW – White	27" x 44 1/2" x 28 3/8"	29" x 57 1/4" x 32 3/8" (H Includes Clearance for Open Lid)	Electrical Requirements: 120V @ 60Hz; Power Outlet Location: Within 60" of Either Side; Plug Type: 3-Prong (Cord Attached to Unit)
WT7100CW – White	27" x 44 1/2" x 28 3/8"	29" x 57 1/4" x 32 3/8" (H Includes Clearance for Open Lid)	Electrical Requirements: 120V @ 60Hz; Power Outlet Location: Within 60" of Either Side; Plug Type: 3-Prong (Cord Attached to Unit)
WT7005CW – White	27" x 44 1/2" x 28 3/8"	29" x 57 1/4" x 32 3/8" (H Includes Clearance for Open Lid)	Electrical Requirements: 120V @ 60Hz; Power Outlet Location: Within 60" of Either Side; Plug Type: 3-Prong (Cord Attached to Unit)
Top Load Dryers			
DLEX7900BE (Electric) – Black Steel DLGX7901BE (Gas) – Black Steel	27" x 44 1/4" x 29 1/2"	29" x 44 1/4" x 34 1/2" (31 1/2" D for Side or Bottom Venting)	Electrical Requirements: Electric: 240V, 30 Amps, Gas: 120V, 15 Amps; Power Outlet Location: Within 48" of Either Side; Plug Type: Gas: 3-Prong (Cord Attached to Unit), Electric: 4-Wire (Cord Required)
DLEX7800VE (Electric) – Graphite Steel DLGX7801VE (Gas) – Graphite Steel DLEX7800WE (Electric) – White DLGX7801WE (Gas) – White	27" x 44 1/4" x 29 1/2"	29" x 44 1/4" x 34 1/2" (31 1/2" D for Side or Bottom Venting)	Electrical Requirements: Electric: 240V, 30 Amps, Gas: 120V, 15 Amps; Power Outlet Location: Within 48" of Either Side; Plug Type: Gas: 3-Prong (Cord Attached to Unit), Electric: 4-Wire (Cord Required)
DLE7300VE (Electric) – Graphite Steel DLG7301VE (Gas) – Graphite Steel DLE7300WE (Electric) – White DLG7301WE (Gas) – White	27" x 44 1/4" x 29 1/2"	29" x 44 1/4" x 34 1/2" (31 1/2" D for Side or Bottom Venting)	Electrical Requirements: Electric: 240V, 30 Amps, Gas: 120V, 15 Amps; Power Outlet Location: Within 48" of Either Side; Plug Type: Gas: 3-Prong (Cord Attached to Unit), Electric: 4-Wire (Cord Required)

LAUNDRY KEY DIMENSIONS AND INSTALLATION REQUIREMENTS

Model / Color	Product Dimensions (W x H x D)	Cutout Dimensions (W x H x D)	Installation Requirements
Top Load Dryers			
DLE7100W (Electric) – White DLG7101W (Gas) – White	27" x 44 1/4" x 29 1/2"	29" x 44 1/4" x 34 1/2" (31 1/2" D for Side or Bottom Venting)	Electrical Requirements: Electric: 240V, 30 Amps, Gas: 120V, 15 Amps; Power Outlet Location: Within 48" of Either Side; Plug Type: Gas: 3-Prong (Cord Attached to Unit), Electric: 4-Wire (Cord Required)
DLE7000W (Electric) – White DLG7001W (Gas) – White	27" x 44 1/4" x 29 1/2"	29" x 44 1/4" x 34 1/2" (31 1/2" D for Side or Bottom Venting)	Electrical Requirements: Electric: 240V, 30 Amps, Gas: 120V, 15 Amps; Power Outlet Location: Within 48" of Either Side; Plug Type: Gas: 3-Prong (Cord Attached to Unit), Electric: 4-Wire (Cord Required)
Clothes Styler / Steam Closet			
S5MSB – Black Tinted Mirror	23 5/8" x 77 1/4" x 23 3/4"	24 1/4" x 78 1/4" x 25 5/8"	Electrical Requirements: 120V, 12.5 Amps, 60Hz; Minimum Circuit Breaker Size: 15 Amp; Power Consumption: 1,500 Watts; Plug Type: 3-Prong
S3MFBN – Mirror Finish S3RFBN – Espresso (Dark Brown) S3WFBN – White	17 1/2" x 72 3/4" x 23"	18" x 74 3/8" x 24 7/8"	Electrical Requirements: 120V, 12.5 Amps, 60Hz; Minimum Circuit Breaker Size: 15 Amp; Power Consumption: 1,500 Watts; Plug Type: 3-Prong
LG SideKick™ Pedestal Washers, Pedestal Drawers & Short Pedestal			
WD205CK – Black Stainless Steel	29" x 14 1/8" x 30 7/8"	–	Electrical Requirements: 120V, 5 Amps; Power Outlet Location: Within 60" of Either Side; Power Cord: Included (3-Prong)
WD200CV – Graphite Steel	29" x 14 1/8" x 30 7/8"	–	Electrical Requirements: 120V, 5 Amps; Power Outlet Location: Within 60" of Either Side; Power Cord: Included (3-Prong)
WD100CV – Graphite Steel WD100CB – Black Steel WD100CW – White	27" x 14 1/8" x 30 3/4"	–	Electrical Requirements: 120V, 5 Amps; Power Outlet Location: Within 60" of Either Side; Power Cord: Included (3-Prong)
WDP5K – Black Stainless Steel	29" x 13 5/8" x 29 1/2"	–	–
WDP5V – Graphite Steel	29" x 13 5/8" x 29 1/2"	–	–
WDP4V – Graphite Steel WDP4B – Black Steel WDP4W – White	27" x 13 5/8" x 28"	–	–
WDPS1B – Black Steel WDPS1W – White	27" x 5 1/8" x 27"	–	–

LAUNDRY ACCESSORIES

Model	Description	For Use With
 KSTK2	Stacking Kit	29" Wide Front Load Pair WM8100HVA & DLEX8100V / DLGX8101V
 KSTK1	Stacking Kit	27" Wide Pairs
 383EEL9001L	Side / Bottom Venting Kit	29" Wide Front Load Dryers DLEX8100V / DLGX8101V
 3911EZ9131X	Side / Bottom Venting Kit	27" Wide Front Load Dryers, Top Load Dryers, WashTowers
 383EEL3002D / LPK1	LP Conversion Kit	Front Load Gas Dryers, Top Load Gas Dryers, Gas WashTowers



LG BUILDER

REFRIGERATION

DISHWASHERS

COOKING

LAUNDRY

ADD-ONS

LG BUILDER

REFRIGERATION

DISHWASHERS

COOKING

LAUNDRY

ADD-ONS



AIR PURIFIER FEATURES



ALL-IN-ONE AIR PURIFIER & HUMIDIFIER

Watering System

Watering Engine rotates at high speed spraying 18L water in an hour to infuse moisture in inhaled air. Atomized water is dispersed from the air purifier to create a comfortable humidity level.

Smart Indicator and Smart Lighting

Check air quality easily with 4 stylish colors and detect the amount of various airborne particulate matter (PM10, PM2.5 & PM1.0) with a PM 1.0 Sensor.

Pure Intelligence is in the Air

Achieve air revitalization with the simplicity and convenience of LG SIGNATURE air purifier's SmartThinQ™ technology.



Inverter Motor

The LG SIGNATURE air purifier features 10 years of Inverter motor warranty.

PURICARE™ 360° AIR PURIFIER

AAFA Certified LG Air Purifiers

LG is proud to offer Certified asthma & allergy friendly® PuriCare™ air purifiers that remove airborne allergens, such as dust, pollen and pet dander.

360° of Purification

A unique purification method promotes 360 degrees of clean air delivery, including areas low to the ground where infants and toddlers can reap the rewards.



Boost Your Air Delivery

The Clean Booster delivers clean air farther (up to 24 feet*) and ensures more even distribution.

Know the Air Quality, Right Now

The intelligent LED indicator system atop the LG PuriCare™ 360° Air Purifier changes from red to orange to yellow to green as the indoor air quality improves, a visual indication of its effective performance.

*Test by LG International lab & KIMM, Korea institute of machinery and materials.

DEHUMIDIFIER FEATURES

Draining Made Easy

With a built-in drain pump, LG Dehumidifiers can continuously drain water directly into a sink, out a window or down a drain.

Everyday Ease

Finally, a dehumidifier that's effortless for everyday use. LED Display—A large clear display helps you check and control humidity levels in your home. Convenient Moisture Removal—Maintenance is a no fuss affair with a convenient water bucket and tray handle. Mobile Design—Four smooth rolling wheels mean it can be moved without breaking a sweat.

Think of the Possibilities (UD501KOJ5 Only)

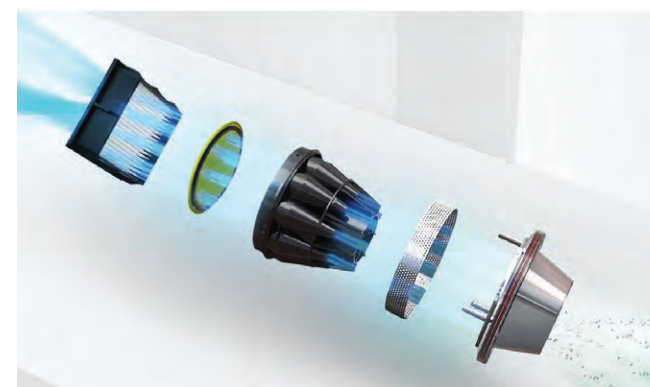
Expand the limits of your dehumidifier with the LG ThinQ® app. Start or stop the dehumidifier, monitor bucket capacity and get notifications all from your smartphone.

Designed with Safety in Mind

Safety is a top priority for LG. That's why the LG Dehumidifier was designed with features to promote safe dehumidification, such as a Safety Standby Mode that prevents overheating, and internal components that are made of thermally resistant materials, such as glass, fiber, and silicon housed in a steel structure.



VACUUM FEATURES



Powerful Enough to be Your Primary Vacuum

High performance Smart Inverter Motor™ with Axial Turbo Cyclone delivers incredible suction power.

The Brains Behind the Clean

Built-in intelligence analyzes & remembers the details of your space for more efficient, effective cleaning.

Deeper Cleaning, Fewer Tangles

The Power Nozzle with anti-tangle brush lifts dirt, dust & hair from a variety of surfaces.

Clean Anytime With Ultra-Quiet Performance

Vacuum during dinner or while watching TV with powerful cleaning performance that's also among the quietest.

Filters Out Dust, Dirt and Allergens

Breathe a little easier—True HEPA filter layer traps 99.97% of particles as small as 0.3*. Captures fine dust, ultra fine dust and allergens.

Removable and Washable Filters

Easily remove dirt build-up with water to maintain airflow & help keep the vacuum running at its best.

Fast Emptying with Less Mess

Convenient dust bin removes for easy emptying with the press of a button.

Customized Cleaning on Your Schedule

From automatic start times to smart cleaning modes to convenient voice alerts, LG makes it simple to keep your home clean.



*Based on third-party testing according to standard ASTM F1977-04

AIR PURIFIERS



LG SIGNATURE

AM501YWM1

All-in-One Air Purifier & Humidifier

- 318 sq. ft. Coverage
- Watering System (18L water per / hr)
- Filter System:
 - Black PM 1.0 (Particulate Matter) Filter
 - Black Deodorizing Filter
- Rain View Mirror
- AM501YWM1 – White

- Smart Indicator
- Smart Lighting
- Easy Bucket (Trickle Watering)
- Smart Drying
- ThinQ® Technology



AS560DWRO

PuriCare™ 360 Dual Filter Air Purifier with Clean Booster

- 360° Purification
- Clean Booster
- True HEPA Filter
- PM 1.0 (Particulate Matter) Sensor
- Smart Indicator
- ThinQ® Technology with Google and Amazon Alexa Compatibility
- AS560DWRO – White

- LoDecibel™ Quiet Operation
- Inverter Motor – 10 Year Warranty
- Stylish Design
- Filter Replacement Alarm
- Child Lock



AS330DWRO

PuriCare™ 360 Single Filter Air Purifier with Clean Booster

- 360° Purification
- Clean Booster
- True HEPA Filter
- PM 1.0 (Particulate Matter) Sensor
- Smart Indicator
- ThinQ® Technology with Google and Amazon Alexa Compatibility
- AS330DWRO – White

- LoDecibel™ Quiet Operation
- Inverter Motor – 10 Year Warranty
- Stylish Design
- Filter Replacement Alarm
- Child Lock

DEHUMIDIFIERS



UD501KOJ5

PuriCare™ 50 Pint Dehumidifier with Drain Pump & Wi-Fi

- Built-in Drain Pump Feature
- Wi-Fi Capability (LG ThinQ®)
- Dehumidification (Pts / Day) 50
- Convenient to Use Water Bucket & Ergonomic Handle
- UD501KOJ5 – Black

- Designed with Safety in Mind
- Full Bucket Indicator with Auto Shut-Off
- Washable Filter



UD501KOG5

PuriCare™ 50 Pint Dehumidifier

- Dehumidification (Pts / Day) 50
- Convenient to Use Water Bucket & Ergonomic Handle
- Designed with Safety in Mind
- Full Bucket Indicator with Auto Shut-Off
- Washable Filter
- UD501KOG5 – Black

VACUUMS



R975GM1

LG CordZero™ ThinQ® Robotic Vacuum

- Smart Functionality with Wi-Fi
 - HomeGuard™
 - HomeView™
 - Cleaning Diary
 - Scheduled Cleaning
 - 7 Smart Cleaning Modes
 - Smart Resume Function
- 3D Dual Eye Mapping System
- Virtual Fencing
- Collision-Safe Digital Bumper
- R975GM1 – Matte Grey

- Low Noise Level
- Corner Master
- Easy-Out Dust Bin
- Sweep + Vacuum + Large Slide-in Mop
- Touch Controls
- Long Lasting Battery
- Remote Control (Android / iOS App & Physical Remote)
- Battery Charge Docking Station
- Voice Alerts



The Solution for the Cookie-Cutter Kitchen

From condominiums to upscale suburban homes, we have a kitchen solution for you. Now with Signature Kitchen Suite, LG SIGNATURE, LG STUDIO, and LG in our portfolio, we take pride in matching your passion with proven performance and design. Any one of our four brands can bring your vision to life with our innovative kitchen designs for every homeowner imaginable.

LG BUILDER

LGBuilder.com

Create a space your customers will love. Explore LG products, packages and discounts, request a quote—and find the perfect appliances for any project. Visit LGBuilder.com or contact your LG Builder Account Manager to learn more.

LG BUILDER

