

# NAHB The New American Home<sup>®</sup> 2022

TNAH<sup>®</sup>  
NAHB The New American Home

**PROBUILDER**  
PROFESSIONAL BUILDER  
THE OFFICIAL MEDIA PARTNER OF NAHB



# TABLE OF CONTENTS

- 4 TNAH Build Team
- 5 About TNAH 2022
- 9 Architectural Design
- 10 Outdoor Living
- 12 Interior Design
- 14 Professional Kitchen
- 16 Master Suite
- 18 Efficient Means & Methods
- 20 Performance
- 22 Technology
- 24 Thank you to our Partners

## SHUTTLE BUS INFORMATION

Registered 2022 IBS and KBIS attendees can tour The New American Home (TNAH) exhibition home daily during the show via complimentary shuttle buses departing every half hour from the Orange County Convention Center. The shuttle bus tickets will be distributed on a first-come, first-served basis. For the best opportunity of securing tickets, visit the TNAH/TNAR booth early located in the Hall C lobby (opens at 7:30am) on the day you want to take the tour and pick up your ticket for the time that day you want to go. Shuttle buses depart every 30 minutes from the OCCC in the back of the West Hall beginning at 8:30 a.m. until 3:00 p.m. Tuesday through Thursday. In an effort to keep our attendees and staff safe, attendees will be required to follow the published health and safety protocols.

(Masks will be available at the OCCC if needed.)

## SHUTTLE BUSES RECOMMENDED, BUT IF YOU DECIDE TO DRIVE THE ADDRESS IS:

13782 Rosbash Alley, Orlando, FL 32827

# A THANK YOU TO OUR SUPPLIERS

## PLATINUM

- |                                      |                          |                                  |
|--------------------------------------|--------------------------|----------------------------------|
| <b>M</b> Eaton                       | <b>M</b> LG Laundry      | <b>M</b> LX Hausys America, Inc. |
| <b>M</b> LG Electronics U.S.A., Inc. | <b>M</b> LG Solar U.S.A. | <b>M</b> Signature Kitchen Suite |
| <b>M</b> LG HVAC                     |                          |                                  |

## GOLD

- |                     |                     |                  |
|---------------------|---------------------|------------------|
| <b>M</b> ClosetMaid | <b>M</b> Kohler Co. | NordicTrack/iFit |
|---------------------|---------------------|------------------|

## SILVER

- |                                |                           |                                 |
|--------------------------------|---------------------------|---------------------------------|
| <b>M</b> LP Building Solutions | <b>M</b> Sherwin-Williams | <b>M</b> Wellborn Cabinet, Inc. |
|--------------------------------|---------------------------|---------------------------------|

## BRONZE

- |                                        |                                             |                                               |
|----------------------------------------|---------------------------------------------|-----------------------------------------------|
| <b>M</b> Armstrong Flooring            | Clopay                                      | <b>M</b> Ply Gem Windows and Doors            |
| Belwith Keeler Decor Solutions         | Crestron Electronics                        | <b>M</b> Propane Education & Research Council |
| Benjamin Obdyke                        | <b>M</b> Fi-Foil Company, Inc.              | Rinnai America Corporation                    |
| <b>M</b> Brown Jordan Outdoor Kitchens | <b>M</b> LiftMaster                         | <b>M</b> StruXure                             |
|                                        | <b>M</b> OmegaFlex/ TracPipe Counter Strike | TruStile Doors                                |
|                                        | <b>M</b> Phantom Screens                    | VintageView                                   |

## LSC CONTRIBUTORS

- |                        |                           |                                 |
|------------------------|---------------------------|---------------------------------|
| <b>M</b> 84 Lumber     | <b>M</b> Bosch Appliances | <b>M</b> DuraVent/Hart & Cooley |
| <b>M</b> AGS Stainless | <b>M</b> Broan-NuTone     |                                 |

## PARTICIPATING COMPANIES

- |                                            |                                           |                            |
|--------------------------------------------|-------------------------------------------|----------------------------|
| Airmada Drying Solutions                   | Euro-Wall                                 | Samantha's Walls           |
| American Outdoor Living                    | Fabricut                                  | ScenaVR                    |
| American Residential Products              | Federal Brace                             | Schluter Systems LP        |
| AutoHot                                    | FF Systems                                | SH Modern                  |
| Bedrock Wireless                           | Focal Point Landscaping                   | Solar Source               |
| Central Florida Acrylic Decking            | Greg Basom Framing                        | TileBar                    |
| Circa Lighting                             | Heat & Glo Fireplaces                     | The Tile Shop              |
| Coating Designs, LLC                       | Herx & Associates                         | Titebond Brand             |
| Concrete Options                           | Infratech                                 | Tile Supply, Inc           |
| D & D Garage Doors                         | ISI Design & Installation Solutions, Inc. | Total Home Roofing         |
| Dewitt Custom Concrete                     | Lyfe Outdoor Comfort Solutions            | Trex                       |
| Emerson Commercial & Residential Solutions | Massey Services                           | Two Trails                 |
| Emser Tile                                 | Millenia Bath                             | Versatex                   |
| Emtek                                      | Nona Glass                                | Weather Barrier Specialist |
| Environmental Water Systems                | Northwest Door and Hardware               | Whiteboards R Us, LLC      |
| Equifer                                    | Residential Elevators, Inc.               | Wired Technologies Group   |
| Euclid Chemical Company                    | RH Peterson Co                            | York Wallcoverings         |

**M** = Leading Suppliers Council Member

# TNAH 2022 BUILD TEAM



Left to Right Standing:

**Jack Prior**  
Project Manager  
Envy Homes

**Tucker Bernard**  
Executive Director  
NAHB-LSC/TNAH/TNAR

**Steve Earl**  
Owner  
Envy Homes

**Jamahl Gibbons**  
Manager  
IBS Show Homes

**Bill Owens**  
TNAH 2022 Chairman

Left to Right Sitting Photo:

**Jennifer Sullivan**  
Design & Selection Assoc.  
Envy Homes

**Serena Hahn**  
CEO  
Envy Homes

**Kyle Kelley**  
Project Manager  
Envy Homes



**Ed Binkley**  
Associate / Design  
Director  
BSB Design, Inc.



**Michael Kramer**  
Principal  
BSB Design, Inc.



**Steve Moore**  
Senior Partner  
/Director of Marketing  
BSB Design, Inc.



**Steve Krob**  
Market Development  
Director  
BSB Design, Inc.



**Drew Smith**  
COO  
Two Trails, Inc., Energy  
Verifier and Consultant



**Jeff Bankert**  
VP, Executive Producer,  
NAHB Media/Structure  
Productions



**Darren DiPatri**  
Manager, Production,  
NAHB Media/Structure  
Productions



**Joe Duffus**  
CEO  
Builders Design



**Alyssa Johansen**  
Creative Director  
Builders Design



**Britney Gilley**  
VP of Design  
Builders Design



**Rich Binsacca**  
Editor-in-Chief  
SGC Horizon LLC



**Bill Black**  
Director of Sales  
SGC Horizon LLC



**Judy Brociek**  
Director of Events  
SGC Horizon LLC

## ABOUT TNAH 2022

The 39th edition in The New American Home® (TNAH) series displays a designer and builder's vision of a modern, coastal home that exhibits innovative products for the building industry. Laureate Park at Lake Nona, a new sub-division, was the best location for this home because the unique community values design and technologies while promoting a healthy lifestyle for its residents. This ever-evolving exhibition home is sponsored by the National Association of Home Builders and presented by the NAHB Leading Suppliers Council and *Pro Builder* magazine. Throughout the entire design and construction process, a talented team of building professionals brings new concepts and innovative construction techniques together to create a masterpiece for the housing industry. The New American Home®, a high-performance home raises the bar every year by redefining modern living and featuring the latest in design trends and cutting-edge technology.

Photos courtesy of Jeffrey A. Davis Photography, Inc.

# THE NEW AMERICAN HOME 2022

The New American Home 2022 offers luxury living in Florida's Laureate Park at Lake Nona. Tavistock Development Company created this mixed-use community to display multi-story homes, townhomes and bungalows that are complemented by innovative technology and modern design features. The goal for Envy Homes, BSB Design and Builders Design was to create a modern-day masterpiece that was both readily attainable and easily reproducible.

The New American Home integrates a variety of tranquil hues into a "Miami Deco" design to create an exhibition home with an upscale coastal appearance. Builders Design used their design expertise to produce a balanced ensemble of unique colors and concepts. This assemblage of innovative design elements displays some of the latest trends in the housing industry and demonstrates how space efficiency can improve textures, patterns and sizing throughout the home.

The first floor includes a three-car garage, an outdoor living experience featuring a pool and an outdoor kitchen, a great room area featuring unique art pieces surrounding a fireplace, and a culinary showcase featuring an array of appliances from Signature Kitchen Suite coupled with a beautiful cabinetry selection from Wellborn Cabinet, Inc. The second floor is dedicated to the master suite with a large master bedroom and spa-like master bath that is outfitted with Kohler's faucets, sinks and a state-of-the-art shower experience.

ClosetMaid's high quality closet system displays an organized arrangement for accessories and clothing in the walk-in closet. The flex space can be utilized as an indoor fitness experience with NordicTrack/iFit's interactive connected health and fitness products. The third floor is the perfect setting for an entertainment experience that captures the scenic views of Laureate Park. The outdoor kitchen area displays high quality, powder coated cabinetry from Brown Jordan Outdoor Kitchens. The Pergola X from StruXure provides quality protection from the weather with advanced technology that can open, close, pivot and slide to match the needs of your guests.

OmegaFlex's TracPipe CounterStrike flexible gas piping utilized their AutoSnap fitting as a method to help against lightning strikes. Ply Gem's Windows and Doors enhanced the energy efficiency of the home and provided a seamless appearance and transition between indoor

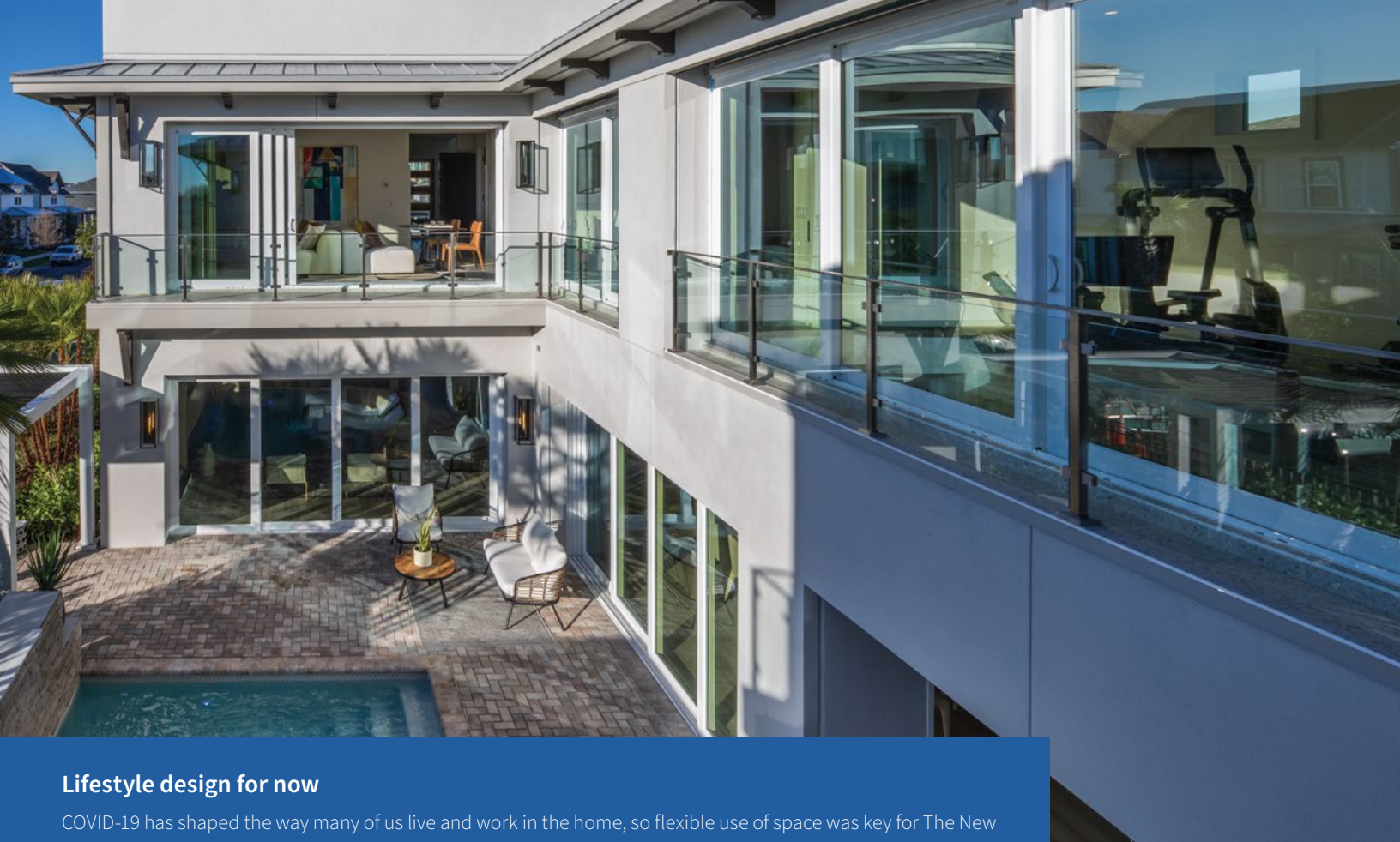
and outdoor environments. Eaton was featured throughout the home with an array of innovative products including an EV charging solution, USB charging receptacles, loadcenters, and Wi-Fi Smart Devices. Their new Wi-Fi smart switches, receptacles and dimmers can be operated and synced with an Amazon Alexa device for full control and usability.

The importance of a healthy home has increased due to the global pandemic. The New American Home showcases advancements in technology that enhance the air quality of the home. Broan-NuTone Overture™ system, fully automated with room sensors and smart plugs to detect changes in CO2 and other air quality measures and activate the air filtration system when groups come together. Additionally, Sherwin Williams SuperPaint with Air Purifying Technology combined with paint colors from the Living Well collection puts health-supporting innovations into the very walls with a formula that help pull toxins directly from the air. The innovative LG Styler® helps to eliminate outside contaminants from clothing and personal items. Envy Homes and BSB Design incorporated pandemic-inspired features like the package drop outside the home shows how health and safety can be integrated into the design.

The LG's Multi-V, Variable Refrigerant Flow system provides space conditioning throughout the home and minimizes efficiency losses. LP WeatherLogic® Air & Water Barrier is a Structural I rated wall and roof sheathing panel that offers protection against air and water penetration. The panels provide permeability and allow moisture to dry, providing lasting protection for the home. Fi-Foil's M-Shield is an insulation solution that contains no cellulose eliminating the food source for mold growth.

The New American Home 2022 has overcome the challenges plaguing the industry including labor shortages, permitting challenges and supply chain issues. This has been an incredible learning experience from new products to the now current needs of everyday life. As part of the International Builders' Show, this home will proudly showcase the latest products and technologies from the Leading Suppliers Council (LSC), part of the National Association of Home Builders of America.





# ARCHITECTURE DESIGN

With the use of natural lighting and a clean aesthetic, the home boasts a summer vibe year-round. Many of the bold designs throughout The New American Home can be easily reproduced within most new home projects regardless of budget. The multi-use spaces inside and outside of the home present a variety of options for entertaining guests. This includes the rooftop terrace, the gym/lounge area and the game room.

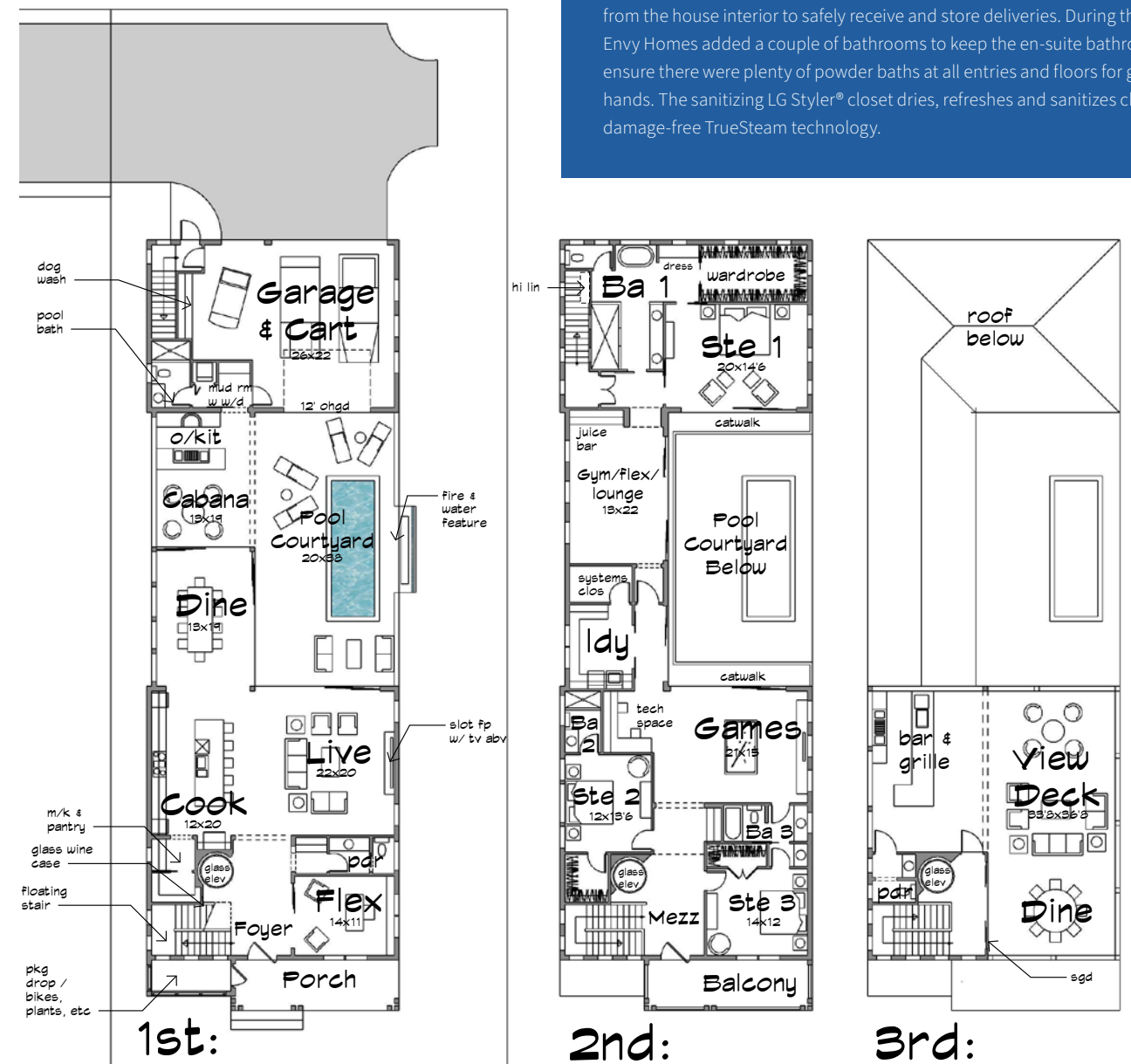
The catwalk overlooking the pool courtyard below presents scenic views of the surrounding Lake Nona community. The outdoor kitchen on the first floor exhibits state-of-the-art outdoor kitchen products from Brown Jordan Outdoor Kitchens, creating a vibrant ambiance for the summer kitchen. The standing seam metal roof from Cornerstone Building Brands provides structural support and durability for LG's NEO N solar panels to maximize solar output on the home, providing renewable energy and helping the home achieve net-zero status.

## Lifestyle design for now

COVID-19 has shaped the way many of us live and work in the home, so flexible use of space was key for The New American Home. From multi-use rooms to health and fitness spaces, an arcade-style game room, and a tech center for kids, the builder wanted exhibit post-pandemic concepts to represent the building industry today.

## Pathogens stop at the door

The New American Home is designed to address how the pandemic change our personal lives and the housing industry. The front of the home has a package drop that is separate from the house interior to safely receive and store deliveries. During the design process, Envy Homes added a couple of bathrooms to keep the en-suite bathrooms private and ensure there were plenty of powder baths at all entries and floors for guest to wash their hands. The sanitizing LG Styler® closet dries, refreshes and sanitizes clothing with the damage-free TrueSteam technology.



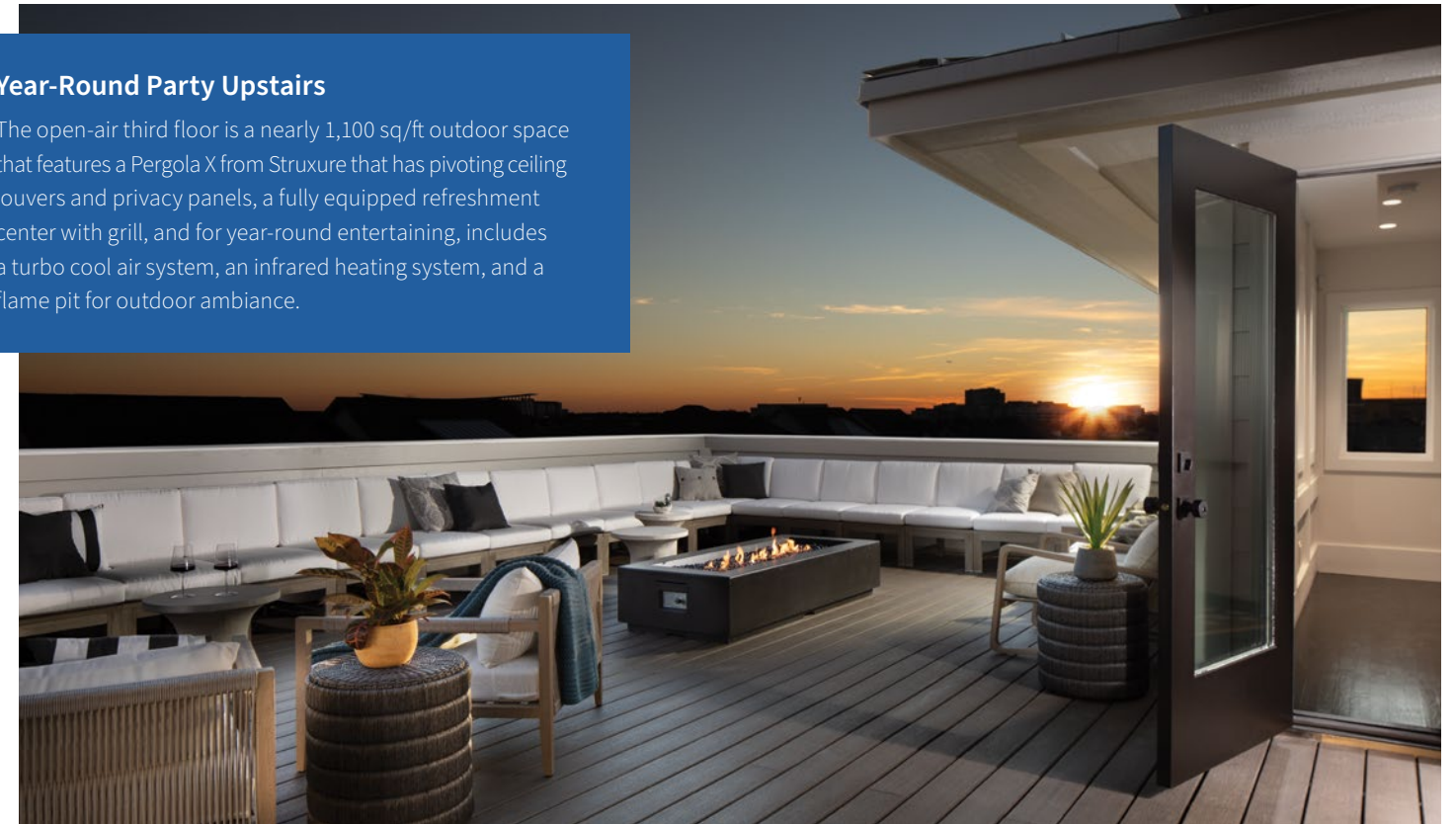


### Indoor/outdoor “spa” cabana experience

For at-home tranquility anytime, the central courtyard features an outdoor spa-style pool with a sun shelf, floating table, and waterfall features. Flanked by Cabana X from StruXure and lush landscaping, it's a refuge from the outside world but centrally placed to be seen and enjoyed from almost anywhere in the home.

### Year-Round Party Upstairs

The open-air third floor is a nearly 1,100 sq/ft outdoor space that features a Pergola X from StruXure that has pivoting ceiling louvers and privacy panels, a fully equipped refreshment center with grill, and for year-round entertaining, includes a turbo cool air system, an infrared heating system, and a flame pit for outdoor ambiance.



The New American Home 2022 exhibits a responsive design with highly flexible outdoor living features. The rooftop deck provides additional living space and opportunities to entertain guests and enjoy the scenic views throughout Lake Nona. The pool courtyard displays top-of-the-line outdoor appliances, including natural gas grills and stainless-steel cabinetry. Both Envy Homes and BSB Design, Inc. have incorporated an attainable design concept to produce a contemporary home that optimizes space and energy efficiency.

## OUTDOOR LIVING



### Brown Jordan Outdoor Kitchens

OUTDOOR KITCHENS

Elements from Brown Jordan Outdoor Kitchens produced a stainless-steel cabinetry ensemble, with maintenance-free powder coat finishes, that were enhanced to ensure maximum durability and strength for outdoor weather conditions.



### Phantom Screens

MOTORIZED SCREENS

The retractable solar shades from Phantom Screens reduce building heat gain, manage daylight/UV and help retain climatized air in covered outdoor spaces.



### StruXure

CABANA X

The Cabana X from StruXure provides a unique space to enjoy the outdoors while remaining protected from the elements. This 10'x10' structure provides limitless configurations with complete control and privacy depending on the setting.





### Ply Gem

#### WINDOWS AND DOORS

The Ply Gem 1570 Vinyl fixed windows feature an overall LC 50 rating and a sturdy construction. Integral twins, triplets and quads utilize a common mull for improved water performance and a seamless appearance.

### Sherwin-Williams

#### PAINT

Sherwin-Williams SuperPaint® with Sanitizing Technology, part of Sherwin-Williams Living Well™ collection, delivers continuous and ongoing antibacterial action.

This EPA-registered paint has been vigorously tested and is proven to kill 99.9% of staph and E. coli on painted surfaces within two hours of exposure on painted surfaces. The effectiveness lasts for up to four years as long as the integrity of the surface is maintained.

### VintageView

#### MODERN WINE RACKING

The modernized cellar design from VintageView creates a unique wine racking solution with a stylish, contemporary design.

## INTERIOR DESIGN

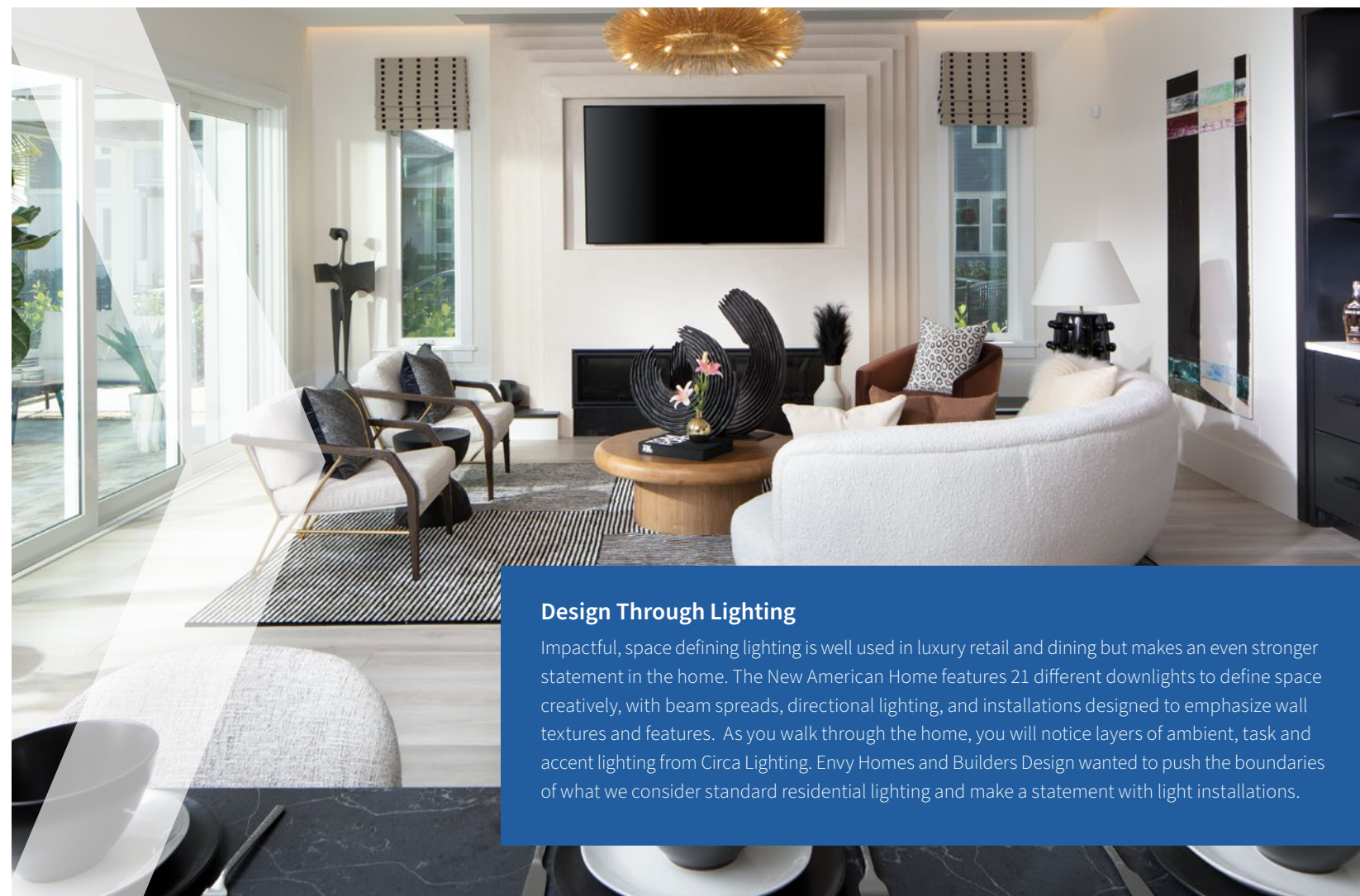
The New American Home 2022 integrates a variety of tranquil hues into a “Miami Deco” design to create an exhibition home with an upscale coastal appearance. This assemblage of innovative design elements displays some of the latest trends in the housing industry. Builders Design used their design expertise to produce a balanced ensemble of unique colors and concepts.

The finishes in the home exhibit the Art Deco influence with the use of reeded glass, impactful tile and brilliant cabinet hardware. In the foyer, Builder Design created impact with custom case moldings, ceiling details, innovative lighting fixtures and an under-stair, glass-enclosed wine cellar. The modern appliances from Signature Kitchen Suite blend well with the layered finishes on Wellborn’s cabinetry. The lustrous quartz countertops from LX Hausys cast a subtle brilliance that adds warmth and glamour to this showcase home.

The open dining area is host to an array of incredible lighting features from Circa Lighting as well as aesthetically pleasing art pieces that bring elegance and creativity to the space. The dynamic game room provides a beautiful view of the courtyard pool below through the well-crafted sliding glass doors from Cornerstone/Ply Gem. This outdoor space features an entertaining area with a unique seating layout as well as a stainless-steel outdoor cabinetry from Denver.

The primary suite flex room has a fitness area that comes to life with a display of interactive fitness equipment from NordicTrack/iFit. The master suite showcases the modern deco style through a detailed trim wall with large scale art, an incredible inset lighting detail that wraps from the wall to the ceiling and a built-in nightstand to provide function and flexibility.

Builder Design utilized the concept of the rooftop deck area to showcase a dramatically scaled seating arrangement that includes areas for enjoying an outdoor fire pit, dining and lounging. The outdoor kitchen area is covered with a Pergola X product from StruXure to provide overhead protection from the elements.



### Design Through Lighting

Impactful, space defining lighting is well used in luxury retail and dining but makes an even stronger statement in the home. The New American Home features 21 different downlights to define space creatively, with beam spreads, directional lighting, and installations designed to emphasize wall textures and features. As you walk through the home, you will notice layers of ambient, task and accent lighting from Circa Lighting. Envy Homes and Builders Design wanted to push the boundaries of what we consider standard residential lighting and make a statement with light installations.



The culinary showcase exhibits an open floor plan allowing the living room and dining room to blend together with the kitchen. This great room concept helps to maximize space and increase functionality in the living area. The seamless transition between the outdoor living area and the kitchen demonstrates the home's flexibility and enhances the atmosphere of openness.

**LX Hausys**  
**COUNTERTOPS**  
 The Minuet Brushed finish from LX Hausys features alabaster with grey marbling, revealing a rich and luxurious feel. The Viatera Quartz Surfaces contain up to 93% natural quartz, which offers durability and higher tensile strength.

**Signature Kitchen Suite**  
**APPLIANCES**  
 Signature Kitchen Suite offers a full line of luxury built-in kitchen appliances to entice the appetites of the most discerning home buyers. These state-of-the-art high-performance appliances deliver the ultimate precision-cooking experience.

**Wellborn**  
**CUSTOM CABINETRY**  
 The Aspire collection from Wellborn Cabinet, Inc. is a full access frameless brand that includes wood, decorative laminate textured veneers and high and matte gloss acrylic doors supporting an increasing trend of modern design.

# PROFESSIONAL KITCHEN



**Kohler**  
**SINKS AND FAUCETS**  
 The brilliant Crue Collection from Kohler displays a stunning, modern-brushed brass finish for the culinary showcase. The Kitchen Faucet has a high-arch 360° rotating swing spout offers vertical clearance for filling pitchers and glasses when entertaining.

**Armstrong Flooring**  
**FLOORING**  
 Armstrong Flooring's Empower™ Reinforced Mineral Rigid Core outperforms traditional rigid core with its premium visuals and best-in-class protection that provide builders with the look of hardwood flooring. The exclusive Diamond 10° Technology provides ultimate stain-proof protection."

**Belwith Keeler**  
**DECOR SOLUTIONS**  
 The Monroe collection from Belwith Keeler captures the essence of Marilyn Monroe by suggesting classic and timeless beauty with a little bit of glamour and curiosity

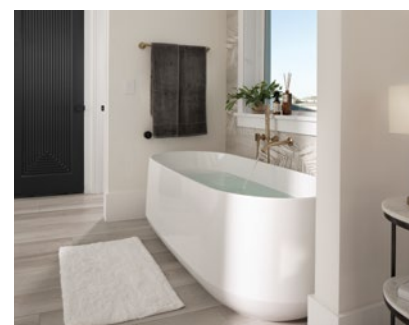






## MASTER SUITE

The master suite was designed with a focus on flow and maneuverability. The suite overlooks the pool courtyard below with a breathtaking view through the sliding glass doors from Cornerstone/Ply Gem. The master bathroom is adjacent to the walk-in wardrobe, allowing the homeowner to conveniently move between the rooms with complete privacy. It provides a unique steam shower experience complete with lustrous bathroom fixtures and pristine finishes.



### ▼ Kohler

#### BATHROOM FIXTURES

The Ceric freestanding bath from Kohler expresses contemporary warmth and simplicity. This distinct style and flexibility provide an esthetically attractive appearance for the master bathroom.

### ▼ Closetmaid

#### STORAGE AND ORGANIZATION SYSTEMS

The Mastersuite® collection from ClosetMaid exhibits a combination of robust, industrial grade engineered wood with a highly durable melamine finish and solid wood drawers. The Natural Blonde finish featured in the home contributes to the warm, calming hues throughout the home.



### TruStile

#### INTERIOR DOORS

The interior doors from TruStile are created with incredible craftsmanship and innovative design options. The Tambour Door Collection combines stile and rail construction with state-of-the-art CNC routing technology for a uniquely contemporary look.



### Eaton

#### SWITCHES

Eaton provides products that manage power and help to keep the home safer, smarter and energy efficient. Eaton's broad selection of Wi-Fi smart switches, receptacles and dimmers can be easily set up with the Amazon Alexa App.



### NordicTrack/iFit

#### EXERCISE EQUIPMENT

The S22i Studio Cycle from NordicTrack/iFit brings innovation to your cycling experience including an enhanced auto incline/decline mechanism, premium 30 W sound system and a hybrid SPD+ toe clip pedals.



## Framing Techniques

The builder, Envy Homes, prefers to use engineered lumber in their construction projects and brought this time-efficient product to The New American Home. The benefits of the straight-and-true engineered products bring clean lines and measurements that trickle down through other trades, from drywall to trim to shades and blinds.



### Benjamin Obdyke

#### ROOF AND WALL PROTECTION

Slicker® MAX is a vertically channeled rainscreen that includes a filter fabric, providing enhanced UV and compression resistance. Slicker MAX is ideal for providing drainage and ventilation behind fiber cement, stone veneer and stucco applications.



### LG HVAC

LG indoor and outdoor units provide quiet operation and sleek and stylish design with compact outdoor unit footprints, giving builders the flexibility to design an HVAC system around the needs of the specific project.

## EFFICIENT MEANS & METHODS



### Fi-Foil Company

#### INSULATION

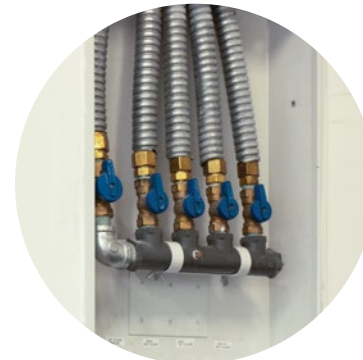
Flex Foam's Low-e aluminum reinforced facing reduces up to 95% of radiant heat transfer. Use alone or as part of a system with ¾-inch enclosed air space and reflective insulation companion products AA2 or M-Shield to gain R5.7 for the assembly.



### LP® SmartSide®

#### TRIM AND SIDING

The lap siding from LP® SmartSide® is available in 16' lengths leading to fewer seams in addition to faster installation. The engineered wood siding offers advanced durability, with cedar and smooth textures, to enhance protection against the volatile weather in Florida.



### Omega Flex

#### GAS PIPING

CounterStrike® CSST has been designed with a jacket material that has energy dissipating properties that will protect the stainless-steel pressure liner as well as other system components in case the flexible piping becomes energized by lightning.



### Propane Education & Research Council

#### PROPANE

Propane provides jobsite flexibility by providing gas energy for portable generators and construction heaters during the project. Propane Education & Research Council used their connections and services to help provide water heaters, fireplaces and appliances within the home.



### Rinnai

#### TANKLESS WATER HEATERS

This incredibly efficient tankless water heater from Rinnai utilizes less energy and offers reduced maintenance with endless hot water. Using these water heaters eliminates standby loss which can reduce overall energy costs.

# PERFORMANCE

## Thermal Shell

- Unvented and air-sealed attic with open-cell polyurethane spray-foam insulation (R-19).
- Ply Gem Windows with low-e coating, argon gas fill limits solar heat gain and optimizes air tightness (U-factor average .30 and SHGC average of .25).
- Exterior CMU walls insulated using injected core-fill foam insulation and Hy-Fi reflective wall insulation (R-12).
- AeroSeal's AeroBarrier aerosol thermal envelope sealer utilized to further reduce envelope leakage, projected to have a infiltration rate of 3.5 ACH (50)
- Large overhangs to aid in protecting the home from the harsh Florida sun.
- Light colored exterior to assist in reflecting the sun.



## HVAC

- LG's Multi-V, Variable Refrigerant Flow (VRF) System provides space conditioning.
- Mechanical ventilation provided by Broan-Nutone
- Space conditioning system located entirely within the conditioned space, minimizing any conditioned air leaking to the exterior.

## Energy Efficiency and Innovation

The New American Home (TNAH) 2022 is a symbol of energy efficiency and innovation, boasting innovative products from manufacturers all over the world. TNAH 2022 is designed to exceed the requirements for certification to the Emerald level of the National Green Building Standard™. Its energy-efficient features can be used in hot-climate homes at any price point and achieve similar energy savings. The home is targeting the EPA ENERGY STAR® for Homes, DOE's Zero Energy Ready Home, as well as the EPA's Indoor airPLUS certifications.

Without the solar array, this home has a projected HERS Index of 61, meaning it will be 39% more efficient than the average new code-built home. The home will incorporate high-efficiency LG solar panels capable of providing 100% of the annual electric energy needs for the home. With this solar array, the home's HERS Index is projected at -15 with 13.68 kW of solar power.



## Water Heaters

- Rinnai ENERGY STAR®-rated tankless water heaters with insulated hot water lines utilized throughout the project to reduce heat loss and increase efficiency.
- Enovative AutoHot on demand hot water recirculating pumps.

## Electrical

- 100% energy-efficient LED lighting for all interior and exterior lighting
- LG Signature ENERGY STAR®-rated appliances.
- ENERGY STAR®-rated variable speed pool pumps.

## Water Efficiency

In addition to energy savings, this home is designed to achieve an estimated 50% reduction from baseline in water use. This remarkable water use reduction is made possible using low-flow water fixtures, natural indigenous landscaping, and a high-efficiency irrigation system. Water saving features include:

- Kohler low-flow, EPA WaterSense certified 1.5 GPM lavatory faucets and an average of 1.28 GPF toilets provides the indoor water use reduction
- High-efficiency micro spray, driplines and irrigation controller contributed to the outdoor water use reduction

## Indoor Environmental Quality Features

- The designs and products used within The New American Home 2022 create an indoor environmental quality that enhances the health and safety of its occupants. Indoor Environmental Quality strategies include:
- Sherwin Williams Low-VOC paints and finishes and low-VOC interior adhesives and sealants
- MERV 13 space conditioning air filters
- HVAC ducts sealed during construction to prevent pollutants from construction activities from entering the system
- Whole Building ventilation system configured to allow the correct amount of fresh air into the home
- Eco-Friendly cabinets – Formaldehyde free and material certified by the Forest Stewardship Council

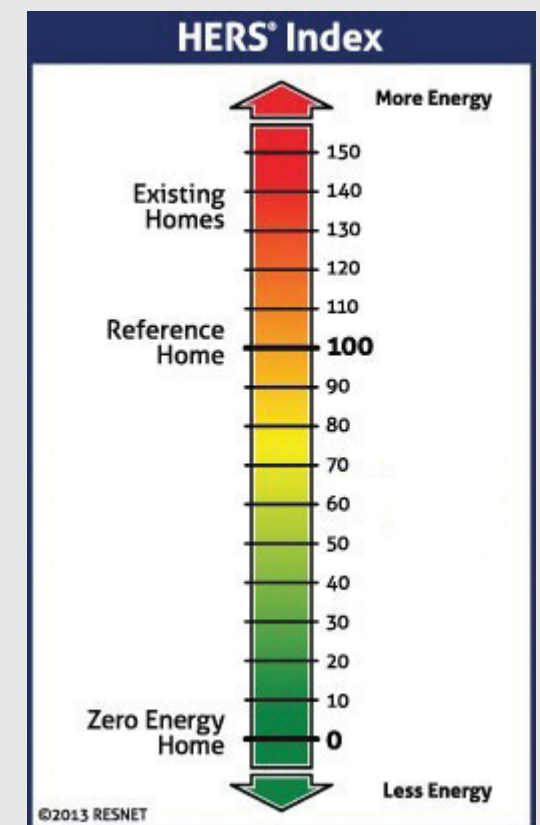
Two Trails worked closely with Phil Kean Design Group to ensure energy efficiency and innovation in The New American Home. Without the solar array, this home has HERS Index of 46.

**When factoring in the LG NeON2 V5 solar panels, the HERS Index reaches -16 on the scale.**



## LG Solar U.S.A SOLAR ARRAY

13.68 kW solar array utilizing LG's NeON2 360-watt V5 solar panels.



# TECHNOLOGY

The New American Home features a Crestron Home system designed to support the full spectrum of home automation products and solutions, ensuring unparalleled performance and reliability.

## Motorized Shades

The motorized shades provide subtle enhancements to the home's overall ambiance. Crestron motorized shades feature exclusive Digital Quiet Motor Technology (QMT™) for virtually silent operation.

## Touch Screens

Touch screens throughout the home feature agile processors, native Sonos integration, optional cameras and microphones, backlit capacitive buttons, ambient light sensors and secure mounting options.

## Reference Audio System

Crestron reference speakers and streaming audio system is precision-engineered for optimal listening experiences in every room throughout the home. The Crestron Home system helps to amplify and adjust the sound quality throughout the home through mobile devices and other remote capabilities.

## Lighting Solutions

Eaton's broad selection of wi-fi smart devices which offer reliability with unbeatable ease of setup. Every device sets up quickly and easily with the free Amazon Alexa App—no hubs or controllers are necessary. Voice-control is also available with the Wi-Fi smart voice dimmer with Alexa built-in, or by using any other device featuring Alexa built-in technology.



## Clopay

### GARAGE DOORS

Modern garage doors combine the look of real wood with key elements of contemporary architecture: clean horizontal lines with mid-century appeal, sleek windows and metallic accents. The Avante garage door from Clopay has a 2-1/8-inch-thick commercial-grade aluminum frame that is designed for long-term resilience.

## Liftmaster

### GARAGE DOOR OPENER

The Secure View™ Garage Door Opener has integrated video camera that enables the user to see the garage through a live feed. The battery backup allows you to open/close the garage door even during a power outage.

## LG

### LAUNDRY APPLIANCES

LG's laundry appliances have built-in intelligence that makes laundry more efficient and simpler. The LG Studio Styler TrueSteam® technology reduces odors and refreshes the fabric instantly with a cycle time that is within 20 minutes.

## Crestron

### SMART HOME SOLUTIONS

Crestron's leading edge automation systems connect the home with their more approachable plug-and-play system installed throughout TNAH. Selected to show the power and potential of the more affordable, scalable system, it is fully wired for future upgrades and advancements in technology.

The New American Home 2022 features incredible technology, current trends and innovative technology. This year, The New American Home is located in Laureate Park at Lake Nona, a new community located in Orlando, FL that values sustainable design and technologies while promoting a healthy lifestyle for its residents. Envy Homes collaborated with BSB Design Inc. (Architect) and Builders Design (interior Design) to create a more scalable, approachable TNAH concept that would work at a variety of price points for the mixed-use neighborhood without sacrificing quality and innovations you'd expect in The New American Home program. The market-driven elements showcase the future of home building and provide industry professionals with countless ideas that can be integrated within the scope of any new home project.

**Keeping the water out** – The coastal design created by BSB Design Inc. incorporates a mix of stucco and lap siding that has a transition in façade that breaks up the mass of the 3-story structure but creates a potential water intrusion point. Envy Homes partnered with LP Siding and Benjamin Obdyke to address those concerns. The HydroGap SA is a self-adhered water resistive barrier that can create a consistent wall system behind stucco and lap siding. The 1mm spacer incorporated in the HydroGap SA house wrap creates a drainage space to quickly remove water in the walls.

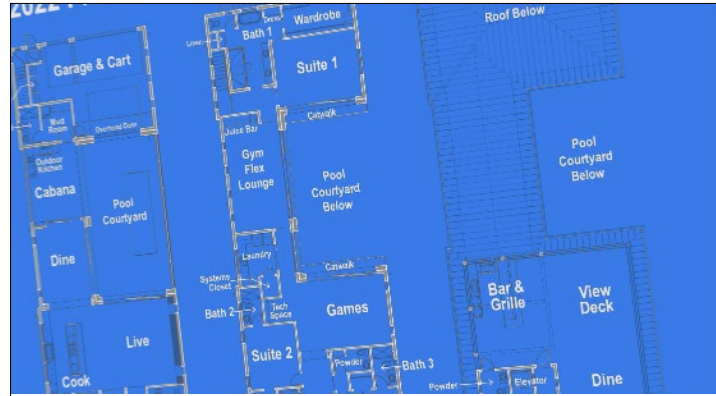
**Flexible tech for today and tomorrow** – Eaton's Wi-Fi smart device are integrated seamlessly throughout the home and is set up easily within the Amazon Alexa app. You can pick and choose locations or easily create a whole home system giving you the flexibility to create a customized system that works for you. Crestron's leading edge automation systems connect the home with their more approachable plug-and-play system installed throughout TNAH. Selected to show the power and potential of the more affordable, scalable system, it is fully wired for future upgrades and advancements in technology.

**Healthy walls** – With concerns for health on everyone's minds, products like Sherwin-Williams Living Well® paint collection create "living walls" with a color palette that not only promotes well-being but actually improves air quality. The Tambour doors by TruStile Doors have a unique contemporary look but they are also green. Envy Homes opted for the No-Added Formaldehyde MDF doors at The New American Home to continue selecting materials that promote green building.

Since its inception in 1984, the home has the distinction of being both a show home, a model home and a for-sale product, balancing architectural freedom and a project's bottom line. These unique concepts above along with incorporating green building practices, sustainability, technology, energy efficiency and lifestyle trends show why The New American Home is continuously recognized among the nation's most prestigious home exhibits and is one of NAHB's most successful and visible programs.

**Clean air system** - Broan-NuTone's Overture™ fully automated air quality system features sensors and smart plugs throughout the home, detecting changes in CO2 and other air quality measures and automatically activating fan-driven filtration for cleaner, contaminant-free air.

# VIDEOS OF THE BUILD



THE NEW AMERICAN HOME 2022 - PHASE 1



THE NEW AMERICAN HOME 2022 - PHASE 2



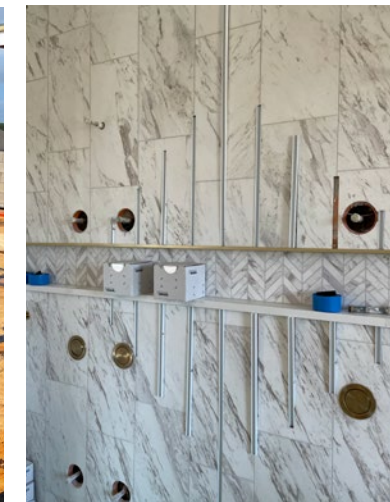
THE NEW AMERICAN HOME 2022 - PHASE 3



THE NEW AMERICAN HOME 2022 - PHASE 4



THE NEW AMERICAN HOME 2022 - FINAL PHASE



# PROBUILDER

PROFESSIONAL BUILDER

THE OFFICIAL MEDIA PARTNER OF NAHB

## WOULD LIKE TO THANK THEIR PARTNERS

### PLATINUM



### GOLD



### SILVER



### BRONZE



## INSIDE LIVING AREA



### SIGNATURE KITCHEN SUITE

SKSCF2401P - 24" INTEGRATED FREEZER COLUMN

Designed to provide one of the largest capacity in the industry, the 24-inch Integrated Column Freezer features 13.9 cubic feet of storage capacity. Also available in 30- and 18-inch configurations to fit builders' exact project needs, the column freezer is ready to pair with any number of Signature Kitchen Suite refrigerator, freezer or wine columns. Every integrated column allows for flush installation, along with easy field-reversible doors.



### SIGNATURE KITCHEN SUITE

SKSCR3001P - 30" INTEGRATED REFRIGERATOR COLUMN

With one of the largest capacity in its class, the 30-inch Column Refrigerator offers 18.0 cubic feet of storage – enough room for a commercial sheet baking sheet with the door closed. Also offered in 24 inches, it pairs easily with any number of refrigerator, freezer, or wine columns. Recognized with a 2018 Red Design Award, the exclusive Lift and Go drawers make this one of the most versatile interior configurations in the industry. Fully adjustable door bins can be moved in any increment, while the convenient movable snack drawer adjusts up and down to accommodate platters and pizza boxes.



### SIGNATURE KITCHEN SUITE

SKSCV3002S - 30" COMBINATION WALL OVEN WITH SPEED COOK AND STEAM-COMBI

The ideal complement to Signature Kitchen Suite's rangetops, the 30-inch Combination Wall Oven with Speed Cook and Steam-Combi offers the flexibility of a steam-assist convection oven with the convenience of a speed oven. This ultimate chef's tool provides the benefits of sous vide cooking with the large capacity of an oven. The speed oven cooks meals two to three times faster by combining advanced halogen lighting, carbon fiber and convection heating, and skipping preheating thanks to infrared technology.



### SIGNATURE KITCHEN SUITE

SKSRT480SIS - 48" GAS RANGETOP WITH SOUS-VIDE AND INDUCTION

Much like its full-sized range cousin, the 48-inch Pro Rangetop is the versatile workhorse of the industry. It's the only pro rangetop on the market to include built-in sous vide, four gas burners, as well as two-zone induction - a first-to-market thanks to utilizing 240 volts as opposed to 120 volts. A 2020 winner of both the TWICE VIP Award and Connected Design Award, this rangetop gives provides everything needed to prepare restaurant-quality meals with less space.

LUXURY BUILT-IN KITCHEN APPLIANCES



### WELLBORN CABINET, INC.

Pot and Pan Base Pullout - Premier

This pot and pan base cabinet pullout allows for easy organization of large items. Gone are the days of needing to adjust shelves to reach hidden items. With its solid wood and dovetail construction this pot and pan pullout moves as one unit and brings items to you.



### WELLBORN CABINET, INC.

Touch to Open - Aspire

Touch to Open, Touch to Close. Our automated door system allows for easy opening and closing of large cabinet doors. The vertical path a Touch to Open, Touch to Close cabinet door takes offers a reduced footprint, which works well in smaller spaces. A bottom-corner sensor closes the cabinet door.



### WELLBORN CABINET, INC.

Drawer Knife Holder - Premier and Estate

Knives might be one of the hardest things to organize in your kitchen. Not only do they come tons of different shapes and sizes, but they can be dangerous if they aren't stored carefully. No matter the size of your kitchen (or your knife collection), you'll find a solution at Wellborn Cabinet that fits.

WHOLE HOME CABINETRY

# INSIDE LIVING AREA

CIRCUIT PROTECTION AND WIRING DEVICES



**EATON**  
Wi-Fi Smart Devices - WFD30, WACD, WFSW15, WFTRCR15

Eaton's broad selection of Wi-Fi smart devices offer reliability with unbeatable ease of setup. The smart switches, receptacles and dimmers quickly and easily sets up with the Amazon Alexa App—no hubs or controllers are necessary. You can also add voice-control using an Amazon Alexa device.

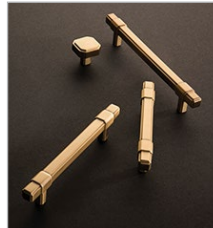


**EATON**  
Wi-Fi Smart Voice Dimmer - WAVD30

With Eaton's Wi-Fi smart voice dimmer with Alexa built-in, users can simply control lights, play music, listen to the news and make announcements.



HARDWARE



**BELWITH KEELER DECOR SOLUTIONS**  
Monroe Collection - Kitchen & Butler's Pantry

The Monroe collection captures the essence of Marilyn Monroe by suggesting classic and timeless beauty with a little bit of glamour and curiosity.



COUNTERTOPS



**LX HAUSYS AMERICA, INC.**  
Carbo - Viatera/Masterpiece - Kitchen F11, Kitchen Backsplash, Butler's Pantry F11

Carbo's Brushed Finish black backdrop with light gray veining is at once bold and beautiful. Viatera Quartz Surfaces contain up to 93% natural quartz, offering advanced durability and higher tensile strength than natural stone products, which typically contain between 20% to 60% quartz. As a non-porous product, harmful bacteria or mold cannot penetrate its surface. It is resistant to everyday stains, chemicals and heat, ensuring its long-lasting beauty. Carbo comes in 2 cm and 3 cm thickness and is available in a Jumbo II size slab.

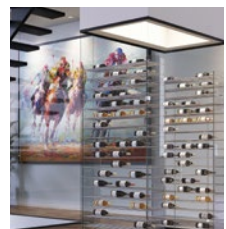


WINE STORAGE



**VINTAGEVIEW**  
W Series Wine Rack Frame System - W Series Luxe

The defining wine rack of the modern wine cellar, the W Series puts the label of the wine bottles on display in stunning fashion for residential and commercial displays, small to large (and The New American Home 2022). Customizable by mixing standard height, bottle depths, and finishes (5, include premium Luxe options), the W Series continues as the best wine rack in the world for top design and construction firms around the world. Includes a companion framing system for floor-to-ceiling mounting up to 12'.



**VINTAGEVIEW**  
Evolution Wine Tower - Evolution

The product for those seeking a near invisible visual footprint, the Evolution Wine Tower offers beautiful minimalism with a combination of premium acrylic and steel that can hold both 750ml or 1.5L wine bottles in the same row. The Wine Tower not only looks pretty but is an easy-to-work with freestanding unit that can expand to the side with Extension Units that share a wall.

# INSIDE LIVING AREA



FLOORING



**ARMSTRONG FLOORING**  
Empower - A6536 - 1st Floor, 2nd Floor, & Rear Stairs

Empower™ Reinforced Mineral Rigid Core outperforms traditional rigid core with its premium visuals and best-in-class protection that provide builders with the look of hardwood without limits. Plus, exclusive Diamond 10® Technology provides ultimate stain-proof protection. Finally, no acclimation is required meaning it installs fast and builders can close home faster.

DOORS



**TRUSTILE DOORS**  
Tambour Series

All TruStile doors are made to order to your exact specifications with the highest quality materials. Our flexible manufacturing process makes it easy to add design options and innovative applications. Our team is dedicated to craftsmanship, creating tools to make designing doors easy, and providing excellent customer service every step of the way. Once you see the difference well-designed doors make in a home, you'll never look at them the same away again.



INTERIOR AND EXTERIOR PAINT



**SHERWIN-WILLIAMS**  
SuperPaint® Interior Acrylic with Sanitizing Technology

The exceptionally durable latex paint offers builders an additional tool to help combat certain harmful bacteria on painted surfaces. SuperPaint with Sanitizing Technology goes on fast and provides ongoing antibacterial action day and night, perfect for high-traffic areas like hallways, bathrooms and kitchens.



**SHERWIN-WILLIAMS**  
SuperPaint® with Air Purifying Technology

SuperPaint® with Air Purifying Technology\* helps improve indoor air quality by reducing VOC levels from potential sources like carpet, cabinets and fabrics, helping rooms stay fresh for longer periods of time. The innovative technology transforms airborne VOCs into water molecules and harmless inert gas while also deconstructing carbon molecules to reduce and neutralize common odors. In addition, the coating's antimicrobial agents inhibit the growth of mold and mildew on the paint surface, therefore preventing bacterial odors.

WINDOWS AND DOORS



**PLY GEM WINDOWS AND DOORS**  
Ply Gem 1570 Casement & Fixed Windows

Our 1570 vinyl casement windows are available in singles, fixed and a wide selection of architectural shapes. Integral twins, triples and quads utilize a common mull for improved water performance and a seamless appearance. The 1570 Casement window features sturdy construction, multi-point locks, smooth operation and various frame, color, grille, and glass options to suit your needs. Recognized in 2021 as a Most Efficient ENERGY STAR® product and having virtually unlimited size options as well as multiple customization features, the 1500 series is the perfect choice for any new construction project.



**PLY GEM WINDOWS AND DOORS**  
Ply Gem 1570 Vinyl Impact Casement

The Ply Gem 1570 Vinyl Impact Casement windows series feature an overall LC 50 rating and are Florida Approved (FL 15317). Available in a variety of on-trend exterior colors, including Black, Dark Bronze and Dove Grey.

# MASTER BEDROOM/BATH

KITCHEN & BATH PLUMBING



## KOHLER CO.

Eir Intelligent Toilet - 77795-0 - Powder Room 1st Floor

Kohler's Eir Intelligent Toilet affords builders the ability to not only match trim to all bathroom fixtures but also provides several innovative features, such as heated seats, touchless close and LED lighting.



## KOHLER CO.

DTV+ Digital Showering System - 99693-P-NA - Master Bathroom

DTV+ with Kohler Konnect utilizes a completely digital thermostatic valve and is compatible with Kohler Konnect for consolidated control.



## KOHLER CO.

Ceric Freestanding Bath - K-25984-0- Master Bathroom

Clean, elegant, and contained, Ceric expresses contemporary warmth and simplicity. This Ceric freestanding bath lets your customer indulge in a deep, immersive soak as they relax against the sloped lumbar support. KOHLER Lithocast® cast resin material allows for geometries with dynamic style and crisp, hand-finished detail rich with character. KOHLER Lithocast® Gloss cast resin is lightweight and easy to clean, with a high-gloss finish.



HOME APPLIANCES



## LG LAUNDRY

WashTower - WSEX200HNA / LG Studio Styler

The sleek single unit LG WashTower™ takes up half the space, giving you room to add a sink, a folding table or whatever you like. But unlike conventional stacked pairs, LG's exclusive Center Control™ panel is perfectly positioned with both washer and dryer controls at just the right height.

Upgrade the laundry with the LG Studio Styler. TrueSteam® Reduces Odors That Cling to Fabrics and Refreshes Between Trips to the Cleaners. Works on More Than 15 Types of Fabrics So You Can Keep Wool, Sequins, & Home Linens Fresh.



STORAGE PRODUCTS



## CLOSETMAID

MasterSuite - Premium Wood Closet & Storage System - Master Closet

MasterSuite® is ClosetMaid's top-of-the-line closet and storage system. Manufactured from a combination of robust, industrial-grade engineered wood with a highly durable melamine finish and solid wood drawers, MasterSuite is built for lasting luxury. Plus, MasterSuite offers a host of attractive design options and convenient accessories to meet the needs of almost any residential application where maximizing storage space is desired. Featuring Finish Color Natural Blonde



COUNTERTOPS



## LX HAUSYS AMERICA, INC.

Calacatta Sol - Viatera/Calacatta - Suite 1 Bath, Suite 1 Shower

Set upon a backdrop of warm twirling hues, Calacatta Sol offers a striking white appearance fused with shades of gold in large-pattern veins, enlightening any room. Viatera Quartz Surfaces contain up to 93% natural quartz, offering advanced durability and higher tensile strength than natural stone products, which typically contain between 20% to 60% quartz. As a non-porous product, harmful bacteria or mold cannot penetrate its surface. It is resistant to everyday stains, chemicals and heat, ensuring its long-lasting beauty. Calacatta Sol comes in 2 cm and 3 cm thickness and is available in a Jumbo II size slab.



# GARAGE & DOG WASH

GARAGE DOORS



## CLOPAY

Canyon Ridge Modern Garage Door - Metal Inlay Design

Statement-making and sophisticated, Clopay Canyon Ridge Modern garage doors combine realistic wood textures with key elements of contemporary architecture: clean, horizontal lines with mid-century appeal, sleek windows and metallic accents. Perfect for coastal environments, the doors are constructed in a durable, low-maintenance faux wood composite material that resists rot and weathering. An energy-efficient, polyurethane foam insulated steel core provides an 18.4 R-value.



America's Favorite Garage Doors®

GARAGE AND GATE OPENER SYSTEMS



## LIFTMASTER

Wall Mount Wi-Fi Garage Door Opener - 8500W

DC Battery Backup Wall Mount Wi-Fi Garage Door Opener. Wall mount design frees up ceiling space in your garage, reduces noise and vibration. Built-in Wi-Fi® allows for smartphone control with the myQ® app. Battery Backup allows you to open/close your door even when the power is out. Includes myQ Remote LED Light featuring 1,500 lumens. Automatic Garage Door Lock deadbolts your door after closing. Amazon Key In-Garage Delivery works with compatible LiftMaster garage door openers to allow Prime members convenient and secure package delivery inside the garage.



POWERED BY myQ



## LIFTMASTER

Secure View™ Smart Opener with Camera - 87504-267

Secure View™ Ultra-Quiet Belt Drive Smart Opener with Camera, LED Corner to Corner Lighting™ and Battery Backup. Built-in camera adds video and 2-way audio communication to the myQ® app. Control, secure and monitor the garage with the myQ app- anytime, from anywhere. 360° light ring uniformly brightens every corner of the garage with 2,000 lumens of long-lasting LED light. Battery backup lets you get in and out when the power is down. Ultra-quiet DC motor and strong belt drive system ensures for comfortable living spaces near the garage. Amazon Key In-Garage Delivery works with compatible LiftMaster garage door openers to allow Prime members convenient and secure package delivery inside the garage.

FLOORING



## ARMSTRONG FLOORING

Versastyle - D4101 - Dog Wash Station

Versastyle engineered stone is the perfect choice over real stone and ceramic with its faster, easier and cleaner to installation meaning less time and labor for builders. Tiles are groutable for a true look and a wide range of styles, including slate, travertine, concrete, and marble are offered.



HARDWARE



## BELWITH KEELER DECOR SOLUTIONS

Verge Collection - Dog Wash

Knurled surfaces and edgy geometry make this a notable pick. Machined precision on unusual shapes brings a sense of avant-garde to any space that welcomes the unusual, or needs to flip the script.



COUNTERTOPS



## LX HAUSYS AMERICA, INC.

Nocturne - Viatera/Musica - Dog Wash

Nocturne, rich with dark tones and creamy strings of light running in staccato, induces the feeling of a night sky filled with shooting stars. Viatera Quartz Surfaces contain up to 93% natural quartz, offering advanced durability and higher tensile strength than natural stone products, which typically contain between 20% to 60% quartz. As a non-porous product, harmful bacteria or mold cannot penetrate its surface. It is resistant to everyday stains, chemicals and heat, ensuring its long-lasting beauty. Nocturne comes in 2 cm and 3 cm thickness and is available in a Jumbo II size slab.





# OUTDOOR LIVING

OUTDOOR KITCHENS



## BROWN JORDAN OUTDOOR KITCHENS

TECNO - Florida™ Room

TECNO is a member of the Brown Jordan Outdoor Kitchens collection. With its distinctive pull, this outdoor kitchen is as beautiful as it is functional. Together, we build the latest trends and innovations in outdoor living for the backyard, rooftop or transition room.



## BROWN JORDAN OUTDOOR KITCHENS

Bead Board Door

Brown Jordan Outdoor Kitchens manufactures an extensive line of stainless steel cabinetry in an array of exclusive, designer colors and door styles creating fully functional, signature outdoor kitchens. Each kitchen consists of semi-custom, modular cabinets designed to accommodate even the most creative kitchen layout, fitting any manufacturer's grill, as well as a multitude of other outdoor kitchen appliances, bars and accessories.

PLUMBING



## KOHLER CO.

KOHLER Tone kitchen faucet - 23765-BL - Lower level outdoor kitchen

With clean lines and a soft teardrop base, the Tone kitchen faucet collection features a fresh take on mid-century modern style. This inviting design, where minimalism meets warmth, makes for a perfect fit in any space. Paired with thoughtful functionality, the Tone collection is a dynamic beauty.



PERGOLA X



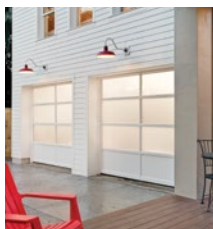
## STRUXURE

Pergola X - Pivot 6

Our system is totally customizable, so it can be designed to fit any space. Our largest single zone is 12' wide by 20' long. We can connect as many zones as needed to cover the desired space. We can also incorporate our beam chases between each zone to provide access for extras like lights, fans, speakers, and heaters to offer a seamless, built-in look. We use CAD files to ensure that we provide builders what they need to design with StruXure. We have partnered with CADdetails to provide an easy-to-access library of our latest drawings and 3D models.



GARAGE DOORS



## CLOPAY

Avante Glass Garage Door - Courtyard

Glass garage doors aren't just for the garage. Builders are getting creative and customizing them in many sizes and finishes to use as patio doors, pool house doors, and even as small pass through windows that can be rolled up for outdoor entertaining when the weather is nice. The Avante's 2-1/8-inch-thick commercial-grade aluminum frame is designed for long-term resilience. Choose from 12 glazing options and several anodized or powder-coat finishes.



## CLOPAY

Canyon Ridge Modern Garage Door - Metal Inlay Design

Statement-making and sophisticated, Clopay Canyon Ridge Modern garage doors combine realistic wood textures with key elements of contemporary architecture: clean, horizontal lines with mid-century appeal, sleek windows and metallic accents. Perfect for coastal environments, the doors are constructed in a durable, low-maintenance faux wood composite material that resists rot and weathering. An energy-efficient, polyurethane foam insulated steel core provides an 18.4 R-value.

# OUTDOOR/INDOOR LIVING

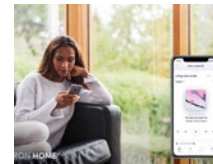
SMART HOME SOLUTIONS



## CRESTRON ELECTRONICS

Crestron Home OS

The Crestron Home Operating System (OS), products and solutions are built from decades of experience in designing home automation technology. Creating solutions that are completely unique to each home, built to last and endure, providing an elegant smart home that delivers comfort, entertainment, security and improves the overall health and wellness of those who live there. Delivering an intuitive and easy to use user experience, an experience that synchronizes seamlessly across any control device, whether a touchscreen, keypad, iPhone, iPad or remote control.



## CRESTRON ELECTRONICS

Crestron Smart Home Control Options

With our extensive collection of intuitive control options, the Crestron smart home experience is always at your command. Between customizable designer keypads, sleek and brilliant touch screens, and ergonomic handheld remotes, you'll find an elegant Crestron control device to suit every space and need in your home. And of course with the Crestron Home user experience you get the same Crestron experience on your mobile devices as well as the Crestron products in your home.

RETRACTABLE SCREENS



## PHANTOM SCREENS

Retractable Solar Shades

Phantom retractable solar shades reduce building heat gain, manage daylight/UV, and help retain climatized air (cool or warm) in covered outdoor spaces. The shades are concealed out-of-sight in subtle housings or ceiling cavities until needed, preserving views and aesthetics. These exterior-mounted solutions are 7X more effective at reducing heat gain than interior shades. Perfect for large windows, glass wall openings and covered outdoor spaces – Phantom retractable shades maximize energy efficiency and homeowner comfort.



## PHANTOM SCREENS

Retractable Clear Vinyl

Phantom retractable clear vinyl helps control temperature, moisture, wind, and UV exposure in covered outdoor spaces for optimum comfort. The vinyl panels are hidden out-of-sight, in subtle housings or ceiling cavities, until needed to preserve views and aesthetics. Homeowners have the option of choosing a dual roller system to add insect screens or solar shades to their outdoor space. Phantom Screens lets your clients use their outdoor spaces comfortably in all seasons.

SOLAR PANELS



## LG SOLAR U.S.A

NeON® Residential Modules - Rooftop

The LG NeON® residential module family provides premium performance that works to maximize light utilization, elevate energy efficiency and enhance reliability no matter the weather. Providing added value for the customer beyond efficiency, these modules feature an enhanced 25-year warranty and aesthetic designs suitable for roofs of all shapes and sizes. Plus, after 25 years all LG NeON® modules are guaranteed to perform at a minimum of 90.1% of initial performance—making it only a matter of which LG NeON® module fits your homeowner best.



## LG SOLAR U.S.A

NeON® R Modules - QAK-A6 - Rooftop

Featuring Back Contact Technology™, the LG NeON® R module does things differently. Its advanced cell structure locates all the module's electrodes on the backside to maximize light utilization, enhance reliability and elevate energy efficiency—especially in the mornings and evenings, when the angle of light is lower. It's also one of the best temperature coefficient options, for better performance on hot and cold days. Plus, with a sleek new design and the ability to accommodate smaller spaces, the LG NeON® R modules can serve more customers and keep them satisfied.

# BEHIND THE WALLS

TANKLESS WATER HEATERS



## RINNAI AMERICA CORPORATION

SENSEI Tankless Water Heater - RU199eP & RUR199eP - Outside Wall

The Rinnai SENSEI Water Heater is a compact water heater that can be installed either inside or outside and provides space savings that add sell-able square footage to the home and endless Hot Water creating a Healthier Way of Living!



## RINNAI AMERICA CORPORATION

Hydronic Air Handler - AH083CP/AH083P - Inside in Mechanical Room, Closet or Attic Space

Rinnai's Hydronic Air Handler delivers comfortable central home heating while being paired with either our Tankless Water Heaters or Boilers. This system provides both your Domestic Hot Water and Home Heating using one gas line, one vent for both pieces of equipment.



## RINNAI AMERICA CORPORATION

Rinnai I-Series Boilers - i090CN - Inside Mechanical Room

Make a great impression with the I-Series Condensing Gas Boiler — delivering iconic indoor heating solutions. Using the perfect combination of proven technology and reliability, these boilers are designed with the homeowner in mind. Unlike most combi boilers, the I-SERIES contains a proportional valve which allows for simultaneous delivery of domestic hot water and central heating with less interruption of the heating flow.



CIRCUIT PROTECTION AND WIRING DEVICES



## EATON

Loadcenter - BRP08B200RF

Eaton plug on neutral loadcenters and breakers offer enhanced safety, easier installation and a clean, contemporary look while featuring innovative platforms and industry-leading diagnostic technology.



## EATON

Emergency Disconnect - DG222NRB

Focused heavily on safety, Eaton's switching device product line brings state-of-the-art designs that can even be customized to fit your unique needs.



## EATON

Air Conditioning Disconnects (ACD) - ACD60R

Eaton air conditioning disconnects (ACD) simplify installation and maintenance of air conditioning units. They provide multiple mounting options and enclosures with ample wiring space.



## EATON

Green Motion Electrical Vehicle (EV) Charging Solutions - GMEV32BR-DC, GMEV32BR-WB

Recharge your electric vehicle faster and smarter with Eaton's Green Motion EV charging smart breaker. This innovation in EV charging allows maximum flexibility with multiple installation options.



# BEHIND THE WALLS

SUB-FLOORING / TRIM & SIDING / AIR & WATER BARRIER



## LP BUILDING SOLUTIONS

LP Legacy® Premium Sub-Flooring

Made with Gorilla Glue Technology®, LP Legacy® Premium Sub-Flooring offers superior moisture resistance and strength. These OSB panels feature a Covered Until it's Covered® No Sand Warranty and Limited Lifetime Warranty that lasts as long as the home. With exceptional fastener holding protection against edge swell, this sub-flooring is built to deliver performance that you can stake your reputation on.



## LP BUILDING SOLUTIONS

LP® SmartSide® Lap Siding

LP® SmartSide® Lap Siding is available in cedar and smooth textures as well as in 16 prefinished colors or a primed option. This lightweight product is available in 16' lengths leading to fewer seams in addition to faster installation. Great for new builds or remodels, LP SmartSide Lap Siding is proven to help you finish more jobs in less time.



## LP BUILDING SOLUTIONS

LP WeatherLogic® Air & Water Barrier

LP WeatherLogic® Air & Water Barrier is a Structural I rated wall and roof sheathing panel. It offers structural defense and protects against air and water infiltration. The panels provide permeability and allow moisture to dry, an innovation that also provides greater indoor comfort for years to come.



REFLECTIVE INSULATION



## FI-FOIL COMPANY, INC.

Fi-Foil Flex Foam - F-FLEXFOAM48250RWP - Stand alone as part of Wall System, Ideal for use with Masonry Block Construction, Can be Used AS High-Performance Building Wrap - Stand alone as part of Wall System, Ideal for use with Masonry Block Construction, Can be Used AS High-Performance Building Wrap

Our Flex Foam is a continuous insulation solution that reduces radiant heat transfer for superior performance and a better alternative to traditional foam board, especially in hot-humid climates. Perforated to allow vapor transmission and coated for long term performance and corrosion resistance, Flex Foam's Low-e aluminum reinforced facing reduces up to 95% of radiant heat transfer.



## FI-FOIL COMPANY, INC.

Fi-Foil M-Shield - F-MShield16500P - Exterior Walls Surrounding Sliding Doors & Glass Window at Main Staircase

Fi-Foil M-Shield is an insulation solution for mold & mildew sensitive projects. An Industry leading paperless masonry wall insulation, M-Shield contains no cellulose eliminating the food source for mold growth. Learn why more architects and builders are using M-Shield to improve air quality and performance. Visit [fifoil.com/mshield](http://fifoil.com/mshield).



ROOF AND WALL PROTECTION



## BENJAMIN OBDYKE

HydroGap® SA - Exterior wall assembly

HydroGap® SA is the first and only self-adhered WRB to incorporate a true drainage space. The 1mm spacer technology combined with a fully-continuous breathable acrylic adhesive provides an unmatched air and moisture barrier.



## BENJAMIN OBDYKE

Cedar Breather® Roofing Underlayment - Exterior Roof Assembly

Cedar Breather® protects the beauty and life of wood roofing by providing a space for continuous airflow between the solid roof deck and shingles or shakes.



## BENJAMIN OBDYKE

HydroFlash® LA - Exterior wall assembly

HydroFlash® LA is designed for exterior flashing of rough openings, transitions, and seams as part of a high performing air and water management system. Liquid Applied flashing is appropriate for the filling of imperfections, penetrations, or sealing of geometrically challenging areas.



# BEHIND THE WALLS

HOME COMFORT SYSTEMS



## LG ELECTRONICS U.S.A., INC.

LG\_Multi V™ S Heat Pump - ARUN060GSS4 & ARUN048GSS4 ARUN048GSS4 - Outside of building

The LG Multi V™ S Heat Pump and Heat Recovery operate efficiently and quietly, fostering user comfort, while reducing installation and operating costs. Ranging from a 2- to 5-ton Heat Pump and 3- to 5-ton Heat Recovery, the Multi V S provides a compact footprint, and models with LGRED Technology deliver continuous heat down to -13°F, so they can be used residentially, as well as in a wide range of commercial applications, offering overall increased flexibility and efficiency for property owners.



## LG ELECTRONICS U.S.A., INC.

Multi V™ Mid Static Ducted - ARUN048GSS4 - Multiple areas, above the ceiling, furr downs, discrete mechanical closets

LG Mid Static horizontal indoor units provide a solution for residential and light commercial applications with minimal ceiling clearance, affording contractors flexible installation options for a variety of projects. Inverter technology allows the system to closely match compressor speed with output demand, which translates to higher energy efficiency.



## LG ELECTRONICS U.S.A., INC.

Multi V™ Standard Wall Mounted Unit - ARNU123SJA - Multiple areas, wall

LG Wall Mounted indoor units provide a duct-free solution driven by inverter technology that enhances comfort and efficiency. Wall indoor units are a great option where ducting is hard to route, and with minimal clearance around the unit, they provide flexible installation options, while producing low sound and air louver adjustability.

PROPANE APPLIANCES



## PROPANE EDUCATION AND RESEARCH COUNCIL

Propane Power Generation

Micro combined heat and power (micro-CHP) systems push past the efficiency boundaries of traditional heating or water-heating systems. These cogeneration systems produce both heat and power simultaneously, allowing them to surpass the energy savings of even the most efficient boilers.



## PROPANE EDUCATION AND RESEARCH COUNCIL

Propane Home Appliances

Propane cooking equipment provides convenience, sharp design, and excellent performance in any kitchen. Propane also offers commercial-grade ranges, indoor grill and cooktops, in-wall double ovens, and other gas cooking applications in luxurious custom kitchens.

NATURAL GAS AND PROPANE



## OMEGA FLEX INC.

CounterStrike CSST - FGP-CS-size

There are no additional bonding requirements for CounterStrike® CSST imposed by the manufacture's installation instructions. Lays straighter and pulls easier, dramatically decreasing installation times. Unlike competitive brands, CounterStrike® is non-annealed making it more crush resistant, and easier to cut.



## OMEGA FLEX INC.

Natural Gas and Propane Installations

CounterStrike® CSST introduced to the market in 2004 is used for natural gas and propane installations. Over 150 million feet of CounterStrike® has been installed in residential as well as commercial and industrial buildings.

# THE NEW AMERICAN HOME 2023





Learn more about our partners, see construction photos, interviews with the builder and more at [TNAH.com](https://www.TNAH.com)